

Product Release Information: Schlage Utility Software 6.5.3

Product	Schlage Utility Software (SUS)
Version Number	Version: 6.5.3
Engineering Release Date	December 28, 2017
Production Release Date	January 2017
Customer Support	For more information or support, visit our website .

Attention:

This document contains the release notes for Schlage Utility Software (SUS) version 6.5.3 which includes updates from the previous release 6.4.2 on July 2016.

The following sections describe this release in detail and will provide important information that supplements the SUS User Guide.

Installation and Upgrade Notes:

Installation

Follow the “SUS Update Guide – Appendix A” section of the Schlage Utility Software, user guide for installation and upgrade details.

You will find the latest User Guide [here](#) and at the Schlage Support Site [here](#) under Electronic Locks -> AD Series-> Schlage Utility Software -> Installation Manuals -> Schlage Utility Software User Guide.

Who should upgrade?

Allegion recommends keeping all devices up to date with the latest firmware and software. We strive to provide the best products and service for our customers.

Installing the latest firmware and software releases will allow customer(s) to get the most from their devices and allow for better overall functionality and product support.

Specifically, all customers interested in the following *Feature Updates* and *Recent Changes* should update their devices:

Feature Updates:

- **AD-250:** Support added for “One Time User” credentials with AD.A.110 (Firmware Version - 2.48.2)
 - A new field has been added to the SUS Lock Properties screen labeled “Max One Time Users: 500”



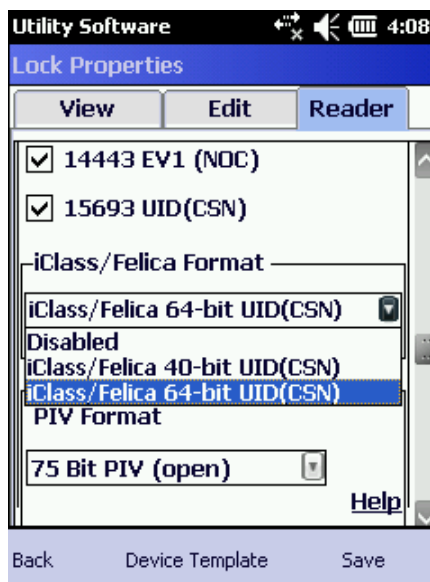
- In the event that the Door data file has more than 500 One Time User's enrolled, the following SUS error message will be displayed:
“Maximum number of 500 One Time users exceeded. Please correct the Door data file and try again”

NOTE: AD.A.110 (Firmware Version – 2.48.2) is required for “One Time User” credentials to be programmed. If a Doorfile containing “One Time User” Credentials is programmed into a device with firmware prior to AD.A.110, SUS will ignore the “One Time User” Credentials and they will **NOT** be programmed into the device.



- **AD-Series:**

- SUS support has been added for “Felica” card type for MTK2 readers
 - iClass/Felica Formats can be set to any of three settings:
 1. Disabled – iClass/Felica Formats are disabled
 2. iClass/Felica 40-bit UID(CSN) – 40-bit iClass/Felica Format enabled
 3. iClass/Felica 64-bit UID(CSN) – 64-bit iClass/Felica Format enabled



Dropdown Menu Includes Felica Card Types

- SUS support for “KantechIO Prox” and “iClass Expansion”



Selection Box for Schlage(HID/KantechIO)

- **BE-367:**
 - SUS has been updated to address BM-170 connection issues
 - This update requires the new Gray Serial Cable and Pidion OS update



- For information on updating the BM-170 OS, see the attached pdf



Recent Changes:

- When connected to a PIM400 and viewing the battery level of a paired device, a device with in critical battery mode is now properly reported as critical battery instead of “OK”
- Messages and pop ups have been updated with new translations into Spanish, French, and Portuguese
- Updated the “Device Template” processes to correctly identify and document the PIM-VBB device.
 - Previously identified with old name: PIM-SBB
- Updated the SUS to follow RSI protocol specification for First, Delay and Retry settings in a PIM400. The SUS maximum settings have been updated from 1000, 1000 and 15 to 1500, 1500 and 15 which is the same maximums allowed by RSI protocol

Version Compatibility:

For the best Customer Experience and to take advantage of the latest SUS updates and recent changes, please ensure your AD and CO Series products are using the following firmware.

This SUS update 6.5.3 is compatible with the following devices and firmware:

- **All AD devices:** With firmware package AD.A.110 – released in Dec. 2017.

Devices	Firmware Revision
AD-200	2.48.1
AD-250	2.48.2
AD-300	2.48.3
AD-400	2.48.2
KP-PR-SM-MT	2.47.3
KP-PR-SM-MT2	2.2.4
MG	2.44.0
PIB300-2D	2.19.1
PIM400-485-RSI	2.28.2
PIM400-485-VBB	2.28.2
PIM400-TD2	2.25.1
WPR400	2.28.2
WRI400	2.8.1
CT5000	2.7.0

- **All CO devices:** With firmware package CO.A.20 – released in January 2017
 - Programmed with firmware package CO.A.20 (or higher)

DEVICE	Firmware Revision
CO-200 KP	2.13.1
CO-200 PR	2.13.2
CO-200 MAG	2.10.2
CO-220 KP	2.13.1
CO-220 PR	2.13.2
CO-220 MAG	2.10.2
CO-250	2.13.1

- **All serial communication legacy products** (CM, CL, CT1000, etc.)