

ENGAGE™

Cloud-Based Web & Mobile Applications



Overview

ENGAGE™ cloud-based web and mobile applications simplify the ability to connect people, openings and access management to deliver cost effective intelligence and efficiency to any facility.

With the ENGAGE cloud-based web and mobile apps, it's easy to configure settings, manage users, assign access privileges and view audits and alerts from anywhere. Updates to configuration and access privileges can be sent at the device with the ENGAGE mobile app.

Daily schedule management of an opening available with Von Duprin® remote undocking (RU) using ENGAGE software via Wi-Fi. This solution is available for scheduled lock-up events only, see the [RU/RM data sheet](#) for complete details.

The ENGAGE web app has the capability to issue and manage the Schlage Mobile Bluetooth® credential - giving users the security and convenience of using their mobile device to gain access to ENGAGE managed openings. Other capabilities of ENGAGE include audit filtering, lock schedules, user schedules, and holidays. Please see page 4 for a complete listing of capabilities.

The ENGAGE mobile app is used to commission and connect Schlage Control®, NDE, LE, MTB, RC and Von Duprin RU/RM devices to physical access control software (PACS) systems. Please visit us.allegion.com/alliances for specific support and capabilities by provider.

Features & Benefits²

- Convenient - manage from anywhere
- Configure lock and device settings
- Add new users and enroll credentials
- Assign credential type including master, normal, toggle, freeze, pass through, blocked, and lockdown
- Manage users and assign access privileges In addition, the web and mobile apps have these unique capabilities:
- **ENGAGE™ web app**
 - Create and assign lock/device schedules, user schedules and holidays
 - View and export audits
 - Schedule lock/device firmware updates¹
 - Issue Schlage Mobile Bluetooth® Credentials
- **ENGAGE™ mobile app**
 - Add new locks or devices
 - Assign lock/device schedules, user schedules and holidays
 - View audits
 - Send updates wirelessly at the lock or device

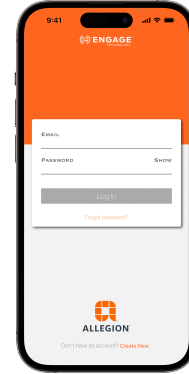
1. Applies to NDE, LE and CTE with built-in Wi-Fi
 2. System capabilities specific to ENGAGE web and mobile apps for basic access control. Please refer to the Von Duprin RU/RM data sheet for specific details about remote undocking solution.

CYBERSECURITY
 Learn about Allegion's commitment

Use the Engage Mobile App to Commission Devices & Connect Them to Leading PACS Systems

The ENGAGE mobile app is used to commission and connect Schlage Control®, NDE, LE, MTB, RC and Von Duprin RU/RM devices to industry leading physical access control software (PACS) systems.

Please visit us.allegion.com/alliances for specific feature support and capabilities by provider. The details on pages 3 and 4 of this data sheet are not applicable to PACS managed solutions.



ENGAGE Cloud-Based Web & Mobile Applications

The ENGAGE cloud-based web and mobile applications deliver simple and convenient site set-up as well as the ability to manage users, assign access privileges and view audits and alerts from anywhere.

Technology Recommendations

iOS, Android™, and web browser specifications are available on the ENGAGE web and mobile apps page on commercial.schlage.com.



Electronic Credentials

Eliminate the time and costs associated with managing keys or re-keying locks by upgrading to electronic credentials. Provide a unique credential to authorized users that can be:

- Tracked for usage
- Added and revoked remotely
- Assigned to be valid during specific days and times
- Deleted and replaced if lost or stolen – without having to re-key the lock

Supported Credentials

Mobile credentials (BLE 2.4 GHz):

- Schlage® Mobile Bluetooth® credential

Schlage MIFARE credentials (13.56 MHz):

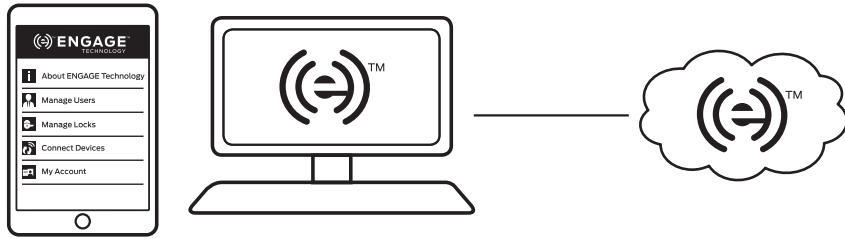
- Schlage MIFARE Classic®
- Schlage MIFARE Plus®
- Schlage MIFARE® DESFire®

Smart credentials (13.56 MHz) – card serial number only:

- HID iClass® and iClass SE®
- MIFARE Classic®
- MIFARE Plus®
- MIFARE® DESFire®

Proximity credentials (125 kHz):

- Schlage®
- AWID®
- GE/CASI®
- HID®



Manage Access

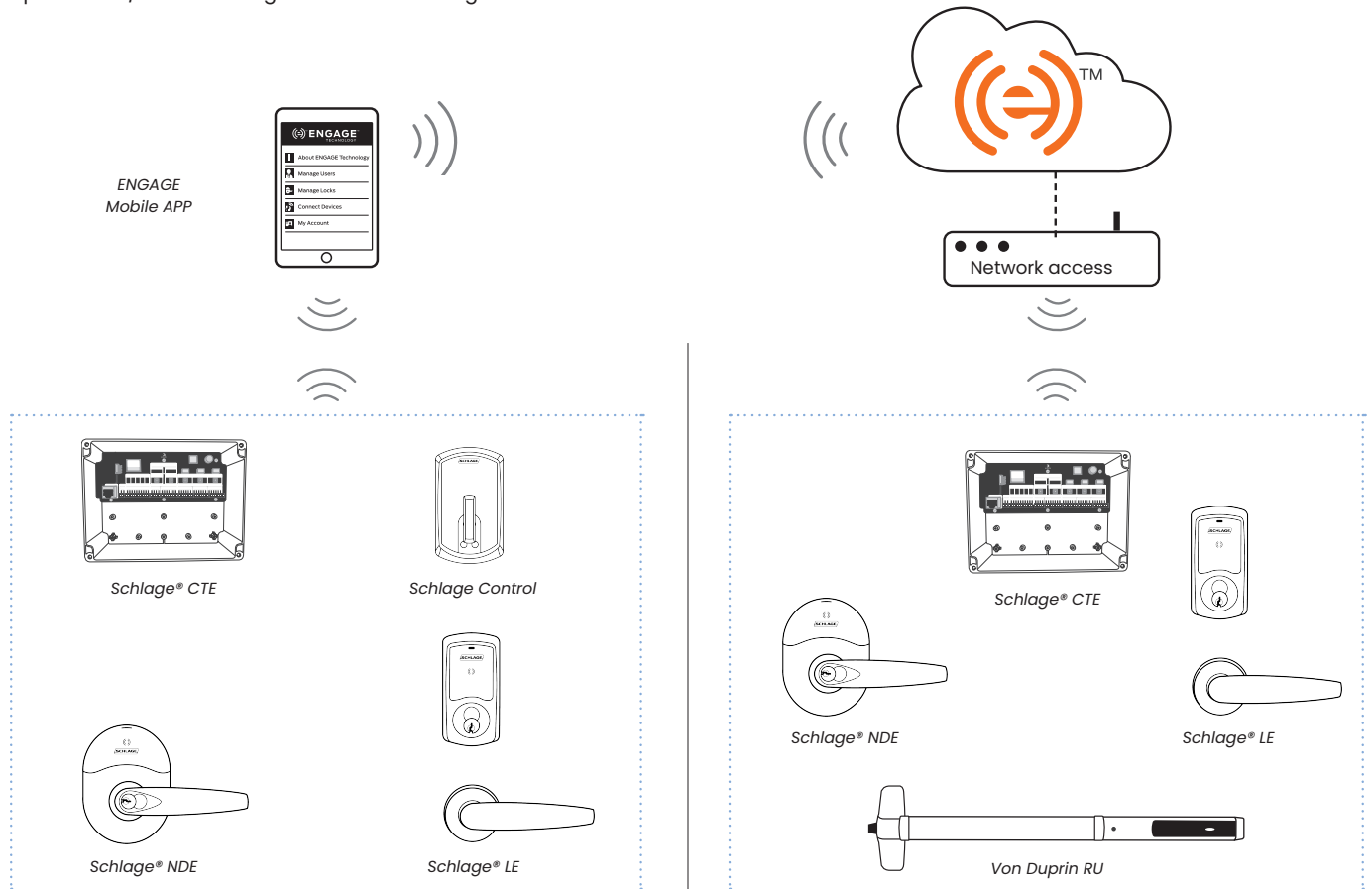
Manage your site from anywhere with ENGAGE cloud-based web and mobile applications.

- Configure lock/device settings
- Add new users and enroll credentials
- Manage users and assign access privileges
- Set lock/device schedules, holidays, user schedules
- View and export audits and alerts
- Invite others to assist with administration

Update Locks & Devices

Send updates wirelessly at the lock with the ENGAGE mobile application on a Bluetooth® enabled smart phone, tablet, or leverage the existing Wi-Fi® network for automatic daily updates.

- Update access rights
- Update lock/device settings
- Update firmware
- Perform diagnostics



Immediate updates

Send updates at the lock/device, anytime, with the ENGAGE mobile app. Available on Schlage Control smart locks, NDE and LE wireless locks, and CTE.

Automatic daily updates¹

Connect/devices to the Wi-Fi network for automatic daily updates. Available on Schlage NDE and LE wireless locks, and CTE as well as Von Duprin RU.

1. Refer to the Von Duprin RU/RM data sheet for specific details and support about remote undocking solution.



System Capabilities

	Wireless offline security solution with ENGAGE technology			CTE single door controller with MTB reader
	Schlage NDE cylindrical	Schlage LE mortise	Schlage Control smart deadbolt / interconnected	
System features				
Maximum number of locks/devices	NDE, LE and CTE = Up to 100; Control = Up to 500			
Maximum number of users	Up to 5,000 ¹			
Maximum number of audits	Up to 100,000 ²			
Maximum number of lock/device schedules	Up to 16 ³			
Maximum number of holidays	Up to 32 ³			
Maximum number of user schedules	Up to 16			
Update capability				
Bluetooth* ⁴	Yes	Yes	Yes	Yes
Wi-Fi ⁵	Yes	Yes	No	Yes
Lock functions				
Storeroom	Yes	Yes	N/A	N/A
Office	Yes ⁸	Yes	N/A	N/A
Privacy	Yes ⁸	Yes	N/A	N/A
Apartment	Yes ⁸	Yes	Yes	N/A
Status monitors				
Interior cover tamper	Yes	Yes	Yes	Yes ⁶
Request to exit	Yes	Yes	N/A	Yes
Deadbolt position status	N/A	Yes	No	N/A
Interior pushbutton status	N/A	Yes	N/A	N/A
Forced door	Yes	Yes	N/A	Yes
Propped door	Yes	Yes	N/A	Yes
Magnetic tamper	Yes	Yes	N/A	N/A
Battery status (normal, low, critical)	Yes	Yes	Yes	N/A
Battery voltage level	Yes	Yes	Yes	N/A
Credentials				
2.4 GHz Bluetooth Mobile (Schlage)	Yes ⁷	Yes ⁷	Yes ⁷	Yes ⁷
13.56 MHz Smart	Yes	Yes	Yes	Yes
125 kHz Prox	Yes	Yes	No	Yes
Credential attributes				
Normal credential	Yes	Yes	Yes	Yes
Toggle credential	Yes	Yes	N/A	Yes
Pass through credential	Yes	Yes	Yes	Yes
Visitor/one-time use credential	Yes	Yes	N/A	Yes
Freeze credential	Yes	Yes	Yes	Yes
Block credential	Yes	Yes	Yes	Yes

1. Maximum number of users for a site. NDE and LE wireless locks and CTE are capable of storing up to 5,000 users. Control is capable of storing up to 500 users.
2. Audit capacity per lock for a site. NDE and LE wireless locks and CTE are capable of storing up to 2,000 audits. Control is capable of storing a minimum of 1,000 audits.
3. Applies to NDE and LE wireless locks and CTE only.
4. Requires ENGAGE mobile application.
5. Requires available Wi-Fi network with internet connection. Update will occur within 24 hours as scheduled by ENGAGE host software.
6. Ability to monitor tamper on reader cover.
7. Requires use of mobile enabled models of locks and devices.

Allegion, the Allegion logo, ENGAGE, the ENGAGE logo, Schlage and the Schlage logo are trademarks of Allegion plc, its subsidiaries and/or affiliates in the United States and other countries. All other trademarks are the property of their respective owners.

