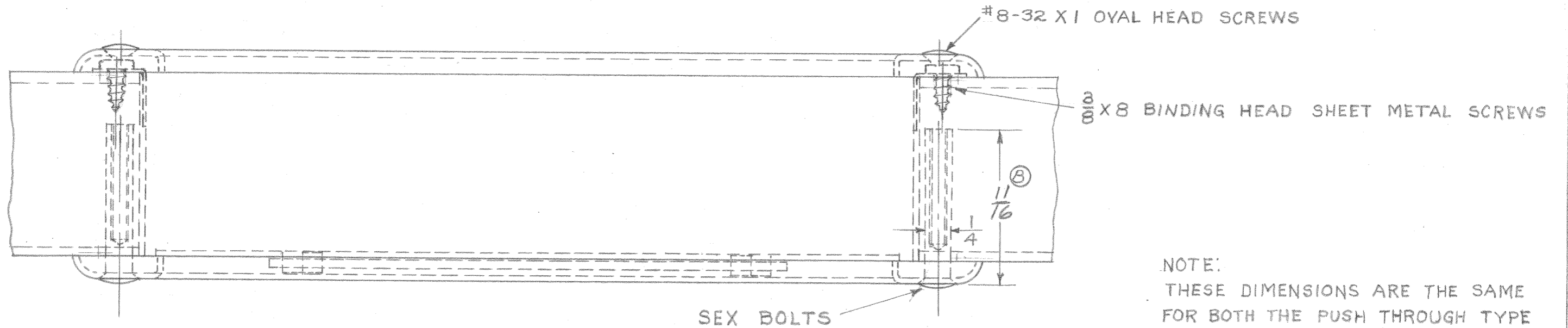


DO NOT SCALE

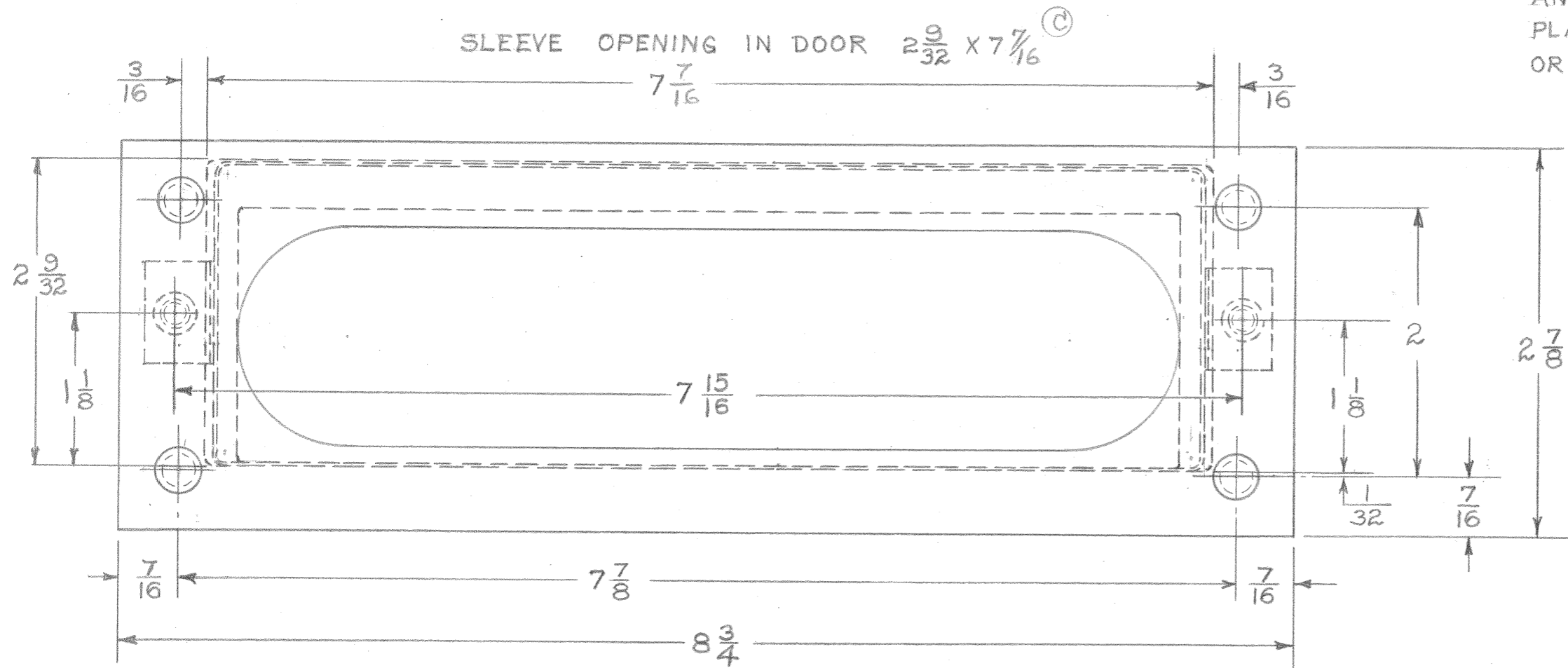
TEMPLATE DRAWING

DWG. NO. 262C

STANDARD FRONT AND BACK PLATES FURNISHED WITH $\frac{3}{4}$ " X #8 SHEET METAL SCREWS
 #8-32 MACHINE SCREWS FURNISHED UPON REQUEST TO BE USED WITH STANDARD FRONT AND BACK PLATES.
 SEX BOLTS FURNISHED UPON REQUEST AT ADDITIONAL COST.



NOTE:
 THESE DIMENSIONS ARE THE SAME FOR BOTH THE PUSH THROUGH TYPE AND WEATHER-TITE LETTER BOX PLATES USING EITHER THE STANDARD OR COVERED BACK PLATES



626, 627, 628 & 629 LETTER BOX PLATES WITH 600 SLEEVE		
LETTER	CHANGE	DATE
A	600 SLEEVE ADDED	6/1/56
B	$\frac{11}{16}$ WAS $1\frac{1}{2}$	10/5/71
C	$7\frac{7}{16}$ WAS $7\frac{1}{2}$ JP	6/28/78
F.C.B. 11-16-49 FULL SIZE		
IVES DIVISION LEIGH PRODUCTS, INC. P. O. BOX 1887, NEW HAVEN, CONN. 06508		

STB