

FLUSH KNOB PULL

FOR USE ON SLIDING DOORS, CABINET AND UTILITY DOORS. PROVIDES EASY OPENING.

INSTALLATION INSTRUCTIONS

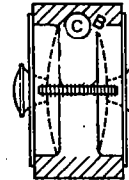
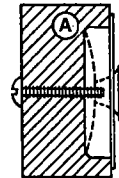
TOOLS REQUIRED: Drill, 3/16" drill bit, 2 1/8" spade bit, 2 1/4" hole saw, small chisel and regular screwdriver.

INSTALLATION (A) —

1. Position and mark approximately 40" from bottom of door and 2" from door edge. Bore hole 2 1/4" wide x 1/2" deep (with 2 1/4" spade bit or 2 1/4" hole saw & chisel).
2. Drill center hole completely through door with 3/16" drill bit. Insert pull and secure from back.

INSTALLATION (B) —

1. Position and mark approximately 40" from bottom of door and 2" from door edge. Bore hole 2 1/4" wide completely through door (with 2 1/4" hole saw).
2. Cap both ends with pulls securing with double ended screw.



MAINTENANCE INSTRUCTIONS

H.B. Ives Solid Brass products have a clear, protective lacquer coating which helps prevent discoloration. Do not use abrasive waxes or cleaners.

ASK FOR OTHER FINE DECORATIVE HARDWARE BY H.B. IVES



WINDOW
LOCKS



DOOR
STOPS



COAT &
HAT HOOKS



DOOR
BOLTS