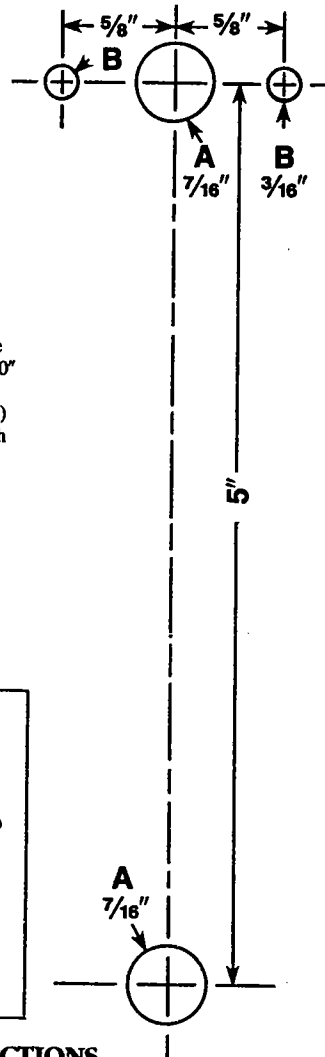


**DOOR KNOCKER**  
FOR USE ON EXTERIOR OR  
INTERIOR DOORS OF HOMES,  
CONDOMINIUMS, APARTMENTS  
AND OFFICES.

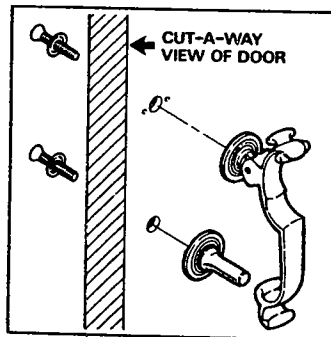


### INSTALLATION INSTRUCTIONS

**TOOLS REQUIRED:** Drill,  $\frac{3}{16}$ " ,  $\frac{7}{16}$ " drill bits, screwdriver, awl or pencil.

1. Position and tape template to outside of door, centered from side to side 60" above threshold.
2. Mark hole centers and drill holes (A) with  $\frac{7}{16}$ " drill bit completely through door.
3. Drill holes (B) with  $\frac{3}{16}$ " drill bit  $\frac{1}{4}$ " deep on outside of door only.
4. Mount door knocker and strike with screws and cover washers.

**NOTE:** Check product against template before installing.



### MAINTENANCE INSTRUCTIONS

H.B. Ives Solid Brass products have a clear, protective lacquer coating which helps prevent discoloration. Do not use abrasive waxes or cleaners.

**ASK FOR OTHER FINE DECORATIVE HARDWARE BY H.B. IVES**



"S" KNOCKER C2-3115-605 BRT

MADE EXCLUSIVELY FOR H.B. IVES IN PORTUGAL