

**PURE IP™ READER CONTROLLER
QUICK INSTALLATION INSTRUCTIONS
MODELS: RC-04-PRX-W(K), RC-04-MCT-W(K)**

Questions? Scan our QR code or visit
www.isonas.com/support/installFAQ



Tools

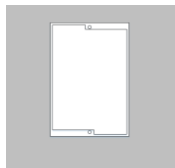
- Philips Screwdriver
- Dielectric Grease
- Exterior Silicone
- T18 Security Torx Bit (Optional)
- 1" Hole Saw (if no back box)

Step 1

For the most straightforward install and connectivity to Pure Access™ please program the Pure IP™ device before installing it in the field. By default the unit is set for DHCP and will attempt to communicate Pure Access™ Cloud. See reverse side of this sheet for network configuration.

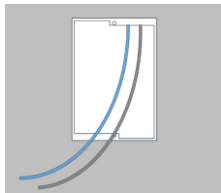
Step 2

Locate and/or install single gang electrical box or larger box with a single gang mud ring. *Note: If no box is available a 1" hole can be cut in the mounting surface.*



Step 3

Run your Ethernet cable (Cat5e/6) down into the box and the pigtail wire up to a secure junction box in the overhead.



Step 4

Wire the pigtail to the peripheral devices (Lock, REX/AUX, etc) at the door. Please refer to the wiring insert included with this device or the installation manual for more information.

Cable Connections	
Black	Lock/Power Common
Red	Lock Power
Orange	12VDC Power Input/Output
Green	REX Input
Blue	Door Sense Input
Brown	Input Common
Yellow	EDK Communication
White	EDK Communication

Step 4 (Continued)

****IMPORTANT****

- Always remember to use the proper suppression for the lock.
- DO NOT connect 24VDC to the RC-04 pigtail wires as this will permanently damage the unit and void the warranty.
- When powering by PoE the maximum available power is 12vdc @ 600ma.

Step 5

Install the mounting plate. Connect the pigtail to the eight pin connector on the RC-04 and the Ethernet cable. If powering by PoE connect the pigtail first. If power by external power connect the Ethernet cable first.

****IMPORTANT****

- If this is an exterior door or a door exposed to humidity remember to protect the cable jack with dielectric grease



Step 6

Slide the RC-04 on to the mounting plate and secure using the set screw included. For additional security a tamper proof torx screw has been included.

****IMPORTANT****

- If this is an exterior door or a door exposed to humidity remember to use silicone caulk to prevent water from intruding behind the unit.



**PURE IP™ READER CONTROLLER
QUICK NETWORK CONNECTION INSTRUCTIONS
MODELS: RC-04 ALL MODELS**

Questions? Scan our QR code or visit
www.isonas.com/support/installFAQ

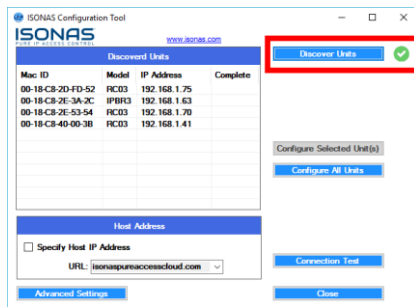


****Before starting please confirm the following items****

- Download the latest ISONAS Configuration Tool from www.isonas.com and go to Quick Links in the upper right hand corner.
- The RC-04 functions best when configured to use DHCP (factory default). Please check with your Network Administrator to ensure DHCP is available and if possible use DHCP reservations.
- The default for the RC-04 is DHCP and Client Mode set to isonaspureaccesscloud.com if this is the configuration needed **no further changes to the device are needed!**
- When connecting Pure IP™ devices to Pure Access™ Cloud ensure that port 55533 is open outbound to ensure the Pure IP™ device can connect

Step 1

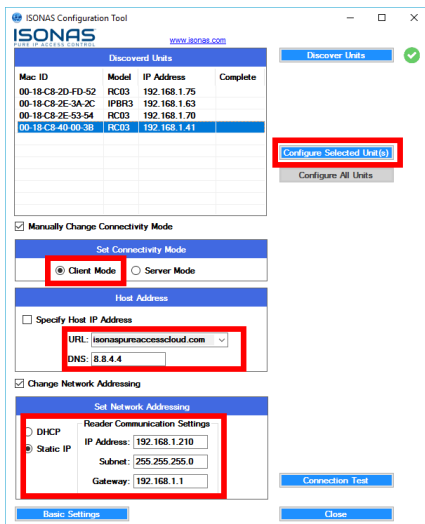
Run the Configuration Tool and click on the **Discover Units** button



Step 2

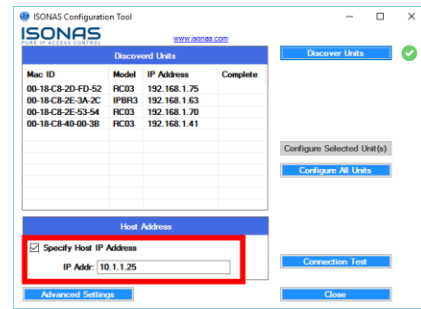
To assign static addresses to the devices click on the **Advanced Settings** button. This will expand the window and offer more options (see below).

1. Type in the IP address, Subnet and Gateway in the appropriate field. *Note that static addresses can only be assigned one unit at a time.*
2. Ensure the unit is set in Client Mode, the correct URL is set (or Host IP for Pure Access) and a valid DNS address is present. The default is 8.8.4.4 which is free Google DNS.
3. Highlight the unit to be configured and click on the **Configure Selected Unit(s)** button (see below).



Step 3

When using Pure Access™ Manager the address of the Host will change. Where it says **Specify Host IP Address** place a check mark in the box and enter the IP of the Host (see below).



Step 4

Add the device to Pure Access™ using the steps below. *If you experience issues please scan the QR Code above for additional resources or see the network insert for best practices.*

1. Log into your Pure Access™ instance via a web browser
2. Click on the **Access Control** tab at the top and then click on the **Access Points** tab below that.
3. Click on the **+** icon to add the RC-04 to the system.
4. Type in the MAC address of the RC-04 and either tab to the next field or left click in the Access Point Name field. The device should now show **Ready, Device Connected** above the MAC address field.
5. Enter in the Access Point Name and continue on with the configuration wizard.

