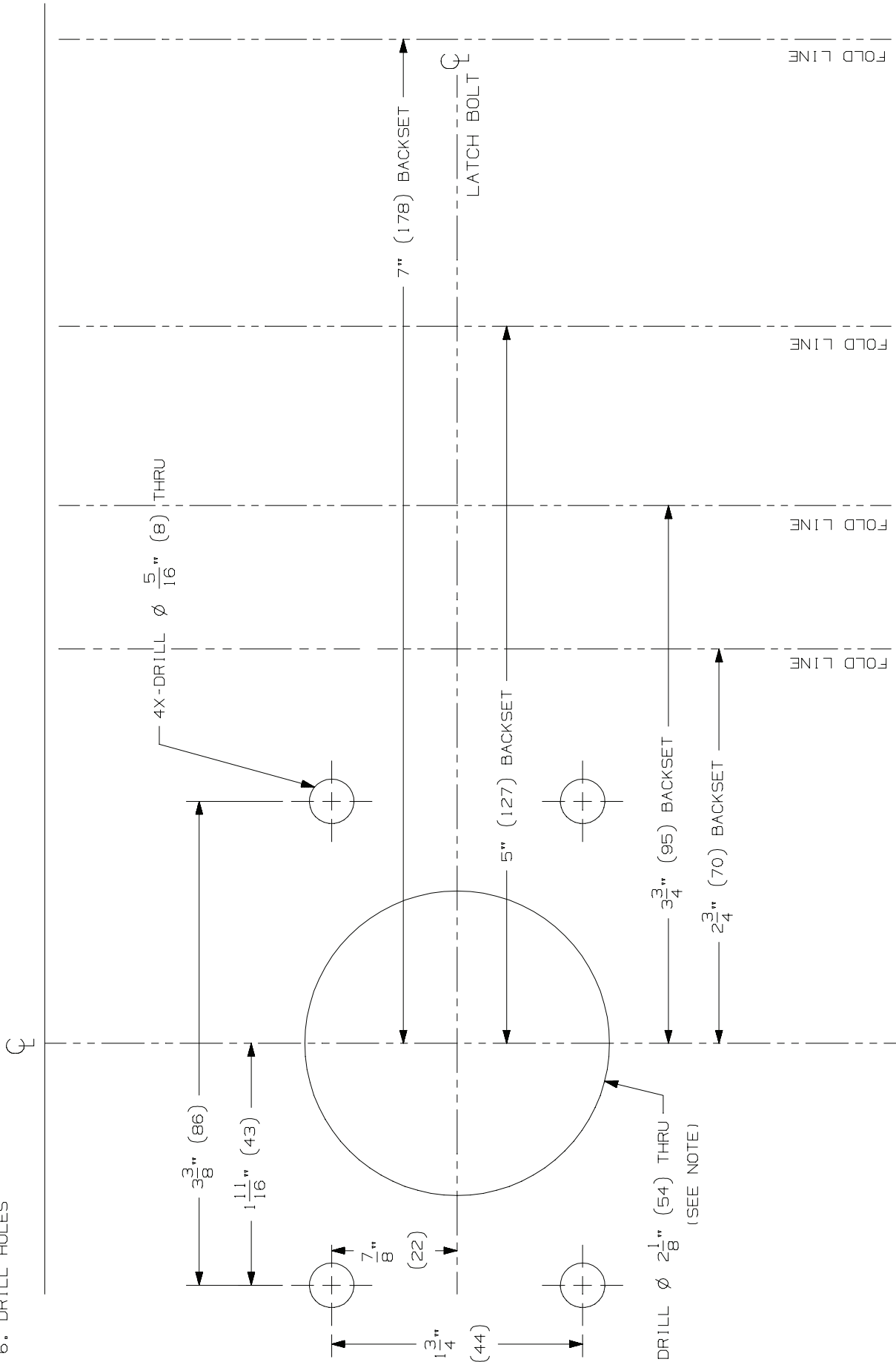


1. SELECT DESIRED BACKSET- 2 3/4", 3 3/4", 5" OR 7" (70, 95, 127 OR 178)
2. FOLD ON DOTTED LINE.
3. PLACE FOLD ON LOW EDGE OF BEVEL.
4. LINE UP CENTER LINES.
5. CENTER PUNCH FOR ϕ 2 1/8" (54) HOLE, THE ϕ 1 1/16" (27) HOLE, AND THE FOUR ϕ 5/16" (8) MOUNTING HOLES.
6. DRILL HOLES



TEMPLATE TO SCALE. DO NOT COPY OR FAX.

NOTE: THE ϕ 2 1/8" (54) HOLE CAN BE AS SMALL AS ϕ 1 1/16" (27).

GLYNN-JOHNSON

**HL6 HORIZONTAL PADDLE BACKSET
MOUNTING TEMPLATE**



NOTE: DIMENSIONS IN () ARE IN MILLIMETERS

TEMPLATE
NUMBER:

INST.HL6BS_B.PG2

DATE:
05-29-15