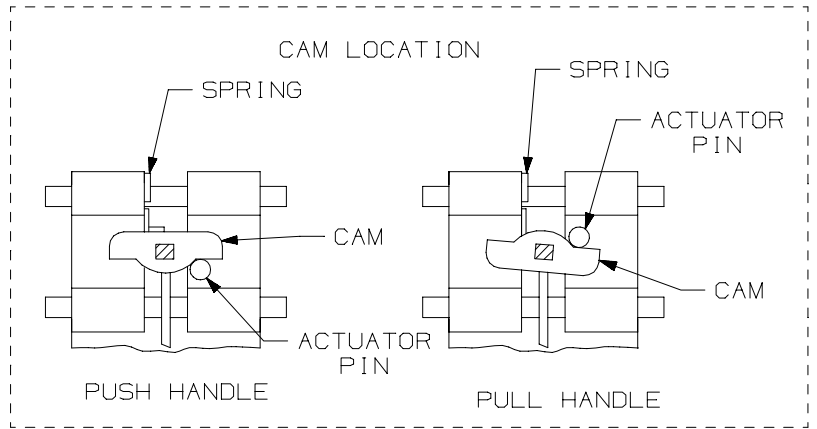




③

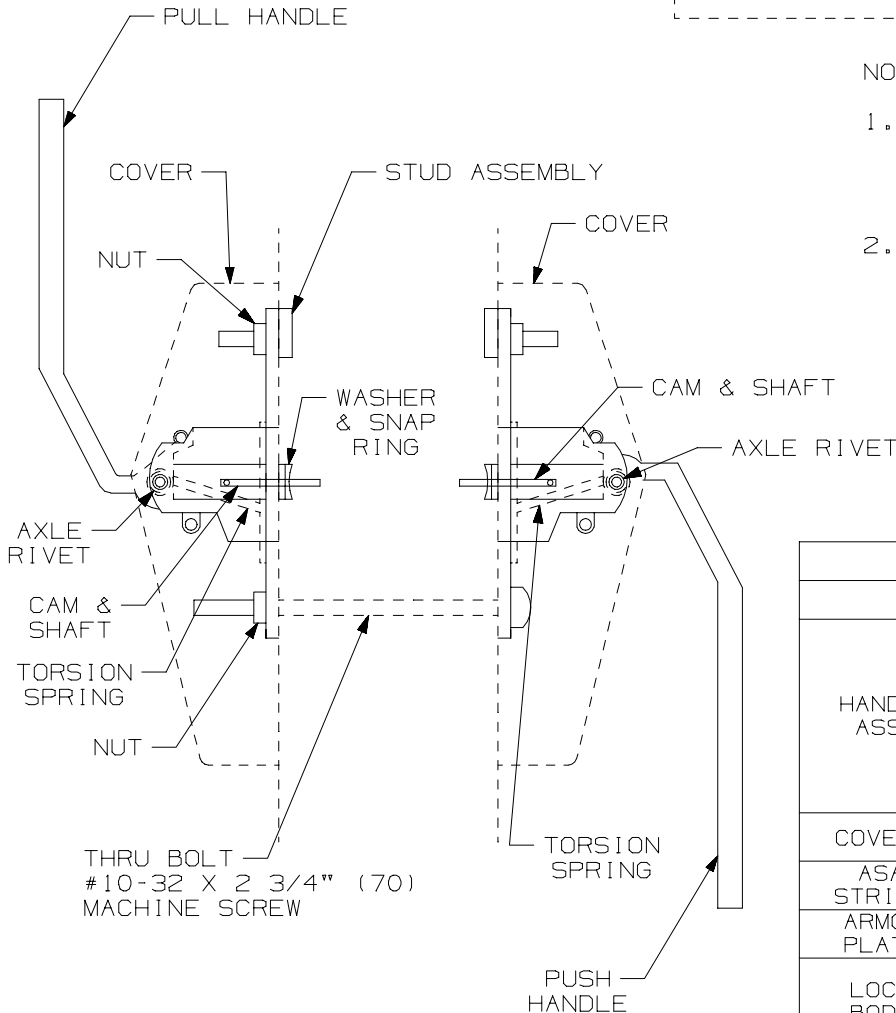
- A. INSTALL STUD ASSEMBLY (EITHER THRU THE TOP 2 MOUNTING HOLES FOR VERTICAL PADDLE MOUNTING OR THRU THE FRONT 2 MOUNTING HOLES FOR HORIZONTAL PADDLE MOUNTING).
- B. INSTALL LOCK WITH RADIUS SIDE OF LATCH TOWARDS PUSH SIDE OF DOOR. TO REVERSE LATCH, PULL OUT AND TURN 180°.
- C. REMOVE COVERS FROM HANDLE ASSEMBLY.
- D. CHECK THE CAM POSITION ON THE PUSH HANDLE ASSEMBLY (SEE CHART).
- E. INSTALL PUSH HANDLE ASSEMBLY WITH LOCK SHAFT IN KNOB HUB.
- F. SECURE HANDLE ASSEMBLY USING 2 OF THE 10-32 KEPS NUTS.
- G. CHECK THE CAM POSITION ON THE PULL HANDLE ASSEMBLY (SEE CHART).
- H. INSTALL PULL HANDLE ASSEMBLY WITH LOCK SHAFT IN KNOB HUB.

- I. SECURE HANDLE ASSEMBLY USING 2 OF THE 10-32 KEPS NUTS. INSTALL THRU BOLTS (EITHER BOTTOM PAIR OF MOUNTING HOLES FOR VERTICAL PADDLE MOUNTING OR BACK PAIR OF MOUNTING HOLES FOR HORIZONTAL PADDLE MOUNTING) WITH THE 10-32 KEPS NUTS.
- J. INSTALL CYLINDERS OR THUMBTURN AS NECESSARY AND SECURE. USES A 1 1/8" MORTISE CYLINDER WITH A COVER LEAF CAM.
- K. INSTALL COVERS.
- L. INSTALL ARMOR PLATE ON LOCK.



NOTE:

- 1. WHEN CYLINDER(S) APPLICATIONS ARE USED, PADDLES(S) ON KEY SIDE MUST BE MOUNTED IN "DOWN" POSITION OR HORIZONTAL
- 2. WHEN THUMBTURN APPLICATIONS ARE USED, PADDLES MUST BE MOUNTED IN THE HORIZONTAL POSITION.



SCREW DETAILS		
	QTY.	
HANDLE ASSY	2	10-32 X 2 3/4" TRPHMS
	6	10-32 KEPS NUT
	2	STUD ASSEMBLY
	4	10-32 X 3/8" TRPHMS
COVER	4	6-32 X 3/8" UFPHMS
ASA STRIKE	2	12-24 X 1/2" UFPHMS
ARMOR PLATE	2	12-24 X 1/2" UFPHMS
LOCK BODY	2	12-24 X 1/2" UFPHMS
	2	#12 X 1" FPHSMS

**GLYNN-JOHNSON**

**HL6-9000 PUSH-PULL LATCH  
INSTALLATION TEMPLATE**



**ALLEGION**

NOTE: DIMENSIONS IN ( ) ARE IN MILLIMETERS

TEMPLATE NUMBER:

**INST.HL6M\_B.PG2**

DATE:  
**05-29-15**