

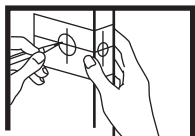
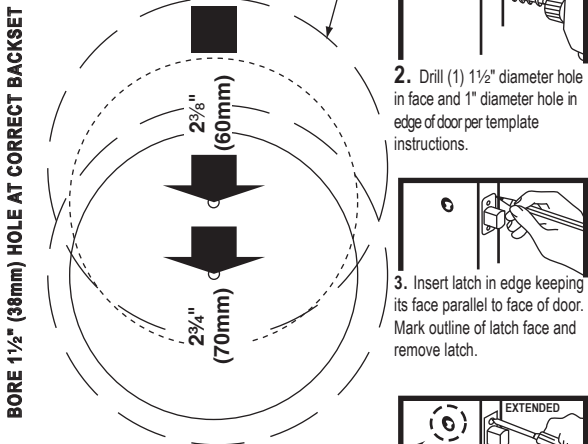
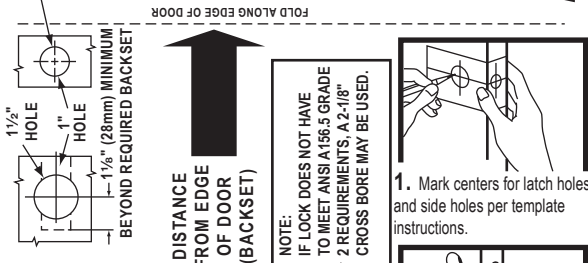
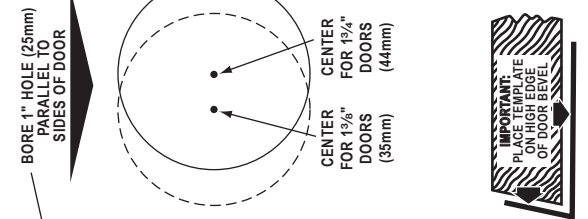


FALCON®

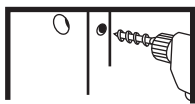
017546-000-70

D800 DEADBOLT INSTALLATION & TEMPLATE

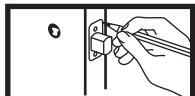
Before installing, read all instructions and lay parts out as shown in figure 7A or 7B.



1. Mark centers for latch holes and side holes per template instructions.



2. Drill (1) 1 1/2" diameter hole in face and 1" diameter hole in edge of door per template instructions.



3. Insert latch in edge keeping its face parallel to face of door. Mark outline of latch face and remove latch.



4. Chisel 5/32" (3.97mm) deep or until latch face is flush with door edge.

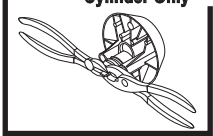


5. Insert latch and secure with two (2) No. 7 x 3/4" wood screws. Tighten screws.

IMPORTANT: EXTEND DEAD BOLT BEFORE PROCEEDING

6. TAILPIECE ADJUSTMENT

For D831 Double Cylinder Only



- A. Determine proper score mark.
- B. Grip tailpiece next to score mark for your door thickness.
- C. With diagonal cutters (dikes), grip tailpiece on the indicated score mark as close as possible to cutter-pivot. Twist off tailpiece excess.

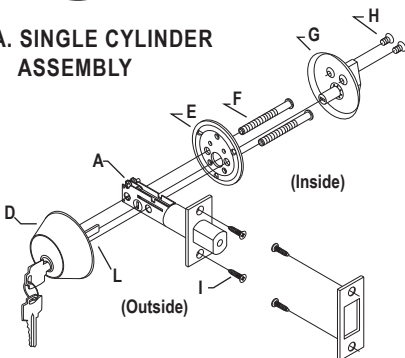


7. TRIM ASSEMBLY



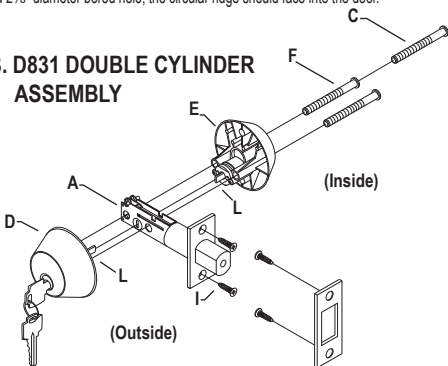
Mount housing (D) (with threaded holes) on the outside of the door with tailpiece (L) engaging the vertical slot in the deadbolt (A).

8A. SINGLE CYLINDER ASSEMBLY



Single Cylinder: Screw $\frac{1}{4}$ " bolts (F) thru plate *(E) into housing (D) and tighten. Engage tailpiece (L) with thumbturn (G). Fasten thumbturn (G) to plate (E) with short machine screws (H). *NOTE: Align plate with the large holes below the small holes as shown. For a $1\frac{1}{2}$ " diameter bored hole, the 3 dimples should face into the door. For a $2\frac{1}{8}$ " diameter bored hole, the circular ridge should face into the door.

8B. D831 DOUBLE CYLINDER ASSEMBLY



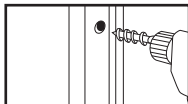
Double Cylinder: Screw $\frac{1}{4}$ " bolts (F) thru housing (E), into housing (D) engaging tailpieces (L) with the vertical slot in the dead bolt.

Important: Check locking and unlocking of both sides with door open. Lock must be properly mounted and functioning before 1 mounting screw can be replaced with non-tamper screw (C) supplied. **CAUTION:** Once tightened, screw cannot be removed by conventional methods.

9. STRIKE INSTALLATION

A. Mark the corners of the dead bolt with crayon or grease pencil. Retract deadbolt and close door. Throw deadbolt firmly against jamb to transfer markings.

B. Bore $1\frac{1}{8}$ " diameter hole $1\frac{1}{8}$ " deep, centered between the markings. **CAUTION:** Deadbolt will not function correctly if hole is too shallow.



C. Place strike on jamb, centering over hole and parallel to edge of frame. Mark outline and remove strike.



D. Chisel cutout $\frac{1}{16}$ " deep.



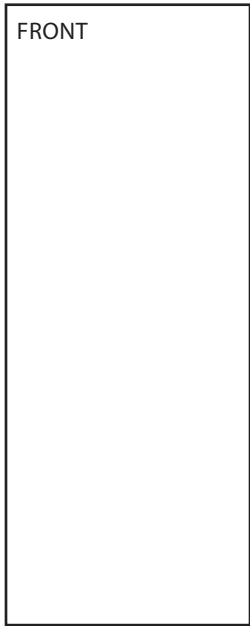
E. Install strike with No. 7 x $\frac{3}{4}$ " screws. Tighten screws.



ALLEGION

© Allegion 2014
Printed in U.S.A.
017546-000-70 Rev. 10/14-d

3.250



8.250

BEGINNING SHEET

Additional Notes:
1. None

Revision History						Revision Description:				
A	B	C	D	E	F	D > Revised artwork				
4600-133	0790	6683								
Material						Edited By	Approved By	EC Number	Release Date	
White Paper						J. Ellis	M. Roberts	xxxxx	10/14	
Notes						Title				
1. printed two sides						Instruction Sheet, D800				
2. printed black						Creation Date	Number		Revision	
3. tolerance ± .13						10-28-14	017546-000-70		D	
4. printed in country may vary						Created By	Activity			
						J. Ellis	3899 Hancock Expwy			
						Software: InDesign CS6	Security, CO 80911		© Allegion 2014	