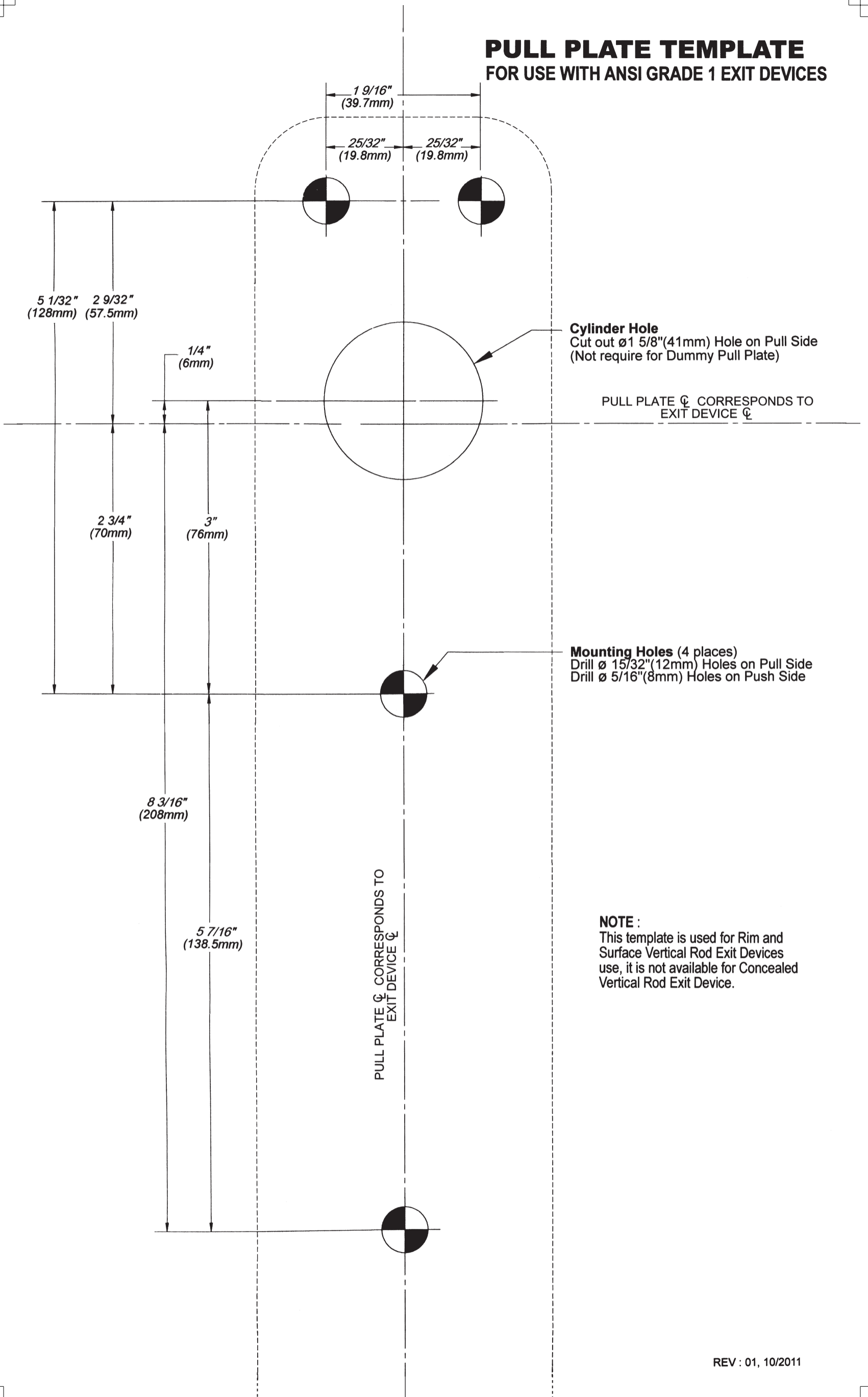


PULL PLATE TEMPLATE FOR USE WITH ANSI GRADE 1 EXIT DEVICES



Cylinder Hole
Cut out $\varnothing 1\ 5/8"$ (41mm) Hole on Pull Side
(Not require for Dummy Pull Plate)

PULL PLATE \varnothing CORRESPONDS TO
EXIT DEVICE \varnothing

Mounting Holes (4 places)
Drill $\varnothing\ 15/32"$ (12mm) Holes on Pull Side
Drill $\varnothing\ 5/16"$ (8mm) Holes on Push Side

NOTE :
This template is used for Rim and
Surface Vertical Rod Exit Devices
use, it is not available for Concealed
Vertical Rod Exit Device.

PULL PLATE \varnothing CORRESPONDS TO
EXIT DEVICE \varnothing