

Dynamic product solutions with price competitive options



Dexter Commercial Hardware provides you with affordable product solutions for locks, exits and closers for price sensitive projects.

## Locks

- Grade 1 and Grade 2 cylindrical and deadbolt
- Accommodates SFIC
- Most common functions
- Four finishes, two lever designs, one knob design



**C1000 Series**



**C2000 Series**



**DB2000 Series**

## Exit devices

- Grade 1 devices
- Panic rim, fire rim and panic surface vertical rod systems
- Two finishes, variety of trim options



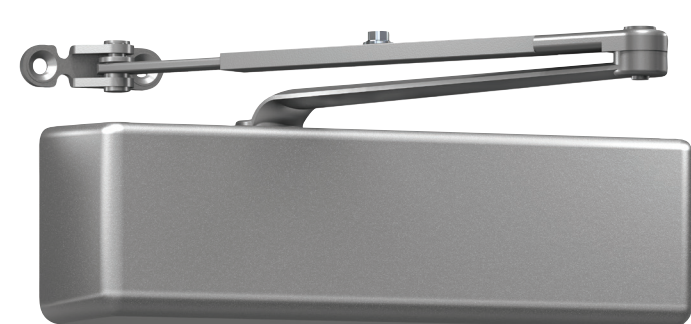
**ED1000 Series**



**ED1500 Series**

## Door closers

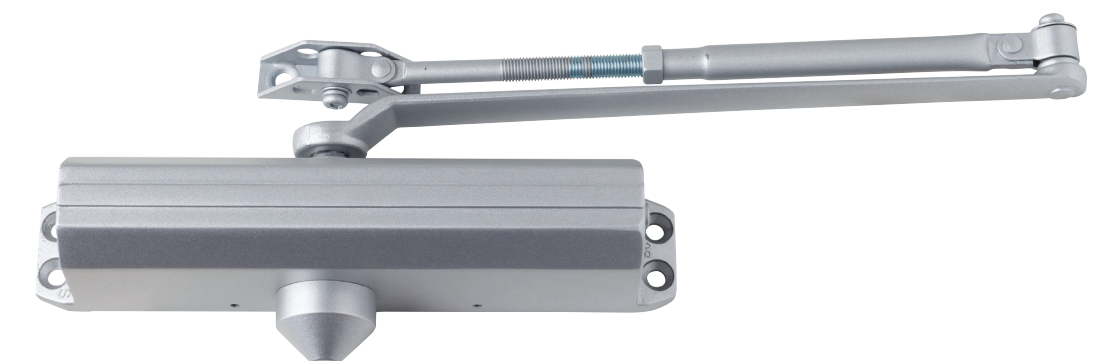
- Grade 1 door closers
- Heavy, medium, and light duty
- Two finishes
- Four arm styles
- Meets most common hole patterns



**DCH4000 Series**



**DCM1000 Series**



**DCL2000**