

Product Bulletin

Brand/product: Zero International

Date: July 06, 2026

Subject: July 2026 Price Book Update

Weatherstripping

Pages 48–49: Descriptions updated for various part numbers.

Solutions and Specialty Products

Page 51: Note added under Cam Lift Hinges section. Millimeter conversions added to Flood Barrier and Finger Guard sections.

Expansion Shield / Anchors

Page 53: #221 Part No 47257389 – pricing updated.

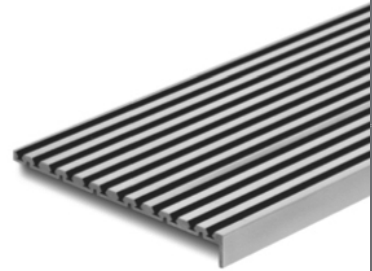
Screw Packs

Page 55: Added following screw packs 48584228, 48584229, 48584230, 48584231 for models 55, 55FS, 155, 255, 555, 555FS, 712.



Price book 13

Effective February 27, 2026 - Rev. 07/26





United States Customer Care

Our Customer Care Representatives are available for questions or assistance.

877-671-7011

Customer service

- 📞 Press **1**
- ✉ Support@allegion.com

Technical support

- 📞 Press **2**
- ✉ Accessories_TechProdSupport@allegion.com

For new projects or to locate an authorized distributor

- 📞 Press **3**

United States Administrative Office

11819 N. Pennsylvania Street
 Carmel, IN 46032
allegion.com/us

Canada Customer Care

Our Customer Care Representatives are available for questions or assistance.

- 📞 800-900-4734
- ✉ Canada.CustomerService@allegion.com

Technical product support

- ✉ Canada.TechServices@allegion.com

Placing orders

You can place orders with Allegion via the fax number or email listed below:

- 📞 1-800-209-4734
- ✉ Canada.Orders.Service@allegion.com

Canada Administrative Office

1076 Lakeshore Road East
 East Mississauga, Ontario L5E 1E4
allegion.ca

United States Request for quote

Carolinas

(North Carolina, South Carolina, Virginia)
Carolinas.Quotes@allegion.com

Central

(Illinois, Iowa, Kansas, Missouri, Nebraska)
Central.Quotes@allegion.com

Chicago

(Northern Illinois, Wisconsin)
Chicago.Quotes@allegion.com

Florida

Florida.Quotes@allegion.com

Metro New York

(Metro New York, Northern New Jersey)
Metro.Quotes@allegion.com

Michigan

Michigan.Quotes@allegion.com

Mid Atlantic North

(New York, Western Pennsylvania)
Mid.Atlantic.North.Quotes@allegion.com

Mid Atlantic South

(Delaware, Eastern Pennsylvania, Maryland, Northern Virginia, Southern New Jersey, Washington DC)
Mid.Atlantic.South.Quotes@allegion.com

Midwest

(Indiana, Kentucky, Ohio, West Virginia)
Midwest.Quotes@allegion.com

Mountain States

(Colorado, Idaho, Montana, Nevada, Utah, Wyoming)
Mtn.States.Quotes@allegion.com

New England

(Connecticut, Maine, Massachusetts, New Hampshire, Rhode Island, Vermont)
NewEngland.Quotes@allegion.com

North Central

(Minnesota, North Dakota, South Dakota)
NorthCentral.Quotes@allegion.com

Northern California

NoCal.Quotes@allegion.com

Northwest

(Alaska, Oregon, Washington)
Northwest.Quotes@allegion.com

South

(Alabama, Georgia, Louisiana, Mississippi, Tennessee)
South.Quotes@allegion.com

Southern California

(Southern California, Hawaii)
SoCal.Quotes@allegion.com

Southwest

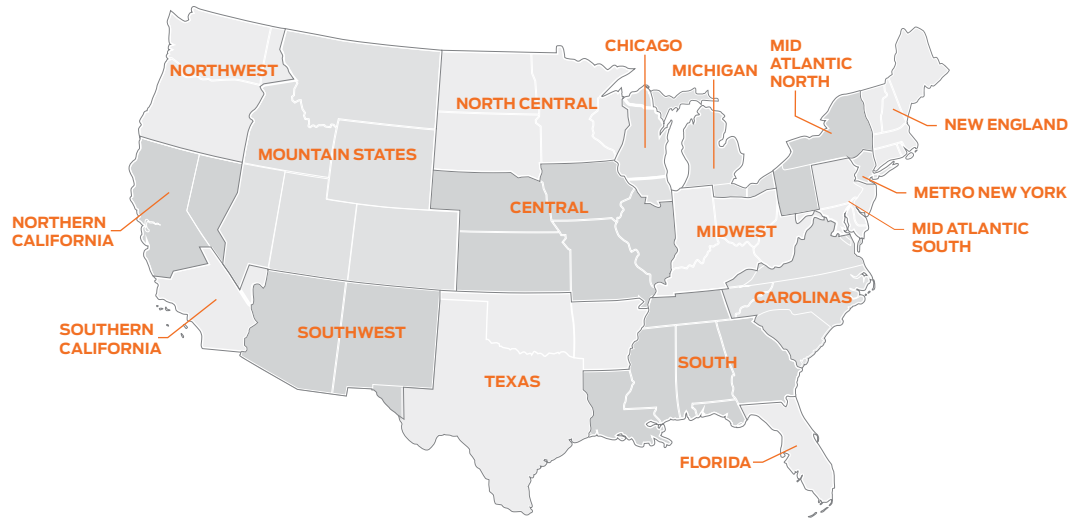
(Arizona, New Mexico)
Southwest.Quotes@allegion.com

Texas

(Arkansas, Texas, Oklahoma)
Texas.Quotes@allegion.com

Canada Request for quote

(All Regions/Provinces)
Quote.Request.Canada@allegion.com





Contents

Doing business with Allegion 4
Finish cross-reference guide 6

Thresholds

Threshold models and options 7
 Thresholds 8
 Half thresholds 10
 Carpet divider thresholds 11
 Offset & rabbeted thresholds 12
 Interlocking/adjustable interlocking bronze
 threshold systems 13
 Thermal break thresholds 14
 Adjustable thresholds 15
 Ramps 17
 Specialized threshold solutions 18

Automatic door bottoms

Heavy duty 19
 Regular duty 22
 Light duty 23
 Special purpose - Sliding & pocket doors 23
 Special purpose - ADA Compliant door bottoms 24

Perimeter seals

Specialized perimeter seal accessories 26
 Door sweeps 26
 Door shoes 29
 Adjustable sealing systems - jamb-applied 31
 Head & jamb gasketing 32
 Head & jamb FS3003 intumescent seals 36
 Meeting stiles 36
 Astragals 39
 Door closer mounting brackets 40

Weatherstripping

Kerf frame weatherstripping 41
 Self-adhesive weatherstripping 43
 Weatherstripping for doors & windows 49
 Cushion-spring seals 49
 PSA weatherstripping for glass doors 49
 Edge protection for sliding glass doors 50

Solutions and specialty products

Sound control systems 51
 Cam lift full mortise hinges 51
 Flood barrier shields 51
 Finger guards 51
 BioWall™ Antibacterial finger guards 52

Replacement parts and extras

Expansion shield/anchors 53
 Nails 53
 Anchor quantities by threshold length 53
 Security screws 53
 End cap sets 54
 Automatic door bottom accessories 54
 Screw packs 54
 Miscellaneous 56
 Replacement rubber 56
 Custom bulkhead template 57

Sustainability

Allegion can provide sustainability documentation for select products, ensuring transparency and adherence to environmental standards and building certification programs such as LEED and Living Building Challenge. This documentation includes detailed information on the sustainable practices and materials used, helping you make informed decisions that align with your sustainability goals.

To view the full list of products with declarations, please visit: <https://us.allegion.com/en/resources/sustainability.html>

Markings cartons:

Markings (e.g., door locations, stock reference numbers) on individual product cartons will be provided with no charge!

¹ Applies to United States market only.



Online ordering is available through Overtur™ Estimate and Order (OEO)

OEO offers much more than placing online orders including:

- Provides net price for direct customers and list price for indirect customers, integrator partners and end-users
- Online Ordering for direct customers
- Automated price updates
- Ability to export price lists and cross-reference guides in Excel
- Configuration and configuration reports, including e-lock configurations
- Request a quote or quote revision from an estimate
- Keying Guide
- Library pre-built hardware sets

How to get it:

1. Login or register at <http://360portal.allegion.com>
2. Find the Estimate and Order Icon and follow the instructions to request access
3. The Online Ordering team will begin working on your access with your Allegion Sales Representative

Traditional ordering methods

United States

- ✉ Allegion_Orders@allegion.com
- ☎ 1-800-248-1460

Canada

- ✉ Canada.Orders.Service@allegion.com
- ☎ 1-800-209-4734

Training and Troubleshooting



Scan the QR Code to access our resource center or visit

<https://support.oeo.allegion.com/hc/en-us>

Questions or issues should be reported to Online.Ordering.Support@allegion.com for escalation

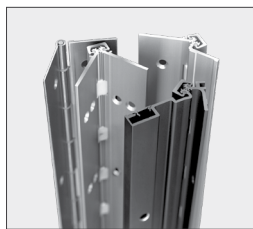
Policies and documents

The purchase of Allegion products is governed by the Allegion Authorized Seller Program. For program terms and conditions, and other program details, please visit:

- USA www.allegion.com/AuthorizedSeller
- CAN www.allegion.ca/policies

For Warranty information, visit us.allegion.com/warranty or contact Customer Service at:

- USA 877-671-7011
- CAN 800-900-4734



Claims

All claims for shortage or improper filling of order should be made within 10 days of receipt.

Guarantee

One year against defects in material or workmanship. Defective material will be replaced, however, no back charges for damage incurred or work done thereon will be allowed.

United States Only

Minimum charge

\$50.00 Net. Surcharge may apply. Material charged to next stock size.

Cancellation charge

20% If order is fabricated and packed.

Terms

Payable in U.S. Currency. Material charged to next stock size. All prices are F.O.B. factory.

Returns

No returns accepted without prior authorization. Returns should be made within 30 days of authorization, freight prepaid, 45% restocking and handling charge will apply. Returns made after 30 days from date of delivery will receive a credit to their account to be applied to future orders. Non-standard and specialty fabricated items are not returnable.

Custom charge

Special door markings and bulk packaging markings available at no charge.

Fabrication

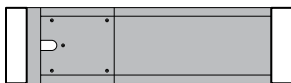
- All items cut with tolerance -0+1/8" to 1/2" (3.2mm to 12.7mm)
- Drilling according to industry practice.
- All threshold straight cut.
- NH - No Holes Standard List - All models where NH is standard can have holes drilled as Engineered Special. Customer must submit template with order. See threshold chart for options.

	LIST ADD
Pivot holes	\$70.54/each
Coping (detail required)	
L cut	\$70.54/each
U cut	\$141.06/each
Return ends	\$317.82 added to total list price threshold
Miter	\$15.91/each
Ripping	\$19.82/each
Spot weld	\$28.67/ft
Beveling	\$19.82/ft
Floor closer cover	Prices are addition to threshold list prices.
Long length threshold charge (thresholds >10') For thresholds above 10', only 11', 12', 13', 14' and 14'6" lengths can be ordered. 14'6" only available in A mill aluminum finish.	\$15.11

Maximum lengths: Thresholds 174" (168" for anodized finishes)

TYPE 1

For doors hung in center of frame

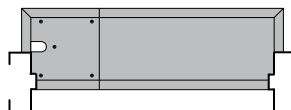


Left hand shown

\$216.91 List Adder single door
\$443.34 List Adder double door

TYPE 3

For use with all offset closers and pivot sets

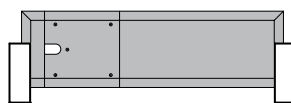


Left hand shown

\$617.09 List Adder single door
\$1,234.20 List Adder double door

TYPE 4

For doors hung flush with face of frame

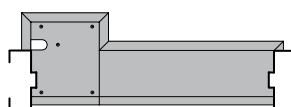


Left hand shown

\$617.09 List Adder single door
\$1,234.20 List Adder double door

TYPE 5

For use with offset closers and pivot sets



Left hand shown

\$771.38 List Adder single door
\$1,542.78 List Adder double door

OPTIONS		LIST ADD	
E	Epoxy tread	\$16.86	List price adder x width in inches x length per foot. See table for specific model widths.
EL	Photoluminescent and epoxy tread	\$16.86	
V3	Full body fill for thresholds	\$24.10	
EV3	Epoxy tread and V3 full body fill	\$40.97	
ELV3	Photoluminescent and epoxy tread with V3 full body fill	\$40.97	

Use Threshold adder chart for widths and available options.

Example: 655A-V3-36"

Threshold: \$28.54 x 3 (ft) = \$85.59

V3 Adder: \$24.10 x 5 (inches in width) x 3 (feet in length) = \$361.67

Total Price: \$85.59 + \$361.67 = \$447.24

OPTIONS		LIST ADD
FLO	Air flow configuration (Sweeps, shoes, door bottoms)	\$6.04/ft
LS	Light spring for door bottoms	
PSA	Pressure sensitive adhesive (Weatherstripping, intumescent)	
SEC	Security screws	
Z49	Z49 door bottom end cap system (with pull out, standard)	\$31.36
	Z49 door bottom end cap system (without pull out, must specify Z49 only)	\$20.88
	Pull out feature (PL)	\$10.49
ZAG	Anti-ligature (Weatherstripping, head & jamb)	\$2.21/ft

Fasteners - Supplied at no charge except drive screws and nails (see page 53). Flathead wood screws supplied with threshold, expansion shields extra.

ROUNDING RULES

Thresholds: Round up to next 1/2 foot (except 600CP, 601CP)

Door sweeps: Round up to the next 1/2 foot

Head & jamb -

Set: Width to next 1/2 foot x (height to next 1/2 foot x 2)

Stick: Round up to the next 1/2 foot

Gasketing/weatherstripping: Round up to the next full foot



FINISH CROSS-REFERENCE GUIDE

FINISH DESIGNATION	BHMA	DESCRIPTION
A	-	Aluminum, Mill Finish
AA	628	Aluminum Clear Anodized
B	-	Bronze, Architectural Mill Finish
BK	711	Aluminum Black Anodized
B-POL ¹	-	High Buff Polished Bronze
B-ORB ¹	613	Oil Rubbed Bronze
B-SAT ¹	-	Satin Polished Bronze
D	710	Aluminum Dark Bronze Anodized
G ²	688	Aluminum Gold Anodized (N/A in lengths longer than 117")
SP	-	Steel Prime
STST	-	Stainless Steel

Black, Dark Bronze and Gold Anodized finishes will show wear over time and are not included in the standard warranty. Also, color anodized finishes may require an extended lead time for finishing.

BRONZE FINISHING ¹	BHMA	DESCRIPTION
B-ORB ²	613	Oil Rubbed Bronze
B-POL ³	-	High Buff Polished Bronze
B-SAT ³	-	Satin Polished Bronze

1. Add 40% to List price.
2. No E, EL, V3, EV3, or ELV3 if B-ORB is requested.
3. 7000, 7332, 7334, 7335, 7336, and 7338 only.

 ZERO FASTTRACK STOCKED OFFERING¹

Zero FastTrack stocked offering includes over 170 of our most popular products that will typically ship in 5 business days or less. Where models are designated as stocked in FastTrack, consult the FastTrack Price Book for specific SKU information.

¹ FastTrack Stocked offering does not apply to Canada.

To place an order for FastTrack

Order via the standard ordering process and submit only stocked items on your purchase order. Purchase orders that contain a mix of standard product and stocked items will continue to follow existing customer account preferences (ship complete or ship partial). Made-to-order products will continue to ship within standard lead times.

Stocked FastTrack products will ship in 5 business days or less when ordered through FastTrack. The FastTrack ordering process does not apply to Canada. Items in Bold indicate new Zero products (available as of Q3 2025).



Thresholds

Threshold models and options

Model	NH - optional or standard	Threshold width for adder	E or EL available	V3 available
15	Standard	N/A	-	-
48	Standard	N/A	-	-
49	Standard	N/A	-	-
63	Standard	3"	Yes	Yes
64	Optional	3"	Yes	Yes
65	Optional	5"	Yes	Yes
68	Standard	N/A	-	-
69	Standard	N/A	-	-
70	Optional	2"/3"	Yes	-
73	Optional	2"/4"	Yes	Yes
76	Optional	2"/4"	Yes	-
80	Optional	2"/5"	Yes	-
102	Standard	6"	Yes	-
103	Standard	7"	Yes	-
104	Standard	6"	Yes	-
105	Standard	N/A	-	-
106	Standard	N/A	-	-
107	Standard	N/A	-	-
164	Optional	4"	Yes	Yes
168	Standard	N/A	-	-
175	Optional	3"/5"	Yes	Yes
232	Standard	6"	Yes	Yes
233	Standard	3"	Yes	-
234	Standard	3"	Yes	-
235	Standard	3"	Yes	-
236	Standard	6"	Yes	-
237	Standard	4"	Yes	-
238	Standard	4"	Yes	-
259R	Standard	N/A	-	-
265	Optional	5"	Yes	Yes
267	Optional	2"	Yes	-
268	Standard	N/A	-	-
269	Standard	N/A	-	-
304	Optional	2"	-	Yes
469	Standard	N/A	-	-
522	Optional	2"	Yes	Yes
523	Optional	3"	Yes	Yes
524	Optional	3"	Yes	Yes
525	Optional	5"	Yes	Yes
526	Optional	6"	Yes	Yes
544	Optional	4"	Yes	Yes
545	Optional	5"	Yes	Yes
546	Standard	6"	Yes	Yes
547	Standard	7"	Yes	Yes
548	Standard	8"	Yes	Yes
560	Optional	5"	Yes	Yes
561	Optional	5"	Yes	Yes
563	Optional	4"	Yes	Yes
564	Optional	4"	Yes	Yes
565	Optional	5"	Yes	Yes
566	Optional	5"	Yes	Yes
568	Optional	6"	Yes	Yes
600CP	Standard	N/A	Yes	-
601CP	Standard	N/A	Yes	-

Model	NH - optional or standard	Threshold width for adder	E or EL available	V3 available
622	Optional	2"	Yes	Yes
623	Optional	3"	Yes	Yes
624	Optional	4"	Yes	Yes
625	Optional	5"	Yes	Yes
626	Optional	6"	Yes	Yes
627	Optional	2"	Yes	Yes
628	Optional	3"	Yes	Yes
643	Optional	3"	Yes	Yes
647	Standard	7"	Yes	Yes
653	Optional	3"	Yes	Yes
654	Optional	4"	Yes	Yes
655	Optional	5"	Yes	Yes
656	Standard	6"	Yes	Yes
657	Standard	7"	Yes	Yes
663	Standard	3"	Yes	Yes
664	Optional	4"	Yes	Yes
672	Standard	2"	Yes	-
673	Standard	3"	Yes	-
674	Standard	4"	Yes	-
675	Standard	5"	Yes	-
676	Standard	6"	Yes	-
678	Standard	8"	Yes	-
1545	Optional	3"	Yes	Yes
1673	Optional	3"	Yes	Yes
1674	Optional	4"	Yes	Yes
1675	Optional	5"	Yes	Yes
1682	Optional	2"	Yes	Yes
1684	Optional	4"	Yes	Yes
1685R	Standard	N/A	-	-
1686R	Standard	N/A	-	-
2361	Standard	4"	Yes	-
2673	Standard	3"	Yes	-
2676	Standard	6"	Yes	-
3672	Standard	2"	Yes	-
3673	Standard	3"	Yes	-
3674	Standard	4"	Yes	-
3675	Standard	5"	Yes	-
3676	Standard	6"	Yes	-
6570	Standard	7"	Yes	Yes
6575	Standard	8"	Yes	Yes
6710	Standard	10"	Yes	-
7000	Optional	N/A	-	-
7332	Optional	N/A	-	-
7334	Optional	N/A	-	-
7335	Optional	N/A	-	-
7336	Optional	N/A	-	-
7337	Optional	N/A	-	-
8452	Optional	2"	Yes	-
8655	Optional	5"	Yes	Yes
8724	Optional	6"	Yes	Yes
8726	Optional	8"	Yes	Yes
8729	Optional	7"	Yes	Yes



THRESHOLDS

AUTOMATIC DOOR BOTTOMS

PERIMETER SEALS

WEATHERSTRIPPING

SOLUTIONS & SPECIALTY PRODUCTS

PARTS

THRESHOLDS		LIST PRICE			FastTrack
Part No.	Description	Each	Per Foot	Per Meter	Stocked
63A	Threshold, Aluminum, 3" x 1/4" (76.2 x 6.4)	-	\$13.61	\$44.65	
63BK	Threshold, Black anodized, 3" x 1/4" (76.2 x 6.4)	-	\$20.56	\$67.45	
63D	Threshold, Dark bronze anodized, 3" x 1/4" (76.2 x 6.4)	-	\$19.68	\$64.57	
63G	Threshold, Gold anodized, 3" x 1/4" (76.2 x 6.4)	-	\$21.43	\$70.31	
64A	Threshold, Aluminum, 2-1/2" (63.5)	-	\$10.00	\$32.81	
64BK	Threshold, Black anodized, 2-1/2" (63.5)	-	\$15.13	\$49.64	
64D	Threshold, Dark bronze anodized, 2-1/2" (63.5)	-	\$14.50	\$47.57	
64G	Threshold, Gold anodized, 2-1/2" (63.5)	-	\$15.77	\$51.74	
164A	Smooth top, Aluminum, 4" x 1/2" (101.6 x 12.7)	-	\$23.95	\$78.58	
164BK	Smooth top, Black anodized, 4" x 1/2" (101.6 x 12.7)	-	\$35.98	\$118.04	
164D	Smooth top, Dark bronze anodized, 4" x 1/2" (101.6 x 12.7)	-	\$34.46	\$113.06	
164G	Smooth top, Gold anodized, 4" x 1/2" (101.6 x 12.7)	-	\$37.54	\$123.16	
164B	Smooth top, Bronze, 4" x 1/2" (101.6 x 12.7)	-	\$90.87	\$298.13	
544A	Handicap threshold, Aluminum, 4" (101.6)	-	\$16.86	\$55.31	
544BK	Handicap threshold, Black anodized, 4" (101.6)	-	\$26.01	\$85.33	
544D	Handicap threshold, Dark bronze anodized, 4" (101.6)	-	\$24.90	\$81.69	
544G	Handicap threshold, Gold anodized 4" (101.6)	-	\$27.12	\$88.98	
545A	Handicap threshold, Aluminum, 5" (127.0)	-	\$20.18	\$66.21	▪
545B	Handicap threshold, Bronze, 5" (127.0)	-	\$83.08	\$272.57	
545BK	Handicap threshold, Black anodized, 5" (127.0)	-	\$43.62	\$143.11	
545D	Handicap threshold, Dark bronze anodized, 5" (127.0)	-	\$41.74	\$136.94	
545G	Handicap threshold, Gold anodized, 5" (127.0)	-	\$45.49	\$149.25	
546A ¹	Handicap threshold, Aluminum, 6" (152.4)	-	\$26.04	\$85.43	▪
546BK ¹	Handicap threshold, Black anodized, 6" (152.4)	-	\$39.84	\$130.71	
546D ¹	Handicap threshold, Dark bronze anodized, 6" (152.4)	-	\$38.12	\$125.07	
546G ¹	Handicap threshold, Gold anodized, 6" (152.4)	-	\$41.52	\$136.22	
547A ¹	Handicap threshold, Aluminum, 7" (177.8)	-	\$30.52	\$100.13	
547BK ¹	Handicap threshold, Black anodized, 7" (177.8)	-	\$44.73	\$146.75	
547D ¹	Handicap threshold, Dark bronze anodized, 7" (177.8)	-	\$42.83	\$140.52	
547G ¹	Handicap threshold, Gold anodized, 7" (177.8)	-	\$46.61	\$152.92	
548A ¹	Handicap threshold, Aluminum, 8" (203.2)	-	\$39.20	\$128.61	
548BK ¹	Handicap threshold, Black anodized, 8" (203.2)	-	\$58.00	\$190.29	
548D ¹	Handicap threshold, Dark bronze anodized, 8" (203.2)	-	\$55.51	\$182.12	
548G ¹	Handicap threshold, Gold anodized, 8" (203.2)	-	\$60.48	\$198.43	
647B ¹	Threshold, Bronze, 7" (177.8) wide	-	\$303.56	\$995.93	
653A	Threshold, Aluminum, 3" (76.2) wide	-	\$18.56	\$60.89	
653BK	Threshold, Black anodized, 3" (76.2) wide	-	\$28.11	\$92.22	
653D	Threshold, Dark bronze anodized, 3" (76.2) wide	-	\$26.90	\$88.25	
653G	Threshold, Gold anodized, 3" (76.2) wide	-	\$29.30	\$96.13	
654A	Threshold, Aluminum, 4" (101.6) wide	-	\$23.83	\$78.18	
654B	Threshold, Bronze, 4" (101.6) wide	-	\$108.97	\$357.51	
654BK	Threshold, Black anodized, 4" (101.6) wide	-	\$35.51	\$116.50	
654D	Threshold, Dark bronze anodized, 4" (101.6) wide	-	\$33.99	\$111.52	
654G	Threshold, Gold anodized, 4" (101.6) wide	-	\$37.02	\$121.46	

1. Supplied without mounting holes.
Special anchors available for mounting most thresholds on concrete surfaces.

Stocked FastTrack products will ship in 5 business days or less when ordered through FastTrack. The FastTrack ordering process does not apply to Canada. Items in Bold indicate new Zero products (available as of Q3 2025).



THRESHOLDS		LIST PRICE			FastTrack
Part No.	Description	Each	Per Foot	Per Meter	Stocked
655A	Threshold, Aluminum, 5" (127.0) wide	-	\$28.54	\$93.64	▪
655B	Threshold, Bronze, 5" (127.0) wide	-	\$150.09	\$492.42	
655BK	Threshold, Black anodized, 5" (127.0) wide	-	\$42.53	\$139.53	
655D	Threshold, Dark bronze anodized, 5" (127.0) wide	-	\$40.70	\$133.53	
655G	Threshold, Gold anodized, 5" (127.0) wide	-	\$44.35	\$145.51	
656A ¹	Threshold, Aluminum, 6" (152.4) wide	-	\$33.74	\$110.70	
656B ¹	Threshold, Bronze, 6" (152.4) wide	-	\$195.57	\$641.63	
656BK ¹	Threshold, Black anodized, 6" (152.4) wide	-	\$50.87	\$166.90	
656D ¹	Threshold, Dark bronze anodized, 6" (152.4) wide	-	\$48.71	\$159.81	
656G ¹	Threshold, Gold anodized, 6" (152.4) wide	-	\$53.04	\$174.02	
664STST	Smooth top, Stainless steel, 4" x 1/2" (101.6 x 12.7)	-	\$212.50	\$697.18	
6570A ¹	Handicap threshold, Aluminum, 7" x 0.500" (177.8 x 12.7)	-	\$49.28	\$161.68	
6570BK ¹	Handicap threshold, Black anodized, 7" x 0.500" (177.8 x 12.7)	-	\$73.05	\$239.67	
6570D ¹	Handicap threshold, Dark bronze anodized, 7" x 0.500" (177.8 x 12.7)	-	\$69.98	\$229.59	
6570G ¹	Handicap threshold, Gold anodized, 7" x 0.500" (177.8 x 12.7)	-	\$76.14	\$249.80	
6575A ¹	Threshold, Aluminum, 7.5" (190.5)	-	\$55.74	\$182.87	
6575BK ¹	Threshold, Black anodized, 7.5" (190.5)	-	\$83.93	\$275.36	
6575D ¹	Threshold, Dark bronze anodized, 7.5" (190.5)	-	\$80.41	\$263.81	
6575G ¹	Threshold, Gold anodized, 7.5" (190.5)	-	\$87.46	\$286.94	
8644A-36	Saddle threshold, Aluminum, 4" x 1/4" (101.6 x 6.35), 36" (914.4) length	\$36.99	-	-	▪
8644A-48	Saddle threshold, Aluminum, 4" x 1/4" (101.6 x 6.35), 48" (1219.2) length	\$49.32	-	-	
8644A-72	Saddle threshold, Aluminum, 4" x 1/4" (101.6 x 6.35), 72" (1828.8) length	\$73.99	-	-	▪
8644BK-36	Saddle threshold, Black anodized, 4" x 1/4" (101.6 x 6.35), 36" (914.4) length	\$72.11	-	-	▪
8644BK-48	Saddle threshold, Black anodized, 4" x 1/4" (101.6 x 6.35), 48" (1219.2) length	\$96.14	-	-	
8644BK-72	Saddle threshold, Black anodized, 4" x 1/4" (101.6 x 6.35), 72" (1828.8) length	\$144.21	-	-	
8644D-36	Saddle threshold, Dark bronze anodized, 4" x 1/4" (101.6 x 6.35), 36" (914.4) length	\$54.86	-	-	
8644D-48	Saddle threshold, Dark bronze anodized, 4" x 1/4" (101.6 x 6.35), 48" (1219.2) length	\$73.15	-	-	
8644D-72	Saddle threshold, Dark bronze anodized, 4" x 1/4" (101.6 x 6.35), 72" (1828.8) length	\$109.73	-	-	
8645A-36	Saddle threshold, Aluminum, 4" x 1/2" (101.6 x 12.7), 36" (914.4) length	\$40.44	-	-	▪
8645A-48	Saddle threshold, Aluminum, 4" x 1/2" (101.6 x 12.7), 48" (1219.2) length	\$53.92	-	-	
8645A-72	Saddle threshold, Aluminum, 4" x 1/2" (101.6 x 12.7), 72" (1828.8) length	\$80.88	-	-	▪
8645BK-36	Saddle threshold, Black anodized, 4" x 1/2" (101.6 x 12.7), 36" (914.4) length	\$73.67	-	-	▪
8645BK-48	Saddle threshold, Black anodized, 4" x 1/2" (101.6 x 12.7), 48" (1219.2) length	\$98.23	-	-	
8645BK-72	Saddle threshold, Black anodized, 4" x 1/2" (101.6 x 12.7), 72" (1828.8) length	\$147.35	-	-	
8645D-36	Saddle threshold, Dark bronze anodized, 4" x 1/2" (101.6 x 12.7), 36" (914.4) length	\$58.78	-	-	
8645D-48	Saddle threshold, Dark bronze anodized, 4" x 1/2" (101.6 x 12.7), 48" (1219.2) length	\$78.38	-	-	
8645D-72	Saddle threshold, Dark bronze anodized, 4" x 1/2" (101.6 x 12.7), 72" (1828.8) length	\$117.56	-	-	
8654A-36	Saddle threshold, Aluminum, 5" x 1/4" (127 x 6.35), 36" (914.4) length	\$49.38	-	-	▪
8654A-48	Saddle threshold, Aluminum, 5" x 1/4" (127 x 6.35), 48" (1219.2) length	\$65.84	-	-	
8654A-72	Saddle threshold, Aluminum, 5" x 1/4" (127 x 6.35), 72" (1828.8) length	\$98.75	-	-	
8654BK-36	Saddle threshold, Black anodized, 5" x 1/4" (127 x 6.35), 36" (914.4) length	\$101.89	-	-	▪
8654BK-48	Saddle threshold, Black anodized, 5" x 1/4" (127 x 6.35), 48" (1219.2) length	\$135.85	-	-	
8654BK-72	Saddle threshold, Black anodized, 5" x 1/4" (127 x 6.35), 72" (1828.8) length	\$203.78	-	-	
8654D-36	Saddle threshold, Dark bronze anodized, 5" x 1/4" (127 x 6.35), 36" (914.4) length	\$76.81	-	-	

1. Supplied without mounting holes.

Special anchors available for mounting most thresholds on concrete surfaces.

Stocked FastTrack products will ship in 5 business days or less when ordered through FastTrack. The FastTrack ordering process does not apply to Canada. Items in Bold indicate new Zero products (available as of Q3 2025).



THRESHOLDS

AUTOMATIC DOOR BOTTOMS

PERIMETER SEALS

WEATHERSTRIPPING

SOLUTIONS & SPECIALTY PRODUCTS

PARTS

THRESHOLDS		LIST PRICE			FastTrack
Part No.	Description	Each	Per Foot	Per Meter	Stocked
8654D-48	Saddle threshold, Dark bronze anodized, 5" x 1/4" (127 x 6.35), 48" (1219.2) length	\$102.41	-	-	
8654D-72	Saddle threshold, Dark bronze anodized, 5" x 1/4" (127 x 6.35), 72" (1828.8) length	\$153.62	-	-	
8655A	Handicap threshold, Aluminum, 5" (127)	-	\$18.56	\$60.89	▪
8655BK	Handicap threshold, Black anodized, 5" (127)	-	\$27.90	\$91.54	
8655D	Handicap threshold, Dark bronze anodized, 5" (127)	-	\$26.71	\$87.63	
8655G	Handicap threshold, Gold anodized, 5" (127)	-	\$29.08	\$95.41	
8664A-36	Saddle threshold, Aluminum, 6" x 1/4" (152.4 x 6.35), 36" (914.4) length	\$62.70	-	-	▪
8664A-48	Saddle threshold, Aluminum, 6" x 1/4" (152.4 x 6.35), 48" (1219.2) length	\$83.60	-	-	
8664A-72	Saddle threshold, Aluminum, 6" x 1/4" (152.4 x 6.35), 72" (1828.8) length	\$125.40	-	-	
8664BK-36	Saddle threshold, Black anodized, 6" x 1/4" (152.4 x 6.35), 36" (914.4) length	\$100.32	-	-	▪
8664BK-48	Saddle threshold, Black anodized, 6" x 1/4" (152.4 x 6.35), 48" (1219.2) length	\$133.76	-	-	
8664BK-72	Saddle threshold, Black anodized, 6" x 1/4" (152.4 x 6.35), 72" (1828.8) length	\$200.64	-	-	
8664D-36	Saddle threshold, Dark bronze anodized, 6" x 1/4" (152.4 x 6.35), 36" (914.4) length	\$84.65	-	-	
8664D-48	Saddle threshold, Dark bronze anodized, 6" x 1/4" (152.4 x 6.35), 48" (1219.2) length	\$112.86	-	-	
8664D-72	Saddle threshold, Dark bronze anodized, 6" x 1/4" (152.4 x 6.35), 72" (1828.8) length	\$169.29	-	-	
8665A-36	Saddle threshold, Aluminum, 6" x 1/4" (152.4 x 6.35), 36" (914.4) length	\$59.57	-	-	▪
8665A-48	Saddle threshold, Aluminum, 6" x 1/2" (152.4 x 12.7), 48" (1219.2) length	\$79.42	-	-	
8665A-72	Saddle threshold, Aluminum, 6" x 1/2" (152.4 x 12.7), 72" (1828.8) length	\$119.13	-	-	
8665BK-36	Saddle threshold, Black anodized, 6" x 1/2" (152.4 x 12.7), 36" (914.4) length	\$106.59	-	-	▪
8665BK-48	Saddle threshold, Black anodized, 6" x 1/2" (152.4 x 12.7), 48" (1219.2) length	\$142.12	-	-	
8665BK-72	Saddle threshold, Black anodized, 6" x 1/2" (152.4 x 12.7), 72" (1828.8) length	\$213.18	-	-	
8665D-36	Saddle threshold, Dark bronze anodized, 6" x 1/2" (152.4 x 12.7), 36" (914.4) length	\$84.65	-	-	
8665D-48	Saddle threshold, Dark bronze anodized, 6" x 1/2" (152.4 x 12.7), 48" (1219.2) length	\$112.86	-	-	
8665D-72	Saddle threshold, Dark bronze anodized, 6" x 1/2" (152.4 x 12.7), 72" (1828.8) length	\$169.29	-	-	

1. Supplied without mounting holes.
Special anchors available for mounting most thresholds on concrete surfaces.

HALF THRESHOLDS		LIST PRICE		FastTrack
Part No.	Description	Per Foot	Per Meter	Stocked
15B ¹	Butt threshold, Bronze, 1.4" (35.6)	\$59.80	\$196.19	
304A	Butt threshold, Aluminum, 1-1/2" (38.1) wide	\$11.37	\$37.30	
304BK	Butt threshold, Black anodized, 1-1/2" (38.1) wide	\$17.26	\$56.63	
304D	Butt threshold, Dark bronze anodized, 1-1/2" (38.1) wide	\$16.53	\$54.23	
304G	Butt threshold, Gold anodized, 1-1/2" (38.1) wide	\$17.98	\$58.99	
523A	Butt threshold, Aluminum, 3" (76.2)	\$25.79	\$84.61	
523BK	Butt threshold, Black anodized, 3" (76.2)	\$39.12	\$128.35	
523D	Butt threshold, Dark bronze anodized, 3" (76.2)	\$37.48	\$122.97	
523G	Butt threshold, Gold anodized, 3" (76.2)	\$40.76	\$133.73	
524A	Butt threshold, neoprene, Aluminum, 3" (76.2)	\$29.53	\$96.88	
524BK	Butt threshold, neoprene, Black anodized, 3" (76.2)	\$44.75	\$146.82	
524D	Butt threshold, neoprene, Dark bronze anodized, 3" (76.2)	\$42.88	\$140.68	
524G	Butt threshold, neoprene, Gold anodized, 3" (76.2)	\$46.64	\$153.02	
622A	Butt threshold, Aluminum, 2" (50.8)	\$11.76	\$38.58	
622BK	Butt threshold, Black anodized, 2" (50.8)	\$17.65	\$57.91	

1. Supplied without mounting holes.
Special anchors available for mounting most thresholds on concrete surfaces.

Stocked FastTrack products will ship in 5 business days or less when ordered through FastTrack. The FastTrack ordering process does not apply to Canada. Items in Bold indicate new Zero products (available as of Q3 2025).



HALF THRESHOLDS		LIST PRICE		FastTrack
Part No.	Description	Per Foot	Per Meter	Stocked
622D	Butt threshold, Dark bronze anodized, 2" (50.8)	\$16.91	\$55.48	
622G	Butt threshold, Gold anodized, 2" (50.8)	\$18.41	\$60.40	
622PVC	Thermal break connector, PVC, 0.45' x 0.49"	\$4.36	\$14.30	
623A	Butt threshold, Aluminum, 3" (76.2)	\$16.69	\$54.76	
623BK	Butt threshold, Black anodized, 3" (76.2)	\$25.15	\$82.51	
623D	Butt threshold, Dark bronze anodized, 3" (76.2)	\$24.08	\$79.00	
623G	Butt threshold, Gold anodized, 3" (76.2)	\$26.21	\$85.99	
627A	Neoprene, Aluminum, 2" (50.8) wide	\$14.53	\$47.67	
627BK	Neoprene, Black anodized, 2" (50.8) wide	\$21.65	\$71.03	
627D	Neoprene, Dark bronze anodized, 2" (50.8) wide	\$20.75	\$68.08	
627G	Neoprene, Gold anodized, 2" (50.8) wide	\$22.56	\$74.02	
628A	Neoprene, Aluminum, 3" (76.2) wide	\$19.34	\$63.45	
628BK	Neoprene, Black anodized, 3" (76.2) wide	\$28.98	\$95.08	
628D	Neoprene, Dark bronze anodized, 3" (76.2) wide	\$27.77	\$91.11	
628G	Neoprene, Gold anodized, 3" (76.2) wide	\$30.21	\$99.11	
1545A	Butt threshold, Aluminum, 2-1/2" (63.5)	\$12.76	\$41.86	
1545BK	Butt threshold, Black anodized, 2-1/2" (63.5)	\$43.64	\$143.18	
1545D	Butt threshold, Dark bronze anodized, 2-1/2" (63.5)	\$41.75	\$136.98	
1545G	Butt threshold, Gold anodized, 2-1/2" (63.5)	\$45.51	\$149.31	
1545B	Butt threshold, Bronze, 2-1/2" (63.5)	\$75.96	\$249.21	
1673A	Butt threshold, Aluminum, 3" x 1/2" (76.2 x 12.7)	\$23.83	\$78.18	
1673BK	Butt threshold, Black anodized, 3" x 1/2" (76.2 x 12.7)	\$35.51	\$116.50	
1673D	Butt threshold, Dark bronze anodized, 3" x 1/2" (76.2 x 12.7)	\$33.99	\$111.52	
1673G	Butt threshold, Gold anodized, 3" x 1/2" (76.2 x 12.7)	\$37.02	\$121.46	
1674A	Threshold, one side beveled, Aluminum, 4" x 1/2" (101.6 x 12.7)	\$33.61	\$110.27	
1674BK	Threshold, one side beveled, Black anodized, 4" x 1/2" (101.6 x 12.7)	\$50.01	\$164.07	
1674D	Threshold, one side beveled, Dark bronze anodized, 4" x 1/2" (101.6 x 12.7)	\$47.87	\$157.05	
1674G	Threshold, one side beveled, Gold anodized, 4" x 1/2" (101.6 x 12.7)	\$52.15	\$171.10	
1675A	Threshold, one side beveled, Aluminum, 5" x 1/2" (127.0 x 12.7)	\$38.78	\$127.23	
1675BK	Threshold, one side beveled, Black anodized, 5" x 1/2" (127.0 x 12.7)	\$57.58	\$188.91	
1675D	Threshold, one side beveled, Dark bronze anodized, 5" x 1/2" (127.0 x 12.7)	\$55.12	\$180.84	
1675G	Threshold, one side beveled, Gold anodized, 5" x 1/2" (127.0 x 12.7)	\$60.04	\$196.98	

1. Supplied without mounting holes.
Special anchors available for mounting most thresholds on concrete surfaces.

CARPET DIVIDER THRESHOLDS		LIST PRICE		FastTrack
Part No.	Description	Per Foot	Per Meter	Stocked
522A	Threshold, Aluminum, 1/2" (12.7) high	\$11.76	\$38.58	
522BK	Threshold, Black anodized, 1/2" (12.7) high	\$17.84	\$58.53	
522D	Threshold, Dark bronze anodized, 1/2" (12.7) high	\$17.09	\$56.07	
522G	Threshold, Gold anodized, 1/2" (12.7) high	\$18.62	\$61.09	
643A	Carpet divider, Aluminum, 3" (76.2) wide	\$19.75	\$64.80	
643BK	Carpet divider, Black anodized, 3" (76.2) wide	\$29.64	\$97.24	
643D	Carpet divider, Dark bronze anodized, 3" (76.2) wide	\$28.39	\$93.14	

1. Supplied without mounting holes.
Special anchors available for mounting most thresholds on concrete surfaces.

Stocked FastTrack products will ship in 5 business days or less when ordered through FastTrack. The FastTrack ordering process does not apply to Canada. Items in Bold indicate new Zero products (available as of Q3 2025).

THRESHOLDS

AUTOMATIC DOOR BOTTOMS

PERIMETER SEALS

WEATHERSTRIPPING

SOLUTIONS & SPECIALTY PRODUCTS

PARTS



THRESHOLDS

AUTOMATIC DOOR BOTTOMS

PERIMETER SEALS

WEATHERSTRIPPING

SOLUTIONS & SPECIALTY PRODUCTS

PARTS

CARPET DIVIDER THRESHOLDS		LIST PRICE		FastTrack
Part No.	Description	Per Foot	Per Meter	Stocked
643G	Carpet divider, Gold anodized, 3" (76.2) wide	\$30.90	\$101.38	
1682A	Carpet divider threshold, Aluminum, 1-3/4" (44.5)	\$11.88	\$38.98	
1682BK	Carpet divider threshold, Black anodized, 1-3/4" (44.5)	\$17.74	\$58.20	
1682D	Carpet divider threshold, Dark bronze anodized, 1-3/4" (44.5)	\$16.98	\$55.71	
1682G	Carpet divider threshold, Gold anodized, 1-3/4" (44.5)	\$18.49	\$60.66	
1682B	Carpet divider threshold, Bronze, 1-3/4" x 1/2" (44.5 x 12.7)	\$66.24	\$217.32	
1684A	Carpet divider, Aluminum, 4" (101.6)	\$26.52	\$87.01	
1684BK	Carpet divider, Black anodized, 4" (101.6)	\$40.37	\$132.45	
1684D	Carpet divider, Dark bronze anodized, 4" (101.6)	\$38.64	\$126.77	
1684G	Carpet divider, Gold anodized, 4" (101.6)	\$42.10	\$138.12	
1685R ¹	Carpet divider threshold, rubber, 2.5" (63.5)	\$39.95	\$131.07	
1686R ¹	Carpet divider threshold, rubber, 1.813" (46.1)	\$39.95	\$131.07	

1. Supplied without mounting holes.
Special anchors available for mounting most thresholds on concrete surfaces.

OFFSET & RABBETED THRESHOLDS		LIST PRICE		FastTrack
Part number	Description	Per Foot	Per Meter	Stocked
65A	Threshold, silicone stop, Aluminum, 5" x 1/2" (127.0 x 12.7)	\$30.31	\$99.44	▪
65B	Threshold, silicone stop, Bronze, 5" x 1/2" (127.0 x 12.7)	\$194.94	\$639.57	
65BK	Threshold, silicone stop, Black anodized, 5" x 1/2" (127.0 x 12.7)	\$45.58	\$149.54	
65D	Threshold, silicone stop, Dark bronze anodized, 5" x 1/2" (127.0 x 12.7)	\$43.68	\$143.31	
65G	Threshold, silicone stop, Gold anodized, 5" x 1/2" (127.0 x 12.7)	\$47.50	\$155.84	
102A ¹	Offset threshold, Aluminum, 5-1/2" (139.7)	\$23.03	\$75.56	
102BK ¹	Offset threshold, Black anodized, 5-1/2" (139.7)	\$34.68	\$113.78	
102D ¹	Offset threshold, Dark bronze anodized, 5-1/2" (139.7)	\$33.19	\$108.89	
102G ¹	Offset threshold, Gold anodized, 5-1/2" (139.7)	\$36.14	\$118.57	
103A ¹	Offset threshold, Aluminum, 7" (177.8)	\$29.44	\$96.59	
103BK ¹	Offset threshold, Black anodized, 7" (177.8)	\$44.04	\$144.49	
103D ¹	Offset threshold, Dark bronze anodized, 7" (177.8)	\$42.19	\$138.42	
103G ¹	Offset threshold, Gold anodized, 7" (177.8)	\$45.87	\$150.49	
104A ¹	Offset threshold, Aluminum, 6" (152.4)	\$26.56	\$87.14	
104BK ¹	Offset threshold, Black anodized, 6" (152.4)	\$39.84	\$130.71	
104D ¹	Offset threshold, Dark bronze anodized, 6" (152.4)	\$38.12	\$125.07	
104G ¹	Offset threshold, Gold anodized, 6" (152.4)	\$41.52	\$136.22	
265A	Neoprene stop, Aluminum, 5" (127.0)	\$27.54	\$90.35	
265BK	Neoprene stop, Black anodized, 5" (127.0)	\$41.42	\$135.89	
265D	Neoprene stop, Dark bronze anodized, 5" (127.0)	\$39.70	\$130.25	
265G	Neoprene stop, Gold anodized, 5" (127.0)	\$43.16	\$141.60	
267A	Neoprene stop, Aluminum, 2.155" (54.7)	\$22.23	\$72.93	
267BK	Neoprene stop, Black anodized, 2.155" (54.7)	\$33.89	\$111.19	
267D	Neoprene stop, Dark bronze anodized, 2.155" (54.7)	\$32.46	\$106.50	
267G	Neoprene stop, Gold anodized, 2.155" (54.7)	\$35.30	\$115.81	
560A	Rabbeted threshold, neoprene, Aluminum, 5" x 7/8" (127.0 x 22.2)	\$29.75	\$97.60	
560BK	Rabbeted threshold, neoprene, Black anodized, 5" x 7/8" (127.0 x 22.2)	\$44.83	\$147.08	

1. Supplied without mounting holes.
Special anchors available for mounting most thresholds on concrete surfaces.

Stocked FastTrack products will ship in 5 business days or less when ordered through FastTrack. The FastTrack ordering process does not apply to Canada. Items in Bold indicate new Zero products (available as of Q3 2025).



OFFSET & RABBETED THRESHOLDS		LIST PRICE		FastTrack
Part number	Description	Per Foot	Per Meter	Stocked
560D	Rabbeted threshold, neoprene, Dark bronze anodized, 5" x 7/8" (127.0 x 22.2)	\$42.91	\$140.78	
560G	Rabbeted threshold, neoprene, Gold anodized, 5" x 7/8" (127.0 x 22.2)	\$46.75	\$153.38	
561A	Rabbeted threshold, neoprene, Aluminum, 4-1/2" x 1" (114.3 x 25.4)	\$32.46	\$106.50	
561BK	Rabbeted threshold, neoprene, Black anodized, 4-1/2" x 1" (114.3 x 25.4)	\$48.88	\$160.37	
561D	Rabbeted threshold, neoprene, Dark bronze anodized, 4-1/2" x 1" (114.3 x 25.4)	\$46.83	\$153.64	
561G	Rabbeted threshold, neoprene, Gold anodized, 4-1/2" x 1" (114.3 x 25.4)	\$50.93	\$167.09	
563A	Rabbeted threshold, neoprene, Aluminum, 3-9/16" x 7/8" (90.4 x 22.2)	\$24.10	\$79.07	
563BK	Rabbeted threshold, neoprene, Black anodized, 3-9/16" x 7/8" (90.4 x 22.2)	\$35.96	\$117.98	
563D	Rabbeted threshold, neoprene, Dark bronze anodized, 3-9/16" x 7/8" (90.4 x 22.2)	\$34.45	\$113.02	
563G	Rabbeted threshold, neoprene, Gold anodized, 3-9/16" x 7/8" (90.4 x 22.2)	\$37.47	\$122.93	
564A	Rabbeted threshold, neoprene, Aluminum, 3-11/16" x 1/2" (84.9 x 12.7)	\$17.55	\$57.58	
564B	Rabbeted threshold, neoprene, Bronze, 3-11/16" x 1/2" (84.9 x 12.7)	\$96.73	\$317.36	
564BK	Rabbeted threshold, neoprene, Black anodized, 3-11/16" x 1/2" (84.9 x 12.7)	\$26.85	\$88.09	
564D	Rabbeted threshold, neoprene, Dark bronze anodized, 3-11/16" x 1/2" (84.9 x 12.7)	\$25.72	\$84.38	
564G	Rabbeted threshold, neoprene, Gold anodized, 3-11/16" x 1/2" (84.9 x 12.7)	\$27.97	\$91.77	
565A	Rabbeted threshold, neoprene stop, Aluminum, 4-7/8" x 7/8" (123.8 x 22.2)	\$38.70	\$126.97	
565B	Rabbeted threshold, neoprene stop, Bronze, 4-7/8" x 7/8" (123.8 x 22.2)	\$225.57	\$740.06	
565BK	Rabbeted threshold, neoprene stop, Black anodized, 4-7/8" x 7/8" (123.8 x 22.2)	\$57.45	\$188.48	
565D	Rabbeted threshold, neoprene stop, Dark bronze anodized, 4-7/8" x 7/8" (123.8 x 22.2)	\$54.99	\$180.41	
565G	Rabbeted threshold, neoprene stop, Gold anodized, 4-7/8" x 7/8" (123.8 x 22.2)	\$59.90	\$196.52	
566A	Rabbeted threshold, neoprene stop, Aluminum, 5" x 1/2" (127.0 x 12.7)	\$24.65	\$80.87	▪
566BK	Rabbeted threshold, neoprene stop, Black anodized, 5" x 1/2" (127.0 x 12.7)	\$36.54	\$119.88	
566D	Rabbeted threshold, neoprene stop, Dark bronze anodized, 5" x 1/2" (127.0 x 12.7)	\$35.01	\$114.86	
566G	Rabbeted threshold, neoprene stop, Gold anodized, 5" x 1/2" (127.0 x 12.7)	\$38.07	\$124.90	
567B	Neoprene stop, Bronze, 1/2" (12.7) high	\$101.18	\$331.96	
568A	Rabbeted threshold, Aluminum, 1/2" x 6" (12.7 x 152.4)	\$28.29	\$92.81	
568BK	Rabbeted threshold, Black anodized, 1/2" x 6" (12.7 x 152.4)	\$42.43	\$139.21	
568D	Rabbeted threshold, Dark bronze anodized, 1/2" x 6" (12.7 x 152.4)	\$40.64	\$133.33	
568G	Rabbeted threshold, Gold anodized, 1/2" x 6" (12.7 x 152.4)	\$44.21	\$145.05	
663A ¹	Threshold, Aluminum, 3" (76.2) wide	\$15.13	\$49.64	
663BK ¹	Threshold, Black anodized, 3" (76.2) wide	\$23.18	\$76.05	
663D ¹	Threshold, Dark bronze anodized, 3" (76.2) wide	\$22.20	\$72.83	
663G ¹	Threshold, Gold anodized, 3" (76.2) wide	\$24.17	\$79.30	

1. Supplied without mounting holes.
Special anchors available for mounting most thresholds on concrete surfaces.

INTERLOCKING/ADJUSTABLE INTERLOCKING BRONZE THRESHOLD SYSTEMS		LIST PRICE		FastTrack
Part No.	Description	Per Foot	Per Meter	Stocked
70B	Threshold, Bronze, 3" (76.2)	\$97.27	\$319.13	
73A	Neoprene stop, Aluminum, 4" (101.6)	\$23.21	\$76.15	
73BK	Neoprene stop, Black anodized, 4" (101.6)	\$35.34	\$115.94	
73D	Neoprene stop, Dark bronze anodized, 4" (101.6)	\$33.86	\$111.09	
73G	Neoprene stop, Gold anodized, 4" (101.6)	\$36.82	\$120.80	
76B	Water return option, Bronze, 3-1/2" (88.9)	\$147.00	\$482.28	
80B	Bronze, 4-1/4" (108.0)	\$131.78	\$432.35	

Special anchors available for mounting most thresholds on concrete surfaces.

Stocked FastTrack products will ship in 5 business days or less when ordered through FastTrack. The FastTrack ordering process does not apply to Canada. Items in Bold indicate new Zero products (available as of Q3 2025).

THRESHOLDS

AUTOMATIC DOOR BOTTOMS

PERIMETER SEALS

WEATHERSTRIPPING

SOLUTIONS & SPECIALTY PRODUCTS

PARTS



THRESHOLDS

AUTOMATIC DOOR BOTTOMS

PERIMETER SEALS

WEATHERSTRIPPING

SOLUTIONS & SPECIALTY PRODUCTS

PARTS

INTERLOCKING/ADJUSTABLE INTERLOCKING BRONZE THRESHOLD SYSTEMS		LIST PRICE		FastTrack
Part No.	Description	Per Foot	Per Meter	Stocked
175A	Water return option, Aluminum, 5" (127.0)	\$27.82	\$91.27	
175B	Water return option, Bronze, 5" (127.0)	\$172.02	\$564.37	
175BK	Water return option, Black anodized, 5" (127.0)	\$41.89	\$137.43	
175D	Water return option, Dark bronze anodized, 5" (127.0)	\$40.16	\$131.76	
175G	Water return option, Gold anodized, 5" (127.0)	\$43.68	\$143.31	
7000B	Adjustable interlocking with #7336 or 7337, Bronze	\$174.55	\$572.67	
7332B	Interlocking - extension leg, Bronze	\$87.29	\$286.38	
7334B	Adjustable interlocking, Bronze, 4" (101.6)	\$174.69	\$573.13	
7335B	Adjustable interlocking, Bronze, 5" (127)	\$218.34	\$716.34	
7338B	Adjustable interlocking thermal break, Bronze	\$333.36	\$1,093.70	

Special anchors available for mounting most thresholds on concrete surfaces.

THERMAL BREAK THRESHOLDS		LIST PRICE		FastTrack
Part No.	Description	Per Foot	Per Meter	Stocked
525A	Thermal break threshold, neoprene, Aluminum, 5" (127.0)	\$42.18	\$138.39	
525BK	Thermal break threshold, neoprene, Black anodized, 5" (127.0)	\$61.24	\$200.92	
525D	Thermal break threshold, neoprene, Dark bronze anodized, 5" (127.0)	\$58.64	\$192.39	
525G	Thermal break threshold, neoprene, Gold anodized, 5" (127.0)	\$63.87	\$209.55	
526A	Thermal break threshold, neoprene, Aluminum, 6" (152.4)	\$47.25	\$155.02	
526BK	Thermal break threshold, neoprene, Black anodized, 6" (152.4)	\$68.90	\$226.05	
526D	Thermal break threshold, neoprene, Dark bronze anodized, 6" (152.4)	\$66.02	\$216.60	
526G	Thermal break threshold, neoprene, Gold anodized, 6" (152.4)	\$71.80	\$235.56	
624A	Thermal break, Aluminum, 4" (101.6)	\$26.04	\$85.43	
624BK	Thermal break, Black anodized, 4" (101.6)	\$39.00	\$127.95	
624D	Thermal break, Dark bronze anodized, 4" (101.6)	\$37.35	\$122.54	
624G	Thermal break, Gold anodized, 4" (101.6)	\$40.62	\$133.27	
625A	Thermal break, Aluminum, 5" (127.0)	\$30.38	\$99.67	•
625BK	Thermal break, Black anodized, 5" (127.0)	\$45.37	\$148.85	
625D	Thermal break, Dark bronze anodized, 5" (127.0)	\$43.43	\$142.49	
625G	Thermal break, Gold anodized, 5" (127.0)	\$47.28	\$155.12	
626A	Thermal break, Aluminum, 6" (152.4)	\$34.59	\$113.48	
626BK	Thermal break, Black anodized, 6" (152.4)	\$51.99	\$170.57	
626D	Thermal break, Dark bronze anodized, 6" (152.4)	\$49.78	\$163.32	
626G	Thermal break, Gold anodized, 6" (152.4)	\$54.21	\$177.85	
8724A	Thermal break, Aluminum, 5-5/8" (142.9)	\$41.25	\$135.33	
8724BK	Thermal break, Black anodized, 5-5/8" (142.9)	\$62.36	\$204.59	
8724D	Thermal break, Dark bronze anodized, 5-5/8" (142.9)	\$59.73	\$195.96	
8724G	Thermal break, Gold anodized, 5-5/8" (142.9)	\$64.99	\$213.22	
8726A	Thermal break, Aluminum, 7-5/8" (193.7)	\$49.91	\$163.75	
8726BK	Thermal break, Black anodized, 7-5/8" (193.7)	\$73.70	\$241.80	
8726D	Thermal break, Dark bronze anodized, 7-5/8" (193.7)	\$70.62	\$231.69	
8726G	Thermal break, Gold anodized, 7-5/8" (193.7)	\$76.80	\$251.97	
8729A	Thermal break, neoprene, Aluminum, 6-5/8" (168.3)	\$55.60	\$182.41	
8729BK	Thermal break, neoprene, Black anodized, 6-5/8" (168.3)	\$81.91	\$268.73	

Special anchors available for mounting most thresholds on concrete surfaces.

Width dimensions for thresholds on this page are nominal. Slight variations may result from thermal break manufacturing.

Stocked FastTrack products will ship in 5 business days or less when ordered through FastTrack. The FastTrack ordering process does not apply to Canada. Items in Bold indicate new Zero products (available as of Q3 2025).



THERMAL BREAK THRESHOLDS		LIST PRICE		FastTrack
Part No.	Description	Per Foot	Per Meter	Stocked
8729D	Thermal break, neoprene, Dark bronze anodized, 6-5/8" (168.3)	\$78.47	\$257.45	
8729G	Thermal break, neoprene, Gold anodized, 6-5/8" (168.3)	\$85.33	\$279.95	

Special anchors available for mounting most thresholds on concrete surfaces.
 Width dimensions for thresholds on this page are nominal. Slight variations may result from thermal break manufacturing.

ADJUSTABLE THRESHOLDS		LIST PRICE		FastTrack
Part No.	Description	Per Foot	Per Meter	Stocked
48A	Plate, Aluminum, 3/16" x 1-1/2" (4.7 x 38.1)	\$13.25	\$43.47	
49A	Plate, Aluminum, 1/8" x 1-3/4" (3.2 x 44.5)	\$14.64	\$48.03	
68A ¹	Threshold rest, Aluminum, 1/2" (12.7)	\$10.17	\$33.37	
68B ¹	Threshold rest, Bronze, 1/2" (12.7)	\$48.76	\$159.97	
68BK ¹	Threshold rest, Black anodized, 1/2" (12.7)	\$15.47	\$50.75	
68D ¹	Threshold rest, Dark bronze anodized, 1/2" (12.7)	\$14.80	\$48.56	
68G ¹	Threshold rest, Gold anodized, 1/2" (12.7)	\$16.15	\$52.99	
69A ¹	Plate, Aluminum, 1/4" x 1-1/8" (6.4 x 28.6)	\$9.80	\$32.15	
69BK ¹	Plate, Black anodized, 1/4" x 1-1/8" (6.4 x 28.6)	\$14.92	\$48.95	
69D ¹	Plate, Dark bronze anodized, 1/4" x 1-1/8" (6.4 x 28.6)	\$14.28	\$46.85	
69G ¹	Plate, Gold anodized, 1/4" x 1-1/8" (6.4 x 28.6)	\$15.55	\$51.02	
84R-PSA	Traction tread neoprene with PSA, 1" x 1/4" (25.4 x 6.4)	\$10.61	\$34.81	
105A ¹	Bulkhead door threshold, Aluminum, 3" (76.2)	\$25.91	\$85.01	
105BK ¹	Bulkhead door threshold, Black anodized, 3" (76.2)	\$38.87	\$127.53	
105D ¹	Bulkhead door threshold, Dark bronze anodized, 3" (76.2)	\$37.25	\$122.21	
105G ¹	Bulkhead door threshold, Gold anodized, 3" (76.2)	\$40.53	\$132.97	
106A ¹	Bulkhead door threshold, Aluminum, 3/4" (19.1)	\$19.00	\$62.34	
106BK ¹	Bulkhead door threshold, Black anodized, 3/4" (19.1)	\$28.42	\$93.24	
106D ¹	Bulkhead door threshold, Dark Bronze anodized, 3/4" (19.1)	\$27.22	\$89.30	
106G ¹	Bulkhead door threshold, Gold anodized, 3/4" (19.1)	\$29.61	\$97.15	
107B ¹	Bulkhead door threshold, Bronze, 1-7/8" (47.6)	\$107.20	\$351.71	
168A ¹	Threshold rest, Aluminum, 3/4" (19.1)	\$17.44	\$57.22	
168B ¹	Threshold rest, Bronze, 3/4" (19.1)	\$57.83	\$189.73	
168BK ¹	Threshold rest, Black anodized, 3/4" (19.1)	\$26.32	\$86.35	
168D ¹	Threshold rest, Dark bronze anodized, 3/4" (19.1)	\$25.23	\$82.78	
168G ¹	Threshold rest, Gold anodized, 3/4" (19.1)	\$27.44	\$90.03	
268A ¹	Threshold rest, Aluminum, 3/8" (9.5)	\$9.07	\$29.76	
268B ¹	Threshold rest, Bronze, 3/8" (9.5)	\$45.16	\$148.16	
268BK ¹	Threshold rest, Black anodized, 3/8" (9.5)	\$13.79	\$45.24	
268D ¹	Threshold rest, Dark bronze anodized, 3/8" (9.5)	\$13.19	\$43.27	
268G ¹	Threshold rest, Gold anodized, 3/8" (9.5)	\$14.36	\$47.11	
269A ¹	Assembly connector, Aluminum, 1/2" (12.7)	\$11.11	\$36.45	
469A ¹	Assembly connector, Aluminum, 3/8" (9.5)	\$8.86	\$29.07	
672A ¹	Plate, Aluminum, 2" (50.8) wide	\$14.39	\$47.21	
672BK ¹	Plate, Black anodized, 2" (50.8) wide	\$21.51	\$70.57	
672D ¹	Plate, Dark bronze anodized, 2" (50.8) wide	\$20.60	\$67.59	
672G ¹	Plate, Gold anodized, 2" (50.8) wide	\$22.41	\$73.52	

1. Supplied without mounting holes.
 Special anchors available for mounting most thresholds on concrete surfaces. Suitable for use as recessed expansion joint floor plate for ADA openings.

Stocked FastTrack products will ship in 5 business days or less when ordered through FastTrack. The FastTrack ordering process does not apply to Canada.
 Items in Bold indicate new Zero products (available as of Q3 2025).

THRESHOLDS
AUTOMATIC DOOR BOTTOMS
PERIMETER SEALS
WEATHERSTRIPPING
SOLUTIONS & SPECIALTY PRODUCTS
PARTS



THRESHOLDS

AUTOMATIC DOOR BOTTOMS

PERIMETER SEALS

WEATHERSTRIPPING

SOLUTIONS & SPECIALTY PRODUCTS

PARTS

ADJUSTABLE THRESHOLDS		LIST PRICE		FastTrack
Part No.	Description	Per Foot	Per Meter	Stocked
673A ¹	Plate, Aluminum, 3" (76.2) wide	\$20.96	\$68.77	
673B ¹	Plate, Bronze, 3" (76.2) wide	\$109.88	\$360.50	
673BK ¹	Plate, Black anodized, 3" (76.2) wide	\$31.74	\$104.13	
673D ¹	Plate, Dark bronze anodized, 3" (76.2) wide	\$30.42	\$99.80	
673G ¹	Plate, Gold anodized, 3" (76.2) wide	\$33.07	\$108.50	
674A ¹	Plate, Aluminum, 4" (101.6) wide	\$28.40	\$93.18	
674B ¹	Plate, Bronze, 4" (101.6) wide	\$153.90	\$504.92	
674BK ¹	Plate, Black anodized, 4" (101.6) wide	\$42.56	\$139.63	
674D ¹	Plate, Dark bronze anodized, 4" (101.6) wide	\$40.78	\$133.79	
674G ¹	Plate, Gold anodized, 4" (101.6) wide	\$44.37	\$145.57	
675A ¹	Plate, Aluminum, 5" (127.0) wide	\$33.84	\$111.02	
675BK ¹	Plate, Black anodized, 5" (127.0) wide	\$50.44	\$165.49	
675D ¹	Plate, Dark bronze anodized, 5" (127.0) wide	\$48.32	\$158.53	
675G ¹	Plate, Gold anodized, 5" (127.0) wide	\$52.56	\$172.44	
676A ¹	Plate, Aluminum, 6" (152.4) wide	\$40.92	\$134.25	
676B ¹	Plate, Bronze, 6" (152.4) wide	\$300.21	\$984.94	
676BK ¹	Plate, Black anodized, 6" (152.4) wide	\$61.62	\$202.17	
676D ¹	Plate, Dark bronze anodized, 6" (152.4) wide	\$59.02	\$193.64	
676G ¹	Plate, Gold anodized, 6" (152.4) wide	\$64.20	\$210.63	
678A ¹	Plate, Aluminum, 8" (203.2) wide	\$56.60	\$185.70	
678BK ¹	Plate, Black anodized, 8" (203.2) wide	\$84.91	\$278.58	
678D ¹	Plate, Dark bronze anodized, 8" (203.2) wide	\$81.33	\$266.83	
678G ¹	Plate, Gold anodized, 8" (203.2) wide	\$88.47	\$290.26	
2673A ¹	Traction tread nosing, rubber, Aluminum, 3" (76.2)	\$41.91	\$137.50	
2673B ¹	Traction tread nosing, rubber, Bronze, 3" (76.2)	\$172.24	\$565.09	
2673BK ¹	Traction tread nosing, rubber, Black anodized, 3" (76.2)	\$63.07	\$206.92	
2673D ¹	Traction tread nosing, rubber, Dark bronze anodized, 3" (76.2)	\$60.43	\$198.26	
2673G ¹	Traction tread nosing, rubber, Gold anodized, 3" (76.2)	\$65.73	\$215.65	
2676A ¹	Traction tread nosing, rubber, Aluminum, 6" (152.4)	\$78.98	\$259.12	
2676BK ¹	Traction tread nosing, rubber, Black anodized, 6" (152.4)	\$117.02	\$383.92	
2676D ¹	Traction tread nosing, rubber, Dark bronze anodized, 6" (152.4)	\$112.11	\$367.81	
2676G ¹	Traction tread nosing, rubber, Gold anodized, 6" (152.4)	\$121.95	\$400.10	
3672A ¹	Traction tread plate, rubber, Aluminum, 2" (50.8)	\$25.43	\$83.43	
3672BK ¹	Traction tread plate, rubber, Black anodized, 2" (50.8)	\$37.37	\$122.60	
3672D ¹	Traction tread plate, rubber, Dark bronze anodized, 2" (50.8)	\$35.78	\$117.39	
3672G ¹	Traction tread plate, rubber, Gold anodized, 2" (50.8)	\$38.95	\$127.79	
3673A ¹	Traction tread plate, rubber insert, Aluminum, 3" (76.2)	\$37.67	\$123.59	
3673BK ¹	Traction tread plate, rubber insert, Black anodized, 3" (76.2)	\$56.49	\$185.33	
3673D ¹	Traction tread plate, rubber insert, Dark bronze anodized, 3" (76.2)	\$54.14	\$177.62	
3673G ¹	Traction tread plate, rubber insert, Gold anodized, 3" (76.2)	\$58.88	\$193.18	
3674A ¹	Traction tread plate, rubber insert, Aluminum, 4" (101.6)	\$50.39	\$165.32	
3674BK ¹	Traction tread plate, rubber insert, Black anodized, 4" (101.6)	\$74.28	\$243.70	
3674D ¹	Traction tread plate, rubber insert, Dark bronze anodized, 4" (101.6)	\$71.15	\$233.43	
3674G ¹	Traction tread plate, rubber insert, Gold anodized, 4" (101.6)	\$77.39	\$253.90	

1. Supplied without mounting holes.
 Special anchors available for mounting most thresholds on concrete surfaces. Suitable for use as recessed expansion joint floor plate for ADA openings.

Stocked FastTrack products will ship in 5 business days or less when ordered through FastTrack. The FastTrack ordering process does not apply to Canada.
 Items in Bold indicate new Zero products (available as of Q3 2025).



ADJUSTABLE THRESHOLDS		LIST PRICE		FastTrack
Part No.	Description	Per Foot	Per Meter	Stocked
3675A ¹	Traction tread plate, rubber insert, Aluminum, 5" (127.0)	\$61.66	\$202.30	
3675BK ¹	Traction tread plate, rubber insert, Black anodized, 5" (127.0)	\$92.37	\$303.05	
3675D ¹	Traction tread plate, rubber insert, Dark bronze anodized, 5" (127.0)	\$88.47	\$290.26	
3675G ¹	Traction tread plate, rubber insert, Gold anodized, 5" (127.0)	\$96.25	\$315.78	
3676A ¹	Traction tread plate, rubber, photo-luminescent tread insert, Aluminum, 6" (152.4)	\$74.27	\$243.67	
3676BK ¹	Traction tread plate, rubber, photo-luminescent tread insert, Black anodized, 6" (152.4)	\$108.08	\$354.59	
3676D ¹	Traction tread plate, rubber, photo-luminescent tread insert, Dark bronze anodized, 6" (152.4)	\$103.52	\$339.63	
3676G ¹	Traction tread plate, rubber, photo-luminescent tread insert, Gold anodized, 6" (152.4)	\$112.62	\$369.49	
3676N	Tread rubber for aluminum thresholds - extrusion, 0.24" x 0.175" (6.1 x 4.4)	\$5.02	\$16.47	
6710A ¹	Plate, Aluminum, 10" (254.0)	\$70.99	\$232.91	
6710BL ¹	Plate, Black anodized, 10" (254.0)	\$106.38	\$349.02	
6710D ¹	Plate, Dark bronze anodized, 10" (254.0)	\$101.91	\$334.35	
6710G ¹	Plate, Gold anodized, 10" (254.0)	\$110.85	\$363.68	

1. Supplied without mounting holes.

Special anchors available for mounting most thresholds on concrete surfaces. Suitable for use as recessed expansion joint floor plate for ADA openings.

RAMPS		LIST PRICE		FastTrack
Part No.	Description	Per Foot	Per Meter	Stocked
232A	Ramp, Aluminum, 6" (152.4), 1/2" x 1" (12.7 x 25.4)	\$43.11	\$141.44	
232BK	Ramp, Black anodized, 6" (152.4), 1/2" x 1" (12.7 x 25.4)	\$62.34	\$204.53	
232D	Ramp, Dark bronze anodized, 6" (152.4), 1/2" x 1" (12.7 x 25.4)	\$59.68	\$195.80	
232G	Ramp, Gold anodized, 6" (152.4), 1/2" x 1" (12.7 x 25.4)	\$65.00	\$213.25	
233A	Ramp, Aluminum, 3" (76.2)	\$20.03	\$65.72	
233BK	Ramp, Black anodized, 3" (76.2)	\$30.58	\$100.33	
233D	Ramp, Dark bronze anodized, 3" (76.2)	\$29.31	\$96.16	
233G	Ramp, Gold anodized, 3" (76.2)	\$31.88	\$104.59	
234A	Ramp, Aluminum, 3" (76.2), 1/4" x 1/2" (6.4 x 12.7)	\$20.03	\$65.72	
234BK	Ramp, Black anodized, 3" (76.2), 1/4" (6.4)	\$30.58	\$100.33	
234D	Ramp, Dark bronze anodized, 3" (76.2), 1/4" x 1/2" (6.4 x 12.7)	\$29.31	\$96.16	
234G	Ramp, Gold anodized, 3" (76.2), 1/4" (6.4)	\$31.88	\$104.59	
235A	Ramp, Aluminum, 3" (76.2), 1/4" (6.4)	\$20.03	\$65.72	
235BK	Ramp, Black anodized, 3" (76.2), 1/4" (6.4)	\$30.58	\$100.33	
235D	Ramp, Dark bronze anodized, 3" (76.2), 1/4" x 1/2" (6.4 x 12.7)	\$29.31	\$96.16	
235G	Ramp, Gold anodized, 3" (76.2), 1/4" (6.4)	\$31.88	\$104.59	
236A	Ramp, Aluminum, 6" (152.4)	\$26.01	\$85.33	
236BK	Ramp, Black anodized, 6" (152.4)	\$39.83	\$130.68	
236D	Ramp, Dark bronze anodized, 6" (152.4)	\$38.11	\$125.03	
236G	Ramp, Gold anodized, 6" (152.4)	\$41.51	\$136.19	
237A	Ramp, Aluminum, 3-1/2" (88.9), 1/4" x 1/2" (6.4 x 12.7)	\$29.13	\$95.57	
237BK	Ramp, Black anodized, 3-1/2" (88.9), 1/4" x 1/2" (6.4 x 12.7)	\$43.33	\$142.16	
237D	Ramp, Dark bronze anodized, 3-1/2" (88.9), 1/4" x 1/2" (6.4 x 12.7)	\$41.50	\$136.15	
237G	Ramp, Gold anodized, 3-1/2" (88.9), 1/4" x 1/2" (6.4 x 12.7)	\$45.16	\$148.16	
238A	Ramp, Aluminum, 3-1/2" (88.9), 1/4" x 3/4" (6.4 x 19)	\$29.13	\$95.57	
238BK	Ramp, Black anodized, 3-1/2" (88.9), 1/4" x 3/4" (6.4 x 19)	\$43.33	\$142.16	

All ramps are supplied without mounting holes.

Special anchors available for mounting most thresholds on concrete surfaces.

Stocked FastTrack products will ship in 5 business days or less when ordered through FastTrack. The FastTrack ordering process does not apply to Canada. Items in Bold indicate new Zero products (available as of Q3 2025).



RAMPS		LIST PRICE		FastTrack
Part No.	Description	Per Foot	Per Meter	Stocked
238D	Ramp, Dark bronze anodized, 3-1/2" (88.9), 1/4" x 3/4" (6.4 x 19)	\$41.50	\$136.15	
238G	Ramp, Gold anodized, 3-1/2" (88.9), 1/4" x 3/4" (6.4 x 19)	\$45.16	\$148.16	
259R	Ramp, rubber, 6" x 1/2" (152.4 x 12.7)	\$48.30	\$158.46	
2361AA	Ramp, Clear anodized, 3.94" x 0.500" (100.1 x 12.7)	\$21.57	\$70.77	
2361BK	Ramp, Black anodized, 3.94" x 0.500" (100.1 x 12.7)	\$32.23	\$105.74	
2361D	Ramp, Dark bronze anodized, 3.94" x 0.500" (100.1 x 12.7)	\$30.87	\$101.28	
2361G	Ramp, Gold anodized, 3.94" x 0.500" (100.1 x 12.7)	\$33.58	\$110.17	

All ramps are supplied without mounting holes.
 Special anchors available for mounting most thresholds on concrete surfaces.

SPECIALIZED THRESHOLD SOLUTIONS		LIST PRICE		FastTrack
Part No.	Description	/Inch x /ft.		Stocked
600CP ¹	Aluminum cover plate, Aluminum, 48" (1219.2) wide max x 1/8" (3.2) - submit template with order	\$8.02		
600CPBK ¹	Aluminum cover plate, Black anodized, 48" (1219.2) wide max x 1/8" (3.2) - submit template with order	\$12.61		
600CPD ¹	Aluminum cover plate, Dark bronze anodized, 48" (1219.2) wide max x 1/8" (3.2) - submit template with order	\$12.09		
601CP ¹	Aluminum cover plate, Aluminum, 48" (1219.2) wide max x 1/4" (6.4) - submit template with order	\$15.03		
601CPBK ¹	Aluminum cover plate, Black anodized, 48" (1219.2) wide max x 1/4" (6.4) - submit template with order	\$22.98		
601CPD ¹	Aluminum cover plate, Dark bronze anodized, 48" (1219.2) wide max x 1/4" (6.4) - submit template with order	\$22.02		

1. Supplied without mounting holes.

SPECIALIZED THRESHOLD SOLUTIONS		LIST PRICE		FastTrack
Part number	Description	Per Foot	Per Meter	Stocked
657A ¹	Threshold, Aluminum, 7" (177.8) wide	\$48.39	\$158.76	
657BK ¹	Threshold, Black anodized, 7" (177.8) wide	\$71.82	\$235.63	
657D ¹	Threshold, Dark bronze anodized, 7" (177.8) wide	\$68.77	\$225.62	
657G ¹	Threshold, Gold anodized, 7" (177.8) wide	\$74.90	\$245.73	
669DP-A	Diamond-plate bulkhead threshold, Aluminum	Custom Product - submit template to Eng. Specials (see page 57)		
669DP-S	Diamond-plate bulkhead threshold, Steel	Custom Product - submit template to Eng. Specials (see page 57)		
669DP-STST	Diamond-plate bulkhead threshold, Stainless steel	Custom Product - submit template to Eng. Specials (see page 57)		
8452A	Wheelchair-accessible shower threshold, Aluminum	\$25.91	\$85.01	
8452BK	Wheelchair-accessible shower threshold, Black anodized	\$38.87	\$127.53	
8452D	Wheelchair-accessible shower threshold, Dark bronze anodized	\$37.25	\$122.21	
8452G	Wheelchair-accessible shower threshold, Gold anodized	\$40.53	\$132.97	
8452N	Threshold seal, EPDM rubber, 2" (50.8) wide	\$11.31	\$37.11	

1. Supplied without mounting holes.

Special anchors available for mounting most thresholds on concrete surfaces. Model 6570 (see [Thresholds](#) section on page 8) may also be suitable for this application (Type 1 only), depending on configuration with floor-mounted automatic door closers. Check that the bevel allows adequate clearance.

Stocked FastTrack products will ship in 5 business days or less when ordered through FastTrack. The FastTrack ordering process does not apply to Canada. Items in Bold indicate new Zero products (available as of Q3 2025).



Automatic door bottoms

HEAVY DUTY				FastTrack
Part number	Description	Size	List price each	Stocked
360AA	Mortised automatic door bottom, Clear anodized Heavy duty	10" – 18" (305 – 457)	\$179.31	
		18-1/8" – 36" (460 – 914)	\$143.38	▪
		36-1/8" – 48" (917 – 1219)	\$162.72	
		48-1/8" – 54" (1222 – 1371)	\$203.51	
		54-1/8" – 60" (1375 – 1524)	\$262.42	
361AA	Automatic door bottom, Clear anodized Heavy duty	10" – 18" (305 – 457)	\$206.37	
		18-1/8" – 36" (460 – 914)	\$162.85	▪
		36-1/8" – 48" (917 – 1219)	\$180.55	
		48-1/8" – 54" (1222 – 1371)	\$225.77	
		54-1/8" – 60" (1375 – 1524)	\$282.23	
361BK	Automatic door bottom, Black anodized Heavy duty	10" – 18" (305 – 457)	\$286.24	
		18-1/8" – 36" (460 – 914)	\$228.98	
		36-1/8" – 48" (917 – 1219)	\$239.36	
		48-1/8" – 54" (1222 – 1371)	\$299.23	
		54-1/8" – 60" (1375 – 1524)	\$374.02	
361D	Automatic door bottom, Dark bronze anodized Heavy duty	10" – 18" (305 – 457)	\$286.24	
		18-1/8" – 36" (460 – 914)	\$228.98	
		36-1/8" – 48" (917 – 1219)	\$239.36	
		48-1/8" – 54" (1222 – 1371)	\$299.23	
		54-1/8" – 60" (1375 – 1524)	\$374.02	
361G	Automatic door bottom, Gold anodized Heavy duty	10" – 18" (305 – 457)	\$286.24	
		18-1/8" – 36" (460 – 914)	\$228.98	
		36-1/8" – 48" (917 – 1219)	\$239.36	
		48-1/8" – 54" (1222 – 1371)	\$299.23	
		54-1/8" – 60" (1375 – 1524)	\$374.02	
362AA	Automatic door bottom, Clear anodized Heavy duty	10" – 18" (305 – 457)	\$206.37	
		18-1/8" – 36" (460 – 914)	\$162.85	
		36-1/8" – 48" (917 – 1219)	\$180.55	
		48-1/8" – 54" (1222 – 1371)	\$225.77	
		54-1/8" – 60" (1375 – 1524)	\$282.23	
362BK	Automatic door bottom, Black anodized Heavy duty	10" – 18" (305 – 457)	\$286.24	
		18-1/8" – 36" (460 – 914)	\$228.98	
		36-1/8" – 48" (917 – 1219)	\$239.36	
		48-1/8" – 54" (1222 – 1371)	\$299.23	
		54-1/8" – 60" (1375 – 1524)	\$374.02	
362D	Automatic door bottom, Dark bronze anodized Heavy duty	10" – 18" (305 – 457)	\$286.24	
		18-1/8" – 36" (460 – 914)	\$228.98	
		36-1/8" – 48" (917 – 1219)	\$239.36	
		48-1/8" – 54" (1222 – 1371)	\$299.23	
		54-1/8" – 60" (1375 – 1524)	\$374.02	
362G	Automatic door bottom, Gold anodized Heavy duty	10" – 18" (305 – 457)	\$286.24	
		18-1/8" – 36" (460 – 914)	\$228.98	
		36-1/8" – 48" (917 – 1219)	\$239.36	
		48-1/8" – 54" (1222 – 1371)	\$299.23	
		54-1/8" – 60" (1375 – 1524)	\$374.02	
364AA	Mortised automatic door bottom, Clear anodized Heavy duty	10" – 18" (305 – 457)	\$188.30	
		18-1/8" – 36" (460 – 914)	\$150.54	▪
		36-1/8" – 48" (917 – 1219)	\$170.37	
		48-1/8" – 54" (1222 – 1371)	\$213.10	
		54-1/8" – 60" (1375 – 1524)	\$266.34	

Maximum order length is 60" (1.5 m) unless noted otherwise. Lengths up to 96" (2.4 m) on some models available as Engineering Special order.
 Lengths 10"–18" (305–457 mm) available only with light spring drop mechanism. Not recommended for maximum drop greater than 1/2" (12.7 mm).

Stocked FastTrack products will ship in 5 business days or less when ordered through FastTrack. The FastTrack ordering process does not apply to Canada.
 Items in Bold indicate new Zero products (available as of Q3 2025).

THRESHOLDS

AUTOMATIC DOOR BOTTOMS

PERIMETER SEALS

WEATHERSTRIPPING

SOLUTIONS & SPECIALTY PRODUCTS

PARTS



HEAVY DUTY				FastTrack
Part number	Description	Size	List price each	Stocked
364FS-AA	Mortised automatic door bottom, Clear anodized Heavy duty/intumescent	18-1/8" - 36" (460 - 914)	\$213.85	
		36-1/8" - 48" (917 - 1219)	\$252.67	
		48-1/8" - 54" (1222 - 1371)	\$372.80	
		54-1/8" - 60" (1375 - 1524)	\$447.01	
365AA	Automatic door bottom, Clear anodized Heavy duty	10" - 18" (305 - 457)	\$213.51	
		18-1/8" - 36" (460 - 914)	\$170.77	▪
		36-1/8" - 48" (917 - 1219)	\$198.39	
		48-1/8" - 54" (1222 - 1371)	\$248.01	
365BK	Automatic door bottom, Black anodized Heavy duty	54-1/8" - 60" (1375 - 1524)	\$309.99	
		10" - 18" (305 - 457)	\$297.08	
		18-1/8" - 36" (460 - 914)	\$237.66	
		36-1/8" - 48" (917 - 1219)	\$241.11	
365D	Automatic door bottom, Dark bronze anodized Heavy duty	48-1/8" - 54" (1222 - 1371)	\$301.41	
		54-1/8" - 60" (1375 - 1524)	\$376.75	
		10" - 18" (305 - 457)	\$297.08	
		18-1/8" - 36" (460 - 914)	\$237.66	
365G	Automatic door bottom, Gold anodized Heavy duty	36-1/8" - 48" (917 - 1219)	\$241.11	
		48-1/8" - 54" (1222 - 1371)	\$301.41	
		54-1/8" - 60" (1375 - 1524)	\$376.75	
		10" - 18" (305 - 457)	\$297.08	
365FS-AA	Automatic door bottom, Clear anodized Heavy duty/intumescent	18-1/8" - 36" (460 - 914)	\$223.82	
		36-1/8" - 48" (917 - 1219)	\$268.59	
		48-1/8" - 54" (1222 - 1371)	\$398.93	
		54-1/8" - 60" (1375 - 1524)	\$478.67	
365FS-BK	Automatic door bottom, Black anodized Heavy duty/intumescent	18-1/8" - 36" (460 - 914)	\$295.75	
		36-1/8" - 48" (917 - 1219)	\$317.08	
		48-1/8" - 54" (1222 - 1371)	\$473.11	
		54-1/8" - 60" (1375 - 1524)	\$567.72	
365FS-D	Automatic door bottom, Dark bronze anodized Heavy duty/intumescent	18-1/8" - 36" (460 - 914)	\$295.75	
		36-1/8" - 48" (917 - 1219)	\$317.08	
		48-1/8" - 54" (1222 - 1371)	\$473.11	
		54-1/8" - 60" (1375 - 1524)	\$567.72	
365FS-G	Automatic door bottom, Gold anodized Heavy duty/intumescent	18-1/8" - 36" (460 - 914)	\$295.75	
		36-1/8" - 48" (917 - 1219)	\$317.08	
		48-1/8" - 54" (1222 - 1371)	\$473.11	
		54-1/8" - 60" (1375 - 1524)	\$567.72	
366AA	Automatic door bottom, Clear anodized Heavy duty	10" - 18" (305 - 457)	\$211.73	
		18-1/8" - 36" (460 - 914)	\$169.32	
		36-1/8" - 48" (917 - 1219)	\$196.71	
		48-1/8" - 54" (1222 - 1371)	\$245.92	
366BK	Automatic door bottom, Black anodized Heavy duty	54-1/8" - 60" (1375 - 1524)	\$307.38	
		10" - 18" (305 - 457)	\$294.94	
		18-1/8" - 36" (460 - 914)	\$235.93	
		36-1/8" - 48" (917 - 1219)	\$239.36	
		48-1/8" - 54" (1222 - 1371)	\$299.23	
		54-1/8" - 60" (1375 - 1524)	\$374.02	

Maximum order length is 60" (1.5 m) unless noted otherwise. Lengths up to 96" (2.4 m) on some models available as Engineering Special order. Lengths 10"-18" (305-457 mm) available only with light spring drop mechanism. Not recommended for maximum drop greater than 1/2" (12.7 mm).

Stocked FastTrack products will ship in 5 business days or less when ordered through FastTrack. The FastTrack ordering process does not apply to Canada. Items in Bold indicate new Zero products (available as of Q3 2025).



HEAVY DUTY				FastTrack
Part number	Description	Size	List price each	Stocked
366D	Automatic door bottom, Dark bronze anodized Heavy duty	10" – 18" (305 – 457)	\$294.94	
		18-1/8" – 36" (460 – 914)	\$235.93	
		36-1/8" – 48" (917 – 1219)	\$239.36	
		48-1/8" – 54" (1222 – 1371)	\$299.23	
		54-1/8" – 60" (1375 – 1524)	\$374.02	
366G	Automatic door bottom, Gold anodized Heavy duty	10" – 18" (305 – 457)	\$294.94	
		18-1/8" – 36" (460 – 914)	\$235.93	
		36-1/8" – 48" (917 – 1219)	\$239.36	
		48-1/8" – 54" (1222 – 1371)	\$299.23	
		54-1/8" – 60" (1375 – 1524)	\$374.02	
366FS-AA	Automatic door bottom, Clear anodized Heavy duty/intumescent	18-1/8" – 36" (460 – 914)	\$228.04	
		36-1/8" – 48" (917 – 1219)	\$273.66	
		48-1/8" – 54" (1222 – 1371)	\$406.46	
		54-1/8" – 60" (1375 – 1524)	\$487.70	
366FS-BK	Automatic door bottom, Black anodized Heavy duty/intumescent	18-1/8" – 36" (460 – 914)	\$301.31	
		36-1/8" – 48" (917 – 1219)	\$323.06	
		48-1/8" – 54" (1222 – 1371)	\$482.04	
		54-1/8" – 60" (1375 – 1524)	\$578.44	
366FS-D	Automatic door bottom, Dark bronze anodized Heavy duty/intumescent	18-1/8" – 36" (460 – 914)	\$301.31	
		36-1/8" – 48" (917 – 1219)	\$323.06	
		48-1/8" – 54" (1222 – 1371)	\$482.04	
		54-1/8" – 60" (1375 – 1524)	\$578.44	
366FS-G	Automatic door bottom, Gold anodized Heavy duty/intumescent	18-1/8" – 36" (460 – 914)	\$301.31	
		36-1/8" – 48" (917 – 1219)	\$323.06	
		48-1/8" – 54" (1222 – 1371)	\$482.04	
		54-1/8" – 60" (1375 – 1524)	\$578.44	
367AA	Automatic door bottom, Clear anodized Heavy duty/acoustic sound reduction	10" – 18" (305 – 457)	\$276.75	
		18-1/8" – 36" (460 – 914)	\$212.86	▪
		36-1/8" – 48" (917 – 1219)	\$244.77	
367BK	Automatic door bottom, Black anodized Heavy duty/acoustic sound reduction	10" – 18" (305 – 457)	\$331.96	
		18-1/8" – 36" (460 – 914)	\$263.30	
		36-1/8" – 48" (917 – 1219)	\$302.89	
367D	Automatic door bottom, Dark bronze anodized Heavy duty/acoustic sound reduction	10" – 18" (305 – 457)	\$331.96	
		18-1/8" – 36" (460 – 914)	\$263.30	
		36-1/8" – 48" (917 – 1219)	\$302.89	
367G	Automatic door bottom, Gold anodized Heavy duty/acoustic sound reduction	10" – 18" (305 – 457)	\$331.96	
		18-1/8" – 36" (460 – 914)	\$263.30	
		36-1/8" – 48" (917 – 1219)	\$302.89	
368AA	Automatic door bottom, Clear anodized Heavy duty/acoustic sound reduction	10" – 18" (305 – 457)	\$276.75	
		18-1/8" – 36" (460 – 914)	\$212.86	
		36-1/8" – 48" (917 – 1219)	\$244.77	
368BK	Automatic door bottom, Black anodized Heavy duty/acoustic sound reduction	12" – 18" (305 – 457)	\$331.96	
		18-1/8" – 36" (460 – 914)	\$263.30	
		36-1/8" – 48" (917 – 1219)	\$302.89	
368D	Automatic door bottom, Dark bronze anodized Heavy duty/acoustic sound reduction	10" – 18" (305 – 457)	\$331.96	
		18-1/8" – 36" (460 – 914)	\$263.30	
		36-1/8" – 48" (917 – 1219)	\$302.89	
368G	Automatic door bottom, Gold anodized Heavy duty/acoustic sound reduction	10" – 18" (305 – 457)	\$331.96	
		18-1/8" – 36" (460 – 914)	\$263.30	
		36-1/8" – 48" (917 – 1219)	\$302.89	
369AA	Mortised automatic door bottom, Clear anodized Heavy duty/acoustic sound reduction	10" – 18" (305 – 457)	\$242.75	
		18-1/8" – 36" (460 – 914)	\$182.54	▪
		36-1/8" – 48" (917 – 1219)	\$209.87	

Maximum order length is 60" (1.5 m) unless noted otherwise. Lengths up to 96" (2.4 m) on some models available as Engineering Special order.
 Lengths 10"–18" (305–457 mm) available only with light spring drop mechanism. Not recommended for maximum drop greater than 1/2" (12.7 mm).

Stocked FastTrack products will ship in 5 business days or less when ordered through FastTrack. The FastTrack ordering process does not apply to Canada.
 Items in Bold indicate new Zero products (available as of Q3 2025).

THRESHOLDS

AUTOMATIC DOOR BOTTOMS

PERIMETER SEALS

WEATHERSTRIPPING

SOLUTIONS & SPECIALTY PRODUCTS

PARTS



REGULAR DUTY				FastTrack
Part number	Description	Size	List price each	Stocked
350AA	Mortised automatic door bottom, Clear anodized	10" – 18" (305 – 457)	\$125.30	
		18-1/8" – 36" (460 – 914)	\$94.73	▪
		36-1/8" – 48" (917 – 1219)	\$100.92	
		48-1/8" – 54" (1222 – 1371)	\$126.08	
		54-1/8" – 60" (1375 – 1524)	\$157.69	
351AA	Automatic door bottom, Clear anodized	10" – 18" (305 – 457)	\$145.96	
		18-1/8" – 36" (460 – 914)	\$116.78	▪
		36-1/8" – 48" (917 – 1219)	\$140.26	
		48-1/8" – 54" (1222 – 1371)	\$175.41	
		54-1/8" – 60" (1375 – 1524)	\$219.28	
351BK	Automatic door bottom, Black anodized	10" – 18" (305 – 457)	\$170.72	
		18-1/8" – 36" (460 – 914)	\$136.55	
		36-1/8" – 48" (917 – 1219)	\$188.69	
		48-1/8" – 54" (1222 – 1371)	\$235.93	
		54-1/8" – 60" (1375 – 1524)	\$294.94	
351S-BK	Silicone extrusion, 0.433" wide	Replacement gasket	\$7.22	
351D	Automatic door bottom, Dark bronze anodized	10" – 18" (305 – 457)	\$170.72	
		18-1/8" – 36" (460 – 914)	\$136.55	
		36-1/8" – 48" (917 – 1219)	\$188.69	
		48-1/8" – 54" (1222 – 1371)	\$235.93	
		54-1/8" – 60" (1375 – 1524)	\$294.94	
351G	Automatic door bottom, Gold anodized	10" – 18" (305 – 457)	\$170.72	
		18-1/8" – 36" (460 – 914)	\$136.55	
		36-1/8" – 48" (917 – 1219)	\$188.69	
		48-1/8" – 54" (1222 – 1371)	\$235.93	
		54-1/8" – 60" (1375 – 1524)	\$294.94	
352AA	Automatic door bottom, Clear anodized	10" – 18" (305 – 457)	\$145.96	
		18-1/8" – 36" (460 – 914)	\$116.78	
		36-1/8" – 48" (917 – 1219)	\$140.26	
		48-1/8" – 54" (1222 – 1371)	\$175.41	
		54-1/8" – 60" (1375 – 1524)	\$219.28	
352BK	Automatic door bottom, Black anodized	10" – 18" (305 – 457)	\$170.72	
		18-1/8" – 36" (460 – 914)	\$136.55	
		36-1/8" – 48" (917 – 1219)	\$188.69	
		48-1/8" – 54" (1222 – 1371)	\$235.93	
		54-1/8" – 60" (1375 – 1524)	\$294.94	
352D	Automatic door bottom, Dark bronze anodized	10" – 18" (305 – 457)	\$170.72	
		18-1/8" – 36" (460 – 914)	\$136.55	
		36-1/8" – 48" (917 – 1219)	\$188.69	
		48-1/8" – 54" (1222 – 1371)	\$235.93	
		54-1/8" – 60" (1375 – 1524)	\$294.94	
352G	Automatic door bottom, Gold anodized Regular duty	10" – 18" (305 – 457)	\$170.72	
		18-1/8" – 36" (460 – 914)	\$136.55	
		36-1/8" – 48" (917 – 1219)	\$188.69	
		48-1/8" – 54" (1222 – 1371)	\$235.93	
		54-1/8" – 60" (1375 – 1524)	\$294.94	
355AA	Mortised automatic door bottom, Aluminum Regular duty	10" – 36" (254 – 914)	\$100.36	▪
		36-1/8" – 48" (917 – 1219)	\$113.74	▪
		48-1/8" – 54" (1222 – 1371)	\$139.43	
355I	Mortised automatic door bottom, Aluminum Regular duty	18-1/8" – 36" (460 – 914)	\$96.75	
		36-1/8" – 48" (917 – 1219)	\$109.65	
		48-1/8" – 54" (1222 – 1371)	\$134.42	

Maximum order length is 60" (1.5 m) unless noted otherwise. Lengths up to 96" (2.4 m) on some models available as Engineering Special order.
 Lengths 10"–18" (305–457 mm) available only with light spring drop mechanism. Not recommended for maximum drop greater than 1/2" (12.7 mm).

Stocked FastTrack products will ship in 5 business days or less when ordered through FastTrack. The FastTrack ordering process does not apply to Canada.
 Items in Bold indicate new Zero products (available as of Q3 2025).

THRESHOLDS

AUTOMATIC DOOR BOTTOMS

PERIMETER SEALS

WEATHERSTRIPPING

SOLUTIONS & SPECIALTY PRODUCTS

PARTS



REGULAR DUTY				FastTrack
Part number	Description	Size	List price each	Stocked
3552	Mortised brush automatic door bottom, Aluminum Regular duty	18-1/8" – 36" (460 – 914)	\$102.34	
		36-1/8" – 48" (917 – 1219)	\$115.99	
		48-1/8" – 54" (1222 – 1371)	\$142.15	

Maximum order length is 60" (1.5 m) unless noted otherwise. Lengths up to 96" (2.4 m) on some models available as Engineering Special order.
 Lengths 10"–18" (305–457 mm) available only with light spring drop mechanism. Not recommended for maximum drop greater than 1/2" (12.7 mm).

LIGHT DUTY				FastTrack
Part number	Description	Size	List price each	Stocked
320AA	Mortised automatic door bottom, Clear anodized Light duty	10" – 18" (305 – 457)	\$98.32	
		18-1/8" – 36" (460 – 914)	\$81.93	
		36-1/8" – 48" (917 – 1219)	\$87.33	
		48-1/8" – 54" (1222 – 1371)	\$109.14	
		54-1/8" – 60" (1375 – 1524)	\$135.36	
321AA	Automatic door bottom, Clear anodized Handing is reversible in field Light duty	10" – 18" (305 – 457)	\$116.72	
		18-1/8" – 36" (460 – 914)	\$99.36	
		36-1/8" – 48" (917 – 1219)	\$127.92	
		48-1/8" – 54" (1222 – 1371)	\$160.13	
		54-1/8" – 60" (1375 – 1524)	\$200.12	
321BK	Automatic door bottom, Black anodized Handing is reversible in field Light duty	10" – 18" (305 – 457)	\$149.03	
		18-1/8" – 36" (460 – 914)	\$124.19	
		36-1/8" – 48" (917 – 1219)	\$171.73	
		48-1/8" – 54" (1222 – 1371)	\$214.61	
		54-1/8" – 60" (1375 – 1524)	\$268.28	
321D	Automatic door bottom, Dark bronze anodized Handing is reversible in field Light duty	10" – 18" (305 – 457)	\$149.03	
		18-1/8" – 36" (460 – 914)	\$124.19	
		36-1/8" – 48" (917 – 1219)	\$171.73	
		48-1/8" – 54" (1222 – 1371)	\$214.61	
		54-1/8" – 60" (1375 – 1524)	\$268.28	
321G	Automatic door bottom, Gold anodized Handing is reversible in field Light duty	10" – 18" (305 – 457)	\$149.03	
		18-1/8" – 36" (460 – 914)	\$124.19	
		36-1/8" – 48" (917 – 1219)	\$171.73	
		48-1/8" – 54" (1222 – 1371)	\$214.61	
		54-1/8" – 60" (1375 – 1524)	\$268.28	
323AA	Mortised automatic door bottom, Aluminum Handed	10" – 18" (305 – 457)	\$95.93	
		18-1/8" – 36" (460 – 914)	\$79.95	
		36-1/8" – 48" (917 – 1219)	\$85.19	
		48-1/8" – 54" (1222 – 1371)	\$106.48	
		54-1/8" – 60" (1375 – 1524)	\$133.06	

Handed

Maximum order length is 60" (1.5 m) unless noted otherwise. Lengths up to 96" (2.4 m) on some models available as Engineering Special order.
 Lengths 10"–18" (305–457 mm) available only with light spring drop mechanism. Not recommended for maximum drop greater than 1/2" (12.7 mm).

SPECIAL PURPOSE - SLIDING & POCKET DOORS				FastTrack
Part number	Description	Size	List price each	Stocked
7350AA	Mortised automatic door bottom, Clear anodized for sliding doors	10" – 18" (305 – 457)	\$125.15	
		18-1/8" – 36" (460 – 914)	\$94.59	
		36-1/8" – 48" (917 – 1219)	\$100.77	
		48-1/8" – 54" (1222 – 1371)	\$125.91	
		54-1/8" – 60" (1375 – 1524)	\$157.52	
7350AA-LS	Mortised automatic door bottom, Clear anodized for sliding doors Light spring/low force ADA Compliant	10" – 18" (305 – 457)	\$131.40	
		18-1/8" – 36" (460 – 914)	\$99.34	
		36-1/8" – 48" (917 – 1219)	\$105.82	
		48-1/8" – 54" (1222 – 1371)	\$125.91	
		54-1/8" – 60" (1375 – 1524)	\$157.52	

Stocked FastTrack products will ship in 5 business days or less when ordered through FastTrack. The FastTrack ordering process does not apply to Canada. Items in Bold indicate new Zero products (available as of Q3 2025).



SPECIAL PURPOSE - ADA COMPLIANT DOOR BOTTOMS				FastTrack
Part number	Description	Size	List price each	Stocked
323AA-LS	Mortised automatic door bottom, Aluminum Light spring/low force Handed	10" - 18" (305 - 457)	\$100.73	
		18-1/8" - 36" (460 - 914)	\$83.93	
		36-1/8" - 48" (917 - 1219)	\$89.45	
		48-1/8" - 54" (1222 - 1371)	\$106.48	
		54-1/8" - 60" (1375 - 1524)	\$133.06	
350AA-LS	Mortised automatic door bottom, Clear anodized Light spring/low force	10" - 18" (305 - 457)	\$133.90	
		18-1/8" - 36" (460 - 914)	\$107.05	
		36-1/8" - 48" (917 - 1219)	\$113.46	
351AA-LS	Automatic door bottom, Clear anodized Light spring/low force	10" - 18" (305 - 457)	\$158.02	
		18-1/8" - 36" (460 - 914)	\$126.46	
		36-1/8" - 48" (917 - 1219)	\$149.95	
351BK-LS	Automatic door bottom, Black anodized Light spring/low force	10" - 18" (305 - 457)	\$183.73	
		18-1/8" - 36" (460 - 914)	\$146.96	
		36-1/8" - 48" (917 - 1219)	\$199.48	
351D-LS	Automatic door bottom, Dark bronze anodized Light spring/low force	10" - 18" (305 - 457)	\$183.73	
		18-1/8" - 36" (460 - 914)	\$146.96	
		36-1/8" - 48" (917 - 1219)	\$199.48	
351G-LS	Automatic door bottom, Gold anodized Light spring/low force	10" - 18" (305 - 457)	\$183.73	
		18-1/8" - 36" (460 - 914)	\$146.96	
		36-1/8" - 48" (917 - 1219)	\$199.48	
352AA-LS	Automatic door bottom, Clear anodized Light spring/low force	10" - 18" (305 - 457)	\$158.02	
		18-1/8" - 36" (460 - 914)	\$126.46	
		36-1/8" - 48" (917 - 1219)	\$149.95	
352BK-LS	Automatic door bottom, Black anodized Light spring/low force	10" - 18" (305 - 457)	\$183.73	
		18-1/8" - 36" (460 - 914)	\$146.96	
		36-1/8" - 48" (917 - 1219)	\$199.48	
352D-LS	Automatic door bottom, Dark bronze anodized Light spring/low force	10" - 18" (305 - 457)	\$183.73	
		18-1/8" - 36" (460 - 914)	\$146.96	
		36-1/8" - 48" (917 - 1219)	\$199.48	
352G-LS	Automatic door bottom, Gold anodized Light spring/low force	10" - 18" (305 - 457)	\$183.73	
		18-1/8" - 36" (460 - 914)	\$146.96	
		36-1/8" - 48" (917 - 1219)	\$199.48	
360AA-LS	Mortised automatic door bottom, Clear anodized Light spring/low force	10" - 18" (305 - 457)	\$188.26	
		18-1/8" - 36" (460 - 914)	\$150.58	
		36-1/8" - 48" (917 - 1219)	\$170.85	
		48-1/8" - 54" (1222 - 1371)	\$203.51	
		54-1/8" - 60" (1375 - 1524)	\$262.42	
361AA-LS	Automatic door bottom, Clear anodized Light spring/low force	10" - 18" (305 - 457)	\$216.71	
		18-1/8" - 36" (460 - 914)	\$171.02	
		36-1/8" - 48" (917 - 1219)	\$189.60	
		48-1/8" - 54" (1222 - 1371)	\$225.77	
		54-1/8" - 60" (1375 - 1524)	\$282.23	
361BK-LS	Automatic door bottom, Black anodized Light spring/low force	10" - 18" (305 - 457)	\$300.58	
		18-1/8" - 36" (460 - 914)	\$240.45	
		36-1/8" - 48" (917 - 1219)	\$251.29	
		48-1/8" - 54" (1222 - 1371)	\$299.23	
		54-1/8" - 60" (1375 - 1524)	\$374.02	
361D-LS	Automatic door bottom, Dark bronze anodized Light spring/low force	10" - 18" (305 - 457)	\$300.58	
		18-1/8" - 36" (460 - 914)	\$240.45	
		36-1/8" - 48" (917 - 1219)	\$251.29	
		48-1/8" - 54" (1222 - 1371)	\$299.23	
		54-1/8" - 60" (1375 - 1524)	\$374.02	

Handed

Stocked FastTrack products will ship in 5 business days or less when ordered through FastTrack. The FastTrack ordering process does not apply to Canada. Items in Bold indicate new Zero products (available as of Q3 2025).

THRESHOLDS

AUTOMATIC DOOR BOTTOMS

PERIMETER SEALS

WEATHERSTRIPPING

SOLUTIONS & SPECIALTY PRODUCTS

PARTS



SPECIAL PURPOSE - ADA COMPLIANT DOOR BOTTOMS				FastTrack
Part number	Description	Size	List price each	Stocked
361G-LS	Automatic door bottom, Gold anodized Light spring/low force	10" - 18" (305 - 457)	\$300.58	
		18-1/8" - 36" (460 - 914)	\$240.45	
		36-1/8" - 48" (917 - 1219)	\$251.29	
		48-1/8" - 54" (1222 - 1371)	\$299.23	
		54-1/8" - 60" (1375 - 1524)	\$374.02	
364AA-LS	Mortised automatic door bottom, Clear anodized Light spring/low force	10" - 18" (305 - 457)	\$214.31	
		18-1/8" - 36" (460 - 914)	\$171.39	
		36-1/8" - 48" (917 - 1219)	\$192.61	
365AA-LS	Automatic door bottom, Clear anodized Heavy duty/intumescent	10" - 18" (305 - 457)	\$225.55	
		18-1/8" - 36" (460 - 914)	\$180.52	
		36-1/8" - 48" (917 - 1219)	\$208.17	
365BK-LS	Automatic door bottom, Black anodized Light spring/low force	10" - 18" (305 - 457)	\$310.16	
		18-1/8" - 36" (460 - 914)	\$248.15	
		36-1/8" - 48" (917 - 1219)	\$252.85	
365D-LS	Automatic door bottom, Dark bronze anodized Light spring/low force	10" - 18" (305 - 457)	\$310.16	
		18-1/8" - 36" (460 - 914)	\$248.15	
		36-1/8" - 48" (917 - 1219)	\$251.66	
365G-LS	Automatic door bottom, Gold anodized Light spring/low force	10" - 18" (305 - 457)	\$310.16	
		18-1/8" - 36" (460 - 914)	\$248.15	
		36-1/8" - 48" (917 - 1219)	\$251.66	
366AA-LS	Automatic door bottom, Clear anodized Light spring/low force	10" - 18" (305 - 457)	\$223.66	
		18-1/8" - 36" (460 - 914)	\$178.99	
		36-1/8" - 48" (917 - 1219)	\$206.41	
366LBK-LS	Automatic door bottom, Black anodized Light spring/low force	10" - 18" (305 - 457)	\$307.90	
		18-1/8" - 36" (460 - 914)	\$246.34	
		36-1/8" - 48" (917 - 1219)	\$249.84	
366D-LS	Automatic door bottom, Dark bronze anodized Light spring/low force	10" - 18" (305 - 457)	\$307.90	
		18-1/8" - 36" (460 - 914)	\$246.34	
		36-1/8" - 48" (917 - 1219)	\$249.84	
366G-LS	Automatic door bottom, Gold anodized Light spring/low force	10" - 18" (305 - 457)	\$307.90	
		18-1/8" - 36" (460 - 914)	\$246.34	
		36-1/8" - 48" (917 - 1219)	\$249.84	

☞ Handed

Stocked FastTrack products will ship in 5 business days or less when ordered through FastTrack. The FastTrack ordering process does not apply to Canada. Items in Bold indicate new Zero products (available as of Q3 2025).



Perimeter seals

SPECIALIZED PERIMETER SEAL ACCESSORIES		LIST PRICE		FastTrack
Part number	Description	Per Foot	Per Meter	Stocked
11A	Rain drip, Aluminum	\$7.08	\$23.23	
11BK	Rain drip, Black anodized	\$10.07	\$33.04	
11D	Rain drip, Dark bronze anodized	\$10.07	\$33.04	
11G	Rain drip, Gold anodized	\$10.07	\$33.04	
23B	Spring interlocking hook, Bronze	\$11.33	\$37.17	
25AA	Extruded aluminum angle, Clear anodized	\$4.05	\$13.29	
25BK	Angle, Black anodized	\$7.91	\$25.95	
25D	Angle, Dark bronze anodized	\$7.91	\$25.95	
25G	Angle, Gold anodized	\$7.91	\$25.95	
141AA	Extruded rain drip, Clear anodized	\$13.87	\$45.51	
141BK	Extruded rain drip, Black anodized	\$22.61	\$74.18	
141D	Extruded rain drip, Dark bronze anodized	\$22.61	\$74.18	
141G	Extruded rain drip, Gold anodized	\$22.61	\$74.18	
142AA	Extruded rain drip, Clear anodized	\$11.91	\$39.07	▪
142BK	Extruded rain drip, Black anodized	\$20.62	\$67.65	▪
142D	Extruded rain drip, Dark bronze anodized	\$20.62	\$67.65	▪
142G	Extruded rain drip, Gold anodized	\$20.62	\$67.65	
144AA	Extruded hook/silicone tube, Clear anodized	\$6.44	\$21.13	

Order components separately.

DOOR SWEEPS		LIST PRICE			FastTrack
Part number	Description	Each	Per Foot	Per Meter	Stocked
39A	Solid neoprene, Aluminum	-	\$12.50	\$41.01	▪
39BK	Solid neoprene, Black anodized	-	\$17.38	\$57.02	▪
39D	Solid neoprene, Dark bronze anodized	-	\$17.38	\$57.02	▪
39G	Solid neoprene, Gold anodized	-	\$17.38	\$57.02	
39WA	Solid neoprene, Aluminum	-	\$17.14	\$56.23	
39WBK	Solid neoprene, Black anodized	-	\$23.60	\$77.43	
39WD	Solid neoprene, Dark bronze anodized	-	\$23.60	\$77.43	
39WG	Solid neoprene, Gold anodized	-	\$23.60	\$77.43	
50MAA	Beveled neoprene, Aluminum	-	\$11.32	\$37.14	
50MBK	Beveled neoprene, Black anodized	-	\$16.24	\$53.28	
50MD	Beveled neoprene, Dark bronze anodized	-	\$16.24	\$53.28	
50MG	Beveled neoprene, Gold anodized	-	\$16.24	\$53.28	
93A	Loop neoprene, Aluminum	-	\$27.15	\$89.07	
93BK	Loop neoprene, Black anodized	-	\$39.08	\$128.22	
93D	Loop neoprene, Dark bronze anodized	-	\$39.08	\$128.22	
93G	Loop neoprene, Gold anodized	-	\$39.08	\$128.22	
93N	Bulb seal, neoprene, 3" (76.2) wide	-	\$4.04	\$13.25	
95A	Neoprene, Aluminum	-	\$17.03	\$55.87	
95BK	Neoprene, Black anodized	-	\$24.56	\$80.58	
95D	Neoprene, Dark bronze anodized	-	\$24.56	\$80.58	
95G	Neoprene, Gold anodized	-	\$24.56	\$80.58	
96P	Nylon brush, 1-1/8" (28.6)	-	\$18.28	\$59.97	

Stocked FastTrack products will ship in 5 business days or less when ordered through FastTrack. The FastTrack ordering process does not apply to Canada. Items in Bold indicate new Zero products (available as of Q3 2025).

THRESHOLDS

AUTOMATIC DOOR BOTTOMS

PERIMETER SEALS

WEATHERSTRIPPING

SOLUTIONS & SPECIALTY PRODUCTS

PARTS



DOOR SWEEPS		LIST PRICE			FastTrack
Part number	Description	Each	Per Foot	Per Meter	Stocked
96A	Nylon brush, Aluminum	-	\$29.29	\$96.10	
96BK	Nylon brush, Black anodized	-	\$42.16	\$138.32	
96D	Nylon brush, Dark bronze anodized	-	\$42.16	\$138.32	
96G	Nylon brush, Gold anodized	-	\$42.16	\$138.32	
98A-PSA	Polypropylene brush (pile), PSA, Aluminum	-	\$11.75	\$38.55	
98BK-PSA	Polypropylene brush (pile), PSA, Black anodized	-	\$17.53	\$57.51	
98D-PSA	Polypropylene brush (pile), PSA, Dark bronze anodized	-	\$17.53	\$57.51	
98G-PSA	Polypropylene brush (pile), PSA, Gold anodized	-	\$17.53	\$57.51	
255AA	Adjustable surface sweep with spring/pile insert, Clear anodized	-	\$33.40	\$109.58	
255BK	Adjustable surface sweep with spring/pile insert, Black anodized	-	\$49.60	\$162.73	
255D	Adjustable surface sweep with spring/pile insert, Dark bronze anodized	-	\$49.60	\$162.73	
255G	Adjustable surface sweep with spring/pile insert, Gold anodized	-	\$49.60	\$162.73	
329AA	Beveled neoprene, Clear anodized	-	\$11.32	\$37.14	
329B	Beveled neoprene, Bronze	-	\$31.40	\$103.02	
329BK	Beveled neoprene, Black anodized	-	\$17.99	\$59.02	
329D	Beveled neoprene, Dark bronze anodized	-	\$17.99	\$59.02	
329G	Beveled neoprene, Gold anodized	-	\$17.99	\$59.02	
339AA	Neoprene, Clear anodized	-	\$12.49	\$40.98	
339B	Neoprene, Bronze	-	\$34.05	\$111.71	
339BK	Neoprene, Black anodized	-	\$19.75	\$64.80	
339D	Neoprene, Dark bronze anodized	-	\$19.75	\$64.80	
339G	Neoprene, Gold anodized	-	\$19.75	\$64.80	
339FS-AA	Neoprene/Intumet, Clear anodized	-	\$20.73	\$68.01	
339FS-BK	Neoprene/Intumet, Black anodized	-	\$27.74	\$91.01	
339FS-D	Neoprene/Intumet, Dark bronze anodized	-	\$27.74	\$91.01	
339FS-G	Neoprene/Intumet, Gold anodized	-	\$27.74	\$91.01	
339WAA	Neoprene, Clear anodized	-	\$17.14	\$56.23	
339WB	Neoprene, Bronze	-	\$35.59	\$116.77	
339WBK	Neoprene, Black anodized	-	\$23.49	\$77.07	
339WD	Neoprene, Dark bronze anodized	-	\$23.49	\$77.07	
339WG	Neoprene, Gold anodized	-	\$23.49	\$77.07	
477AA	Snap-on cover/neoprene seal, Clear anodized	-	\$13.47	\$44.19	
477BK	Snap-on cover/neoprene seal, Black anodized	-	\$19.75	\$64.80	
477D	Snap-on cover/neoprene seal, Dark bronze anodized	-	\$19.75	\$64.80	
477G	Snap-on cover/neoprene seal, Gold anodized	-	\$19.75	\$64.80	
477AA END CAP	End cap for 477 gasket housing	-	\$8.83	Each	
539AA	Solid neoprene, Clear anodized	-	\$15.47	\$50.75	
539BK	Solid neoprene, Black anodized	-	\$23.90	\$78.41	
539D	Solid neoprene, Dark bronze anodized	-	\$23.90	\$78.41	
539G	Solid neoprene, Gold anodized	-	\$23.90	\$78.41	
571AA	Self adjusting/neoprene lip, Clear anodized	-	\$21.51	\$70.57	
571BK	Self adjusting/neoprene lip, Black anodized	-	\$30.96	\$101.57	
571D	Self adjusting/neoprene lip, Dark bronze anodized	-	\$30.96	\$101.57	
571G	Self adjusting/neoprene lip, Gold anodized	-	\$30.96	\$101.57	
639WA	Solid neoprene, Aluminum	-	\$22.11	\$72.54	

Stocked FastTrack products will ship in 5 business days or less when ordered through FastTrack. The FastTrack ordering process does not apply to Canada. Items in Bold indicate new Zero products (available as of Q3 2025).

THRESHOLDS

AUTOMATIC DOOR BOTTOMS

PERIMETER SEALS

WEATHERSTRIPPING

SOLUTIONS & SPECIALTY PRODUCTS

PARTS



DOOR SWEEPS		LIST PRICE			FastTrack
Part number	Description	Each	Per Foot	Per Meter	Stocked
639WBK	Solid neoprene, Black anodized	-	\$30.81	\$101.08	
639WD	Solid neoprene, Dark bronze anodized	-	\$30.81	\$101.08	
639WG	Solid neoprene, Gold anodized	-	\$30.81	\$101.08	
8001A-36	Nylon brush door sweep, 1" (25.4) long, Aluminum, 36" (914.4)	\$25.86	-	-	▪
8001A-48	Nylon brush door sweep, 1" (25.4) long, Aluminum, 48" (1219.2)	\$34.49	-	-	
8001A-84	Nylon brush door sweep, 1" (25.4) long, Aluminum, 84" (2133.6)	\$60.35	-	-	▪
8001A-3684	Nylon brush door sweep, 1" (25.4) long, Aluminum, 36X84" set (914.4 x 2133.6)	\$146.56	-	-	▪
8001AA-36	Nylon brush door sweep, 1" (25.4) long, Clear anodized, 36" (914.4)	\$28.22	-	-	▪
8001AA-48	Nylon brush door sweep, 1" (25.4) long, Clear anodized, 48" (1219.2)	\$37.62	-	-	
8001AA-84	Nylon brush door sweep, 1" (25.4) long, Clear anodized, 84" (2133.6)	\$65.84	-	-	▪
8001AA-3684	Nylon brush door sweep, 1" (25.4) long, Clear anodized, 36X84" set (914.4 x 2133.6)	\$159.89	-	-	▪
8001BK-36	Nylon brush door sweep, 1" (25.4) long, Black anodized, 36" (914.4)	\$43.89	-	-	▪
8001BK-48	Nylon brush door sweep, 1" (25.4) long, Black anodized, 48" (1219.2)	\$58.52	-	-	
8001BK-84	Nylon brush door sweep, 1" (25.4) long, Black anodized, 84" (2133.6)	\$102.41	-	-	
8001BK-3684	Nylon brush door sweep, 1" (25.4) long, Black anodized, 36X84" set (914.4 x 2133.6)	\$248.71	-	-	
8001D-36	Nylon brush door sweep, 1" (25.4) long, Dark bronze anodized, 36" (914.4)	\$38.40	-	-	
8001D-48	Nylon brush door sweep, 1" (25.4) long, Dark bronze anodized, 48" (1219.2)	\$51.21	-	-	
8001D-84	Nylon brush door sweep, 1" (25.4) long, Dark bronze anodized, 84" (2133.6)	\$89.61	-	-	
8001D-3684	Nylon brush door sweep, 1" (25.4) long, Dark bronze anodized, 36X84" set (914.4 x 2133.6)	\$217.62	-	-	
8002A-36	Nylon brush door sweep, 2" (50.8) long, Aluminum, 36" (914.4)	\$54.86	-	-	▪
8002A-48	Nylon brush door sweep, 2" (50.8) long, Aluminum, 48" (1219.2)	\$73.15	-	-	
8002AA-36	Nylon brush door sweep, 2" (50.8) long, Clear anodized, 36" (914.4)	\$65.84	-	-	▪
8002AA-48	Nylon brush door sweep, 2" (50.8) long, Clear anodized, 48" (1219.2)	\$87.78	-	-	
8002BK-36	Nylon brush door sweep, 2" (50.8) long, Black anodized, 36" (914.4)	\$87.78	-	-	▪
8002BK-48	Nylon brush door sweep, 2" (50.8) long, Black anodized, 48" (1219.2)	\$117.04	-	-	
8002D-36	Nylon brush door sweep, 2" (50.8) long, Dark bronze anodized, 36" (914.4)	\$84.65	-	-	▪
8002D-48	Nylon brush door sweep, 2" (50.8) long, Dark bronze anodized, 48" (1219.2)	\$112.86	-	-	
8015A-36	Nylon brush door sweep, 1.5" (38.1) long, Aluminum, 36" (914.4)	\$40.76	-	-	▪
8015A-48	Nylon brush door sweep, 1.5" (38.1) long, Aluminum, 48" (1219.2)	\$54.34	-	-	
8015AA-36	Nylon brush door sweep, 1.5" (38.1) long, Clear anodized, 36" (914.4)	\$47.81	-	-	▪
8015AA-48	Nylon brush door sweep, 1.5" (38.1) long, Clear anodized, 48" (1219.2)	\$63.75	-	-	
8015BK-36	Nylon brush door sweep, 1.5" (38.1) long, Black anodized, 36" (914.4)	\$59.57	-	-	▪
8015BK-48	Nylon brush door sweep, 1.5" (38.1) long, Black anodized, 48" (1219.2)	\$79.42	-	-	
8015D-36	Nylon brush door sweep, 1.5" (38.1) long, Dark bronze anodized, 36" (914.4)	\$59.57	-	-	▪
8015D-48	Nylon brush door sweep, 1.5" (38.1) long, Dark bronze anodized, 48" (1219.2)	\$79.42	-	-	
8191AA	Neoprene, Clear anodized	-	\$10.25	\$33.63	▪
8191BK	Neoprene, Black anodized	-	\$14.46	\$47.44	
8191D	Neoprene, Dark bronze anodized	-	\$14.46	\$47.44	
8191G	Neoprene, Gold anodized	-	\$14.46	\$47.44	
8192AA	Brush, Clear anodized, 5/8" (15.9) long	-	\$8.27	\$27.13	▪
8192BK	Brush, Black anodized, 5/8" (15.9) long	-	\$11.77	\$38.62	▪
8192D	Brush, Dark bronze anodized, 5/8" (15.9) long	-	\$11.77	\$38.62	
8192G	Brush, Gold anodized, 5/8" (15.9) long	-	\$11.77	\$38.62	
8193AA	Brush, Clear anodized, 3/8" (9.5) long	-	\$7.45	\$24.44	▪
8193BK	Brush, Black anodized, 3/8" (9.5) long	-	\$9.44	\$30.97	
8193D	Brush, Dark bronze anodized, 3/8" (9.5) long	-	\$9.44	\$30.97	

Stocked FastTrack products will ship in 5 business days or less when ordered through FastTrack. The FastTrack ordering process does not apply to Canada. Items in Bold indicate new Zero products (available as of Q3 2025).

THRESHOLDS

AUTOMATIC DOOR BOTTOMS

PERIMETER SEALS

WEATHERSTRIPPING

SOLUTIONS & SPECIALTY PRODUCTS

PARTS



DOOR SWEEPS		LIST PRICE			FastTrack
Part number	Description	Each	Per Foot	Per Meter	Stocked
8193G	Brush, Gold anodized, 3/8" (9.5) long	-	\$9.44	\$30.97	
8193P	Replacement pile brush, 126" (3.2 m) - for model 8193	-	\$5.61	\$18.41	
8194AA	Neoprene lip/adhesive, Clear anodized	-	\$7.45	\$24.44	▪
8194BK	Neoprene lip, Black anodized	-	\$9.44	\$30.97	
8194D	Neoprene lip, Dark bronze anodized	-	\$9.44	\$30.97	
8194G	Neoprene lip, Gold anodized	-	\$9.44	\$30.97	
8194N	Lip seal, EPDM, 0.53" (13.5) long	-	\$4.15	\$13.62	
8197AA	Drip cap, neoprene, Clear anodized	-	\$9.89	\$32.45	▪
8197BK	Drip cap, neoprene, Black anodized	-	\$13.95	\$45.77	
8197D	Drip cap, neoprene, Dark bronze anodized	-	\$13.95	\$45.77	
8197G	Drip cap, neoprene, Gold anodized	-	\$13.95	\$45.77	
8198AA	Drip cap/brush seal, Clear anodized	-	\$10.74	\$35.24	▪
8198BK	Drip cap/brush seal, Black anodized	-	\$15.13	\$49.64	▪
8198D	Drip cap/brush seal, Dark bronze anodized	-	\$15.13	\$49.64	▪
8198G	Drip cap/brush seal, Gold anodized	-	\$15.13	\$49.64	
8198P	Nylon brush, 5/8" (15.9)	-	\$7.50	\$24.61	
9091VA-36	Vinyl seal door sweep, Aluminum, 36" (914.4)	\$12.70	-	-	▪
9091VA-48	Vinyl seal door sweep, Aluminum, 48" (1219.2)	\$16.93	-	-	
9091VAA-36	Vinyl seal door sweep, Clear anodized, 36" (914.4)	\$17.56	-	-	▪
9091VAA-48	Vinyl seal door sweep, Clear anodized, 48" (1219.2)	\$23.41	-	-	
9091VBK-36	Vinyl seal door sweep, Black anodized, 36" (914.4)	\$28.84	-	-	▪
9091VBK-48	Vinyl seal door sweep, Black anodized, 48" (1219.2)	\$38.46	-	-	
9091VD-36	Vinyl seal door sweep, Dark bronze anodized, 36" (914.4)	\$19.75	-	-	
9091VD-48	Vinyl seal door sweep, Dark bronze anodized, 48" (1219.2)	\$26.33	-	-	
9097VA-36	Vinyl seal door sweep with rain drip, Aluminum, 36" (914.4)	\$18.18	-	-	▪
9097VA-48	Vinyl seal door sweep with rain drip, Aluminum, 48" (1219.2)	\$24.24	-	-	
9097VAA-36	Vinyl seal door sweep with rain drip, Clear anodized, 36" (914.4)	\$21.95	-	-	▪
9097VAA-48	Vinyl seal door sweep with rain drip, Clear anodized, 48" (1219.2)	\$29.26	-	-	
9097VBK-36	Vinyl seal door sweep with rain drip, Black anodized, 36" (914.4)	\$35.27	-	-	▪
9097VBK-48	Vinyl seal door sweep with rain drip, Black anodized, 48" (1219.2)	\$47.03	-	-	
9097VD-36	Vinyl seal door sweep with rain drip, Dark bronze anodized, 36" (914.4)	\$26.96	-	-	
9097VD-48	Vinyl seal door sweep with rain drip, Dark bronze anodized, 48" (1219.2)	\$35.95	-	-	

DOOR SHOES		LIST PRICE			FastTrack
Part number	Description	Each	Per Foot	Per Meter	Stocked
52A	Neoprene with Aluminum track, 1-7/16" (36.5)	-	\$16.29	\$53.44	
52N	Track seal, neoprene, 1.64" (41.7) wide	-	\$8.54	\$28.02	
53A	Neoprene with Aluminum track, 3/4" (19.1)	-	\$12.41	\$40.72	
53N	Track seal, neoprene, 1.06" (27) wide	-	\$6.76	\$22.18	
59FS-A	Intumescent, neoprene blade PSA, Aluminum	-	\$26.79	\$87.89	
72A	Neoprene with Aluminum track	-	\$19.86	\$65.16	
72N	Neoprene strip, 2-5/8" (66.7) wide	-	\$11.88	\$38.98	
110AA	Door shoe/pile, Clear anodized	-	\$17.38	\$57.02	
110BK	Door shoe/pile, Black anodized	-	\$24.90	\$81.69	
110D	Door shoe/pile, Dark bronze anodized	-	\$24.90	\$81.69	
110G	Door shoe/pile, Gold anodized	-	\$24.90	\$81.69	

Stocked FastTrack products will ship in 5 business days or less when ordered through FastTrack. The FastTrack ordering process does not apply to Canada. Items in Bold indicate new Zero products (available as of Q3 2025).

THRESHOLDS

AUTOMATIC DOOR BOTTOMS

PERIMETER SEALS

WEATHERSTRIPPING

SOLUTIONS & SPECIALTY PRODUCTS

PARTS



DOOR SHOES		LIST PRICE			FastTrack
Part number	Description	Each	Per Foot	Per Meter	Stocked
111AA	Door shoe, neoprene, Clear anodized	-	\$17.38	\$57.02	▪
111BK	Door shoe, neoprene, Black anodized	-	\$24.90	\$81.69	
111D	Door shoe, neoprene, Dark bronze anodized	-	\$24.90	\$81.69	
111FS-AA	Door shoe, intumescent, Clear anodized	-	\$18.87	\$61.91	
111FS-BK	Door shoe, intumescent, Black anodized	-	\$27.33	\$89.67	
111FS-D	Door shoe, intumescent, Dark bronze anodized	-	\$27.33	\$89.67	
153A	Neoprene, Aluminum	-	\$15.64	\$51.31	
153BK	Neoprene, Black anodized	-	\$24.29	\$79.69	
153D	Neoprene, Dark bronze anodized	-	\$24.29	\$79.69	
153G	Neoprene, Gold anodized	-	\$24.29	\$79.69	
153N	Thin neoprene - five finger extrusion	-	\$8.14	\$26.71	
154A	Angle track/pile, Aluminum	-	\$17.89	\$58.69	
154BK	Angle track/pile, Black anodized	-	\$24.73	\$81.14	
154D	Angle track/pile, Dark bronze anodized	-	\$24.73	\$81.14	
154G	Angle track/pile, Gold anodized	-	\$24.73	\$81.14	
253A	Mortised neoprene insert, Aluminum	-	\$9.33	\$30.61	
253FS-A	Mortised intumescent fire stop, Aluminum	-	\$27.54	\$90.35	
254A	Mortised track/pile insert, Aluminum	-	\$10.05	\$32.97	
254P-GY	Poly pile, 7/8" (22.2) wide	-	\$8.38	\$27.49	
254P-GY PSA	Poly pile, PSA, 7/8" (22.2) wide	-	\$9.22	\$30.25	
381A	Double neoprene lip, Aluminum	-	\$12.87	\$42.22	
452A	Neoprene, Aluminum track	-	\$17.14	\$56.23	
511A	Rubber, Aluminum, 1/16" (1.6) thick	-	\$18.29	\$60.01	
511BK	Rubber, Black anodized, 1/16" (1.6) thick	-	\$25.84	\$84.78	
511D	Rubber, Dark bronze anodized, 1/16" (1.6) thick	-	\$25.84	\$84.78	
511G	Rubber, Gold anodized, 1/16" (1.6) thick	-	\$25.84	\$84.78	
521FS-A	Intumescent/flame retardant silicone for undercut doors, Aluminum	-	\$36.04	\$118.24	
3544	Mortised brush, Aluminum	-	\$12.25	\$40.19	
3546	Mortised neoprene, Aluminum - FLO option available	-	\$12.25	\$40.19	
8047R	Replacement EPDM rubber seal for overhead door	-	\$7.42	\$24.34	
8049R	EPDM rubber seal for overhead doors with aluminum mounting strip	-	\$9.08	\$29.79	
8149AA	Mortised brush, Clear anodized	-	\$10.35	\$33.96	
8151AA	Neoprene, Aluminum	-	\$10.70	\$35.10	
9011VA-36	Vinyl seal door shoe, Aluminum, 36" (914.4)	\$24.61	-	-	▪
9011VA-48	Vinyl seal door shoe, Aluminum, 48" (1219.2)	\$32.81	-	-	
9011VAA-36	Vinyl seal door shoe, Clear anodized, 36" (914.4)	\$32.92	-	-	▪
9011VAA-48	Vinyl seal door shoe, Clear anodized, 48" (1219.2)	\$43.89	-	-	
9011VBK-36	Vinyl seal door shoe, Black anodized, 36" (914.4)	\$54.86	-	-	▪
9011VBK-48	Vinyl seal door shoe, Black anodized, 48" (1219.2)	\$73.15	-	-	
9011VD-36	Vinyl seal door shoe, Dark bronze anodized, 36" (914.4)	\$42.32	-	-	
9011VD-48	Vinyl seal door shoe, Dark bronze anodized, 48" (1219.2)	\$56.43	-	-	
9016VA-36	Vinyl seal door shoe with rain drip, Aluminum, 36" (914.4)	\$30.57	-	-	▪
9016VA-48	Vinyl seal door shoe with rain drip, Aluminum, 48" (1219.2)	\$40.76	-	-	
9016VAA-36	Vinyl seal door shoe with rain drip, Clear anodized, 36" (914.4)	\$36.05	-	-	▪
9016VAA-48	Vinyl seal door shoe with rain drip, Clear anodized, 48" (1219.2)	\$48.07	-	-	
9016VBK-36	Vinyl seal door shoe with rain drip, Black anodized, 36" (914.4)	\$58.78	-	-	▪

Stocked FastTrack products will ship in 5 business days or less when ordered through FastTrack. The FastTrack ordering process does not apply to Canada. Items in Bold indicate new Zero products (available as of Q3 2025).

THRESHOLDS

AUTOMATIC DOOR BOTTOMS

PERIMETER SEALS

WEATHERSTRIPPING

SOLUTIONS & SPECIALTY PRODUCTS

PARTS



DOOR SHOES		LIST PRICE			FastTrack
Part number	Description	Each	Per Foot	Per Meter	Stocked
9016VBK-48	Vinyl seal door shoe with rain drip, Black anodized, 48" (1219.2)	\$78.38	-	-	
9016VD-36	Vinyl seal door shoe with rain drip, Dark bronze anodized, 36" (914.4)	\$47.03	-	-	
9016VD-48	Vinyl seal door shoe with rain drip, Dark bronze anodized, 48" (1219.2)	\$62.70	-	-	

ADJUSTABLE SEALING SYSTEMS - JAMB-APPLIED		LIST PRICE		FastTrack
Part number	Description	Per Foot	Per Meter	Stocked
170AA ¹	Adjustable sound seal, Clear anodized	\$36.27	\$119.00	
170BK ¹	Adjustable sound seal, Black anodized	\$49.32	\$161.81	
170D ¹	Adjustable sound seal, Dark bronze anodized	\$49.32	\$161.81	
170G ¹	Adjustable sound seal, Gold anodized	\$49.32	\$161.81	
712AA	Adjustable/spring loaded/silicone insert, Clear anodized	\$34.04	\$111.68	
712BK	Adjustable/spring loaded/silicone insert, Black anodized	\$51.29	\$168.27	
712D	Adjustable/spring loaded/silicone insert, Dark bronze anodized	\$51.29	\$168.27	
712G	Adjustable/spring loaded/silicone insert, Gold anodized	\$51.29	\$168.27	
770AA ¹	Adjustable sound seal, Clear anodized	\$44.88	\$147.24	
770BK ¹	Adjustable sound seal, neoprene, Black anodized	\$57.48	\$188.58	
770D ¹	Adjustable sound seal, neoprene, Dark bronze anodized	\$57.48	\$188.58	
770G ¹	Adjustable sound seal, neoprene, Gold anodized	\$57.48	\$188.58	
770SP ¹	Adjustable sound seal for cased opening, Fire rated, Steel prime	\$63.17	\$207.25	
770STST ¹	Adjustable sound seal, Stainless steel	\$119.05	\$390.58	
770FS-AA ¹	Intumescent fire stop, neoprene, Clear anodized	\$66.83	\$219.26	
770FS-BK ¹	Intumescent fire stop, neoprene, Black anodized	\$80.25	\$263.29	
770FS-D ¹	Intumescent fire stop, neoprene, Dark bronze anodized	\$80.25	\$263.29	
770FS-G ¹	Intumescent fire stop, neoprene, Gold anodized	\$80.25	\$263.29	
870AA	Silicone, adjustable, Clear anodized	\$27.89	\$91.50	▪
870BK	Silicone, adjustable, Black anodized	\$42.87	\$140.65	
870D	Silicone, adjustable, Dark bronze anodized	\$42.87	\$140.65	
870G	Silicone, adjustable, Gold anodized	\$42.87	\$140.65	
870S-BK	Silicone bulb seal, 0.361" (9.2) wide	\$9.35	\$30.68	
871AA	Adjustable pile brush, Clear anodized	\$27.89	\$91.50	
871BK	Adjustable pile brush, Black anodized	\$42.87	\$140.65	
871D	Adjustable pile brush, Dark bronze anodized	\$42.87	\$140.65	
871G	Adjustable pile brush, Gold anodized	\$42.87	\$140.65	
873AA	Adjustable neoprene lip, Clear anodized	\$27.89	\$91.50	
873BK	Adjustable neoprene lip, Black anodized	\$42.87	\$140.65	
873D	Adjustable neoprene lip, Dark bronze anodized	\$42.87	\$140.65	
873G	Adjustable neoprene lip, Gold anodized	\$42.87	\$140.65	
7770AA ¹	Adjustable sound seal, Clear anodized	\$45.96	\$150.79	
7770BK ¹	Adjustable sound seal, Black anodized	\$60.31	\$197.87	
7770D ¹	Adjustable sound seal, Dark bronze anodized	\$60.31	\$197.87	
7770G ¹	Adjustable sound seal, Gold anodized	\$60.31	\$197.87	
7770N	Elongated bulb seal, neoprene, 0.32" (8.1) wide	\$4.80	\$15.75	

1. Comes standard with mitered corners when ordered as a set. If non-mitered corners is wanted, please specify and order as individual stick length.

Stocked FastTrack products will ship in 5 business days or less when ordered through FastTrack. The FastTrack ordering process does not apply to Canada. Items in Bold indicate new Zero products (available as of Q3 2025).

THRESHOLDS
AUTOMATIC DOOR BOTTOMS
PERIMETER SEALS
WEATHERSTRIPPING
SOLUTIONS & SPECIALTY PRODUCTS
PARTS



HEAD & JAMB GASKETING		LIST PRICE			FastTrack
Part number	Description	Each	Per Foot	Per Meter	Stocked
31AA	Bumper strip, silicone, Clear anodized	-	\$12.42	\$40.75	
31BK	Bumper strip, silicone, Black anodized	-	\$18.11	\$59.42	
31D	Bumper strip, silicone, Dark bronze anodized	-	\$18.11	\$59.42	
31G	Bumper strip, silicone, Gold anodized	-	\$18.11	\$59.42	
32AA	Bumper strip/brush, Clear anodized	-	\$12.42	\$40.75	
32BK	Bumper strip/brush, Black anodized	-	\$18.11	\$59.42	
32D	Bumper strip/brush, Dark bronze anodized	-	\$18.11	\$59.42	
32G	Bumper strip/brush, Gold anodized	-	\$18.11	\$59.42	
32P-BK	Self adhesive pile brush, Black	-	\$3.22	\$10.56	
32P-GY	Self adhesive pile brush, Gray	-	\$3.22	\$10.56	
33AA	Silicone lip, Clear anodized	-	\$12.42	\$40.75	
33BK	Silicone lip, Black anodized	-	\$18.11	\$59.42	
33D	Silicone lip, Dark bronze anodized	-	\$18.11	\$59.42	
33G	Silicone lip, Gold anodized	-	\$18.11	\$59.42	
50AA	Neoprene, Aluminum	-	\$10.05	\$32.97	
50BK	Neoprene, Black anodized	-	\$14.38	\$47.18	
50D	Neoprene, Dark bronze anodized	-	\$14.38	\$47.18	
50G	Neoprene, Gold anodized	-	\$14.38	\$47.18	
58FS-AA	Intumescent fire stop, Clear anodized	-	\$16.57	\$54.36	
58FS-BK	Intumescent fire stop, Black anodized	-	\$21.72	\$71.26	
58FS-D	Intumescent fire stop, Dark bronze anodized	-	\$21.72	\$71.26	
58FS-G	Intumescent fire stop, Gold anodized	-	\$21.72	\$71.26	
98A	Pile, Aluminum	-	\$11.06	\$36.29	
98BK	Brush, Black anodized	-	\$16.82	\$55.18	
98D	Brush, Dark bronze anodized	-	\$16.82	\$55.18	
98G	Brush, Gold anodized	-	\$16.82	\$55.18	
99A	Silicone, Aluminum	-	\$11.06	\$36.29	
99BK	Silicone, Black anodized	-	\$16.93	\$55.54	
99D	Silicone, Dark bronze anodized	-	\$16.93	\$55.54	
99G	Silicone, Gold anodized	-	\$16.93	\$55.54	
100A	Silicone lip, Aluminum	-	\$11.06	\$36.29	
100BK	Silicone lip, Black anodized	-	\$16.82	\$55.18	
100D	Silicone lip, Dark bronze anodized	-	\$16.82	\$55.18	
100G	Silicone lip, Gold anodized	-	\$16.82	\$55.18	
139A	Neoprene, Aluminum	-	\$12.05	\$39.53	
139BK	Neoprene, Black anodized	-	\$16.67	\$54.69	
139D	Neoprene, Dark bronze anodized	-	\$16.67	\$54.69	
139G	Neoprene, Gold anodized	-	\$16.67	\$54.69	
140A	Neoprene, Aluminum	-	\$15.26	\$50.07	
140BK	Neoprene, Black anodized	-	\$21.85	\$71.69	
140D	Neoprene, Dark bronze anodized	-	\$21.85	\$71.69	
140G	Neoprene, Gold anodized	-	\$21.85	\$71.69	
270A	Door stop, neoprene, Aluminum	-	\$15.70	\$51.51	
270BK	Door stop, neoprene, Black anodized	-	\$22.29	\$73.13	
270D	Door stop, neoprene, Dark bronze anodized	-	\$22.29	\$73.13	
270G	Door stop, neoprene, Gold anodized	-	\$22.29	\$73.13	

Stocked FastTrack products will ship in 5 business days or less when ordered through FastTrack. The FastTrack ordering process does not apply to Canada. Items in Bold indicate new Zero products (available as of Q3 2025).

THRESHOLDS

AUTOMATIC DOOR BOTTOMS

PERIMETER SEALS

WEATHERSTRIPPING

SOLUTIONS & SPECIALTY PRODUCTS

PARTS



HEAD & JAMB GASKETING		LIST PRICE			FastTrack
Part number	Description	Each	Per Foot	Per Meter	Stocked
272A	Door stop, neoprene, Aluminum	-	\$15.70	\$51.51	
272BK	Door stop, neoprene, Black anodized	-	\$22.29	\$73.13	
272D	Door stop, neoprene, Dark bronze anodized	-	\$22.29	\$73.13	
272G	Door stop, neoprene, Gold anodized	-	\$22.29	\$73.13	
302FS-AA	Intumescent fire stop, neoprene, Clear anodized	-	\$14.55	\$47.74	
302FS-B	Intumescent fire stop, neoprene, Bronze	-	\$39.30	\$128.94	
302FS-BK	Intumescent fire stop, neoprene, Black anodized	-	\$19.74	\$64.76	
302FS-D	Intumescent fire stop, neoprene, Dark bronze anodized	-	\$19.74	\$64.76	
302FS-G	Intumescent fire stop, neoprene, Gold anodized	-	\$19.74	\$64.76	
312A	Neoprene, Aluminum	-	\$8.50	\$27.89	
312BK	Neoprene, Black anodized	-	\$12.29	\$40.32	
312D	Neoprene, Dark bronze anodized	-	\$12.29	\$40.32	
312G	Neoprene, Gold anodized	-	\$12.29	\$40.32	
314AA	Neoprene, Clear anodized	-	\$13.47	\$44.19	
314B	Neoprene, Bronze	-	\$34.05	\$111.71	
314BK	Neoprene, Black anodized	-	\$15.88	\$52.10	
314D	Neoprene, Dark bronze anodized	-	\$15.88	\$52.10	
314G	Neoprene, Gold anodized	-	\$15.88	\$52.10	
314N	Closed cell sponge, neoprene, rectangular extrusion, 3/4" x 1/8" (19.1 x 3.2)	-	\$3.73	\$12.24	
314N-PSA	Closed cell sponge, neoprene, rectangular extrusion with PSA, 3/4" x 1/8" (19.1 x 3.2)	-	\$3.73	\$12.24	
318AA	Neoprene, Clear anodized	-	\$15.86	\$52.03	
318BK	Neoprene, Black anodized	-	\$18.11	\$59.42	
318D	Neoprene, Dark bronze anodized	-	\$18.11	\$59.42	
318G	Neoprene, Gold anodized	-	\$18.11	\$59.42	
322A	Neoprene, Aluminum	-	\$15.86	\$52.03	
322BK	Neoprene, Black anodized	-	\$22.84	\$74.93	
322D	Neoprene, Dark bronze anodized	-	\$22.84	\$74.93	
322G	Neoprene, Gold anodized	-	\$22.84	\$74.93	
326AA	Neoprene, Clear anodized	-	\$14.50	\$47.57	
326B	Neoprene, Bronze	-	\$37.10	\$121.72	
326BK	Neoprene, Black anodized	-	\$20.10	\$65.94	
326D	Neoprene, Dark bronze anodized	-	\$20.10	\$65.94	
326G	Neoprene, Gold anodized	-	\$20.10	\$65.94	
326N	Dual bulb and lip seal, neoprene, 1.006" (25.6) wide	-	\$8.05	\$26.41	
328AA	Neoprene, Clear anodized	-	\$14.04	\$46.06	▪
328B	Neoprene, Bronze	-	\$34.05	\$111.71	
328BK	Neoprene, Black anodized	-	\$19.49	\$63.94	
328D	Neoprene, Dark bronze anodized	-	\$19.49	\$63.94	
328G	Neoprene, Gold anodized	-	\$19.49	\$63.94	
328FS-AA	Intumescent fire stop, neoprene, Clear anodized	-	\$20.73	\$68.01	
328FS-BK	Intumescent fire stop, neoprene, Black anodized	-	\$28.23	\$92.62	
328FS-D	Intumescent fire stop, neoprene, Dark bronze anodized	-	\$28.23	\$92.62	
328FS-G	Intumescent fire stop, neoprene, Gold anodized	-	\$27.97	\$91.77	
328N	Neoprene insert, 7/8" (22.2) wide	-	\$7.03	\$23.06	
376AA	Snap-on cover, neoprene, Clear anodized	-	\$19.37	\$63.55	
376BK	Snap-on cover, neoprene, Black anodized	-	\$26.62	\$87.34	

Stocked FastTrack products will ship in 5 business days or less when ordered through FastTrack. The FastTrack ordering process does not apply to Canada. Items in Bold indicate new Zero products (available as of Q3 2025).

THRESHOLDS

AUTOMATIC DOOR BOTTOMS

PERIMETER SEALS

WEATHERSTRIPPING

SOLUTIONS & SPECIALTY PRODUCTS

PARTS



HEAD & JAMB GASKETING		LIST PRICE			FastTrack
Part number	Description	Each	Per Foot	Per Meter	Stocked
376D	Snap-on cover, neoprene, Dark bronze anodized	-	\$26.62	\$87.34	
376G	Snap-on cover, neoprene, Gold anodized	-	\$26.62	\$87.34	
429AA	Silicone gasket for use with coordinator or closer bracket, Clear anodized	-	\$16.86	\$55.31	▪
429BK	Silicone gasket for use with coordinator or closer bracket, Black anodized	-	\$24.56	\$80.58	
429D	Silicone gasket for use with coordinator or closer bracket, Dark bronze anodized	-	\$24.56	\$80.58	
429G	Silicone gasket for use with coordinator or closer bracket, Gold anodized	-	\$24.56	\$80.58	
470AA	Security seal, neoprene, Clear anodized	-	\$26.58	\$87.20	
470BK	Security seal, neoprene, Black anodized	-	\$35.85	\$117.62	
470D	Security seal, neoprene, Dark bronze anodized	-	\$35.85	\$117.62	
470G	Security seal, neoprene, Gold anodized	-	\$35.85	\$117.62	
472AA	Security seal, neoprene, Clear anodized	-	\$32.88	\$107.87	
472BK	Security seal, neoprene, Black anodized	-	\$46.15	\$151.41	
472D	Security seal, neoprene, Dark bronze anodized	-	\$46.15	\$151.41	
472G	Security seal, neoprene, Gold anodized	-	\$46.15	\$151.41	
475AA	Snap-on cover, neoprene, Clear anodized	-	\$13.94	\$45.73	▪
475BK	Snap-on cover, neoprene, Black anodized	-	\$21.00	\$68.90	
475D	Snap-on cover, neoprene, Dark bronze anodized	-	\$21.00	\$68.90	
475G	Snap-on cover, neoprene, Gold anodized	-	\$21.00	\$68.90	
478AA	Snap-on cover, double neoprene, Clear anodized	-	\$19.61	\$64.34	
478BK	Snap-on cover, double neoprene, Black anodized	-	\$26.99	\$88.55	
478D	Snap-on cover, double neoprene, Dark bronze anodized	-	\$26.99	\$88.55	
478G	Snap-on cover, double neoprene, Gold anodized	-	\$26.99	\$88.55	
485AA	Neoprene, Aluminum	-	\$9.44	\$30.97	
485BK	Neoprene, Black anodized	-	\$14.87	\$48.79	
485D	Neoprene, Dark bronze anodized	-	\$14.87	\$48.79	
485G	Neoprene, Gold anodized	-	\$14.87	\$48.79	
570AA	Self-adjusting, silicone, Clear anodized	-	\$21.51	\$70.57	
570BK	Self-adjusting, silicone, Black anodized	-	\$30.00	\$98.43	
570D	Self-adjusting, silicone, Dark bronze anodized	-	\$30.00	\$98.43	
570G	Self-adjusting, silicone, Gold anodized	-	\$30.00	\$98.43	
570S-BK	Semi-circular bulb kerf seal, silicone, Black, 0.328" (8.3)	-	\$4.13	\$13.55	
1370A	Neoprene, Aluminum	-	\$16.39	\$53.77	
1370BK	Neoprene, Black anodized	-	\$22.54	\$73.95	
1370D	Neoprene, Dark bronze anodized	-	\$22.54	\$73.95	
1370G	Neoprene, Gold anodized	-	\$22.54	\$73.95	
1370N	Five finger sponge, neoprene, extrusion, 1/2" (12.7) wide	-	\$4.04	\$13.25	
3709AA	Sound trap, neoprene, Clear anodized	-	\$46.08	\$151.18	
3709BK	Sound trap, neoprene, Black anodized	-	\$61.45	\$201.61	
3709D	Sound trap, neoprene, Dark bronze anodized	-	\$61.45	\$201.61	
3709G	Sound trap, neoprene, Gold anodized	-	\$61.45	\$201.61	
5831AA	Silicone, PSA, Clear anodized	-	\$9.23	\$30.28	
5831BK	Silicone, PSA, Black anodized	-	\$11.87	\$38.94	
5831D	Silicone, PSA, Dark bronze anodized	-	\$11.87	\$38.94	
5831G	Silicone, PSA, Gold anodized	-	\$11.87	\$38.94	
5831FS-AA	Intumescent/silicone/PSA, Clear anodized	-	\$13.40	\$43.96	
5831FS-BK	Intumescent/silicone/PSA, Black anodized	-	\$16.45	\$53.97	

Stocked FastTrack products will ship in 5 business days or less when ordered through FastTrack. The FastTrack ordering process does not apply to Canada. Items in Bold indicate new Zero products (available as of Q3 2025).

THRESHOLDS

AUTOMATIC DOOR BOTTOMS

PERIMETER SEALS

WEATHERSTRIPPING

SOLUTIONS & SPECIALTY PRODUCTS

PARTS



HEAD & JAMB GASKETING		LIST PRICE			FastTrack
Part number	Description	Each	Per Foot	Per Meter	Stocked
5831FS-D	Intumescent/silicone/PSA, Dark bronze anodized	-	\$16.45	\$53.97	
5831FS-G	Intumescent/silicone/PSA, Gold anodized	-	\$16.45	\$53.97	
5831S-BK	Lip and bulb seal, silicone, Black anodized, 0.36" (9.1) wide	-	\$9.07	\$29.76	
5832AA	Poly brush/PSA, Clear anodized	-	\$9.49	\$31.14	
5832BK	Poly brush/PSA, Black anodized	-	\$11.87	\$38.94	
5832D	Poly brush/PSA, Dark bronze anodized	-	\$11.87	\$38.94	
5832G	Poly brush/PSA, Gold anodized	-	\$11.87	\$38.94	
5832FS-AA	Poly brush/intumescent/PSA, Clear anodized	-	\$13.73	\$45.05	
5832FS-BK	Poly brush/intumescent/PSA, Black anodized	-	\$16.45	\$53.97	
5832FS-D	Poly brush/intumescent/PSA, Dark bronze anodized	-	\$16.45	\$53.97	
5832FS-G	Poly brush/intumescent/PSA, Gold anodized	-	\$16.45	\$53.97	
5833AA	Silicone/PSA, Clear anodized	-	\$9.23	\$30.28	
5833BK	Silicone/PSA, Black anodized	-	\$11.87	\$38.94	
5833D	Silicone/PSA, Dark bronze anodized	-	\$11.87	\$38.94	
5833G	Silicone/PSA, Gold anodized	-	\$11.87	\$38.94	
8193AA-PSA	Brush, adhesive, Clear anodized, 3/8" (9.5)	-	\$9.78	\$32.09	
8193BK-PSA	Brush, adhesive, Black anodized, 3/8" (9.5)	-	\$11.97	\$39.27	
8193D-PSA	Brush, adhesive, Dark bronze anodized, 3/8" (9.5)	-	\$11.97	\$39.27	
8193G-PSA	Brush, adhesive, Gold anodized, 3/8" (9.5)	-	\$11.97	\$39.27	
8302AA	Neoprene seal, Clear anodized	-	\$5.06	\$16.60	
8302BK	Neoprene seal, Black anodized	-	\$8.38	\$27.49	
8302D	Neoprene seal, Dark bronze anodized	-	\$8.38	\$27.49	
8302G	Neoprene seal, Gold anodized	-	\$8.38	\$27.49	
8302N	45° Leg seal, neoprene	-	\$3.54	\$11.61	
8303AA	Neoprene seal, Clear anodized	-	\$5.54	\$18.18	▪
8303BK	Neoprene seal, Black anodized	-	\$9.15	\$30.02	
8303D	Neoprene seal, Dark bronze anodized	-	\$9.15	\$30.02	
8303G	Neoprene seal, Gold anodized	-	\$9.15	\$30.02	
8303S-BK	Bulb seal, silicone, 1/4" (6.4)	-	\$2.54	\$8.33	
8305AA	Brush, Clear anodized	-	\$6.64	\$21.78	
8305BK	Brush, Black anodized	-	\$10.94	\$35.89	
8305D	Brush, Dark bronze anodized	-	\$10.94	\$35.89	
8305G	Brush, Gold anodized	-	\$10.94	\$35.89	
8877AA	Neoprene seal, Clear anodized	-	\$9.60	\$31.50	
8877BK	Neoprene seal, Black anodized	-	\$13.76	\$45.14	
8877D	Neoprene seal, Dark bronze anodized	-	\$13.76	\$45.14	
8877G	Neoprene seal, Gold anodized	-	\$13.76	\$45.14	
8878AA	Silicone seal, Clear anodized	-	\$9.23	\$30.28	
8878BK	Silicone seal, Black anodized	-	\$13.17	\$43.21	
8878D	Silicone seal, Dark bronze anodized	-	\$13.17	\$43.21	
8878G	Silicone seal, Gold anodized	-	\$13.17	\$43.21	
8878BIO-BR	Snap-on cover/silicone-bio, Brown, 0.36" (9.1) wide	-	\$4.04	\$13.25	
8879AA	Brush seal, Clear anodized	-	\$10.40	\$34.12	
8879BK	Brush seal, Black anodized	-	\$14.89	\$48.85	
8879D	Brush seal, Dark bronze anodized	-	\$14.89	\$48.85	
8879G	Brush seal, Gold anodized	-	\$14.89	\$48.85	

Stocked FastTrack products will ship in 5 business days or less when ordered through FastTrack. The FastTrack ordering process does not apply to Canada. Items in Bold indicate new Zero products (available as of Q3 2025).

THRESHOLDS

AUTOMATIC DOOR BOTTOMS

PERIMETER SEALS

WEATHERSTRIPPING

SOLUTIONS & SPECIALTY PRODUCTS

PARTS



THRESHOLDS

AUTOMATIC DOOR BOTTOMS

PERIMETER SEALS

WEATHERSTRIPPING

SOLUTIONS & SPECIALTY PRODUCTS

PARTS

HEAD & JAMB GASKETING		LIST PRICE			FastTrack
Part number	Description	Each	Per Foot	Per Meter	Stocked
9003VA-36	Vinyl seal, Aluminum, 36" (914.4)	\$8.46	-	-	▪
9003VA-48	Vinyl seal, Aluminum, 48" (1219.2)	\$11.29	-	-	
9003VA-84	Vinyl seal, Aluminum, 84" (2133.6)	\$19.75	-	-	▪
9003VA-3684	Vinyl seal, Aluminum, 36" x 84" set (914.4 x 2133.6)	\$47.97	-	-	▪
9003VAA-36	Vinyl seal, Clear anodized, 36" (914.4)	\$13.32	-	-	▪
9003VAA-48	Vinyl seal, Clear anodized, 48" (1219.2)	\$17.77	-	-	
9003VAA-84	Vinyl seal, Clear anodized, 84" (2133.6)	\$31.09	-	-	▪
9003VAA-3684	Vinyl seal, Clear anodized, 36" x 84" set (914.4 x 2133.6)	\$75.50	-	-	▪
9003VBK-36	Vinyl seal, Black anodized, 36" (914.4)	\$25.55	-	-	▪
9003VBK-48	Vinyl seal, Black anodized, 48" (1219.2)	\$34.07	-	-	
9003VBK-84	Vinyl seal, Black anodized, 84" (2133.6)	\$59.62	-	-	
9003VBK-3684	Vinyl seal, Black anodized, 36" x 84" set (914.4 x 2133.6)	\$144.78	-	-	
9003VD-36	Vinyl seal Dark bronze anodized, 36" (914.4)	\$16.15	-	-	▪
9003VD-48	Vinyl seal Dark bronze anodized, 48" (1219.2)	\$21.53	-	-	
9003VD-84	Vinyl seal Dark bronze anodized, 84" (2133.6)	\$37.67	-	-	
9003VD-3684	Vinyl seal Dark bronze anodized, 36" x 84" set (914.4 x 2133.6)	\$91.49	-	-	

HEAD & JAMB GASKETING		LIST PRICE		FastTrack
Head & jamb FS3003 intumescent seals		Per Foot	Per Meter	Stocked
3062375PSA	FS3003 intumescent seal, 1/16" x 3/8" (1.6 x 9.5)	\$3.06	\$10.04	
3062500PSA	FS3003 intumescent seal, 1/16" x 1/2" (1.6 x 12.7)	\$3.24	\$10.63	
3062750PSA	FS3003 intumescent seal, 1/16" x 3/4" (1.6 x 19.1)	\$4.05	\$13.29	
30621000PSA	FS3003 intumescent seal, 1/16" x 1" (1.6 x 25.4)	\$5.40	\$17.72	
30621750PSA	FS3003 intumescent seal, 1/16" x 1-3/4" (1.6 x 44.5)	\$7.35	\$24.11	
30622000PSA	FS3003 intumescent seal, 1/16" x 2" (1.6 x 50.8)	\$8.40	\$27.56	
3125375PSA	FS3003 intumescent seal, 1/8" x 3/8" (3.2 x 9.5)	\$4.05	\$13.29	
3125500PSA	FS3003 intumescent seal, 1/8" x 1/2" (3.2 x 12.7)	\$5.40	\$17.72	
3125625PSA	FS3003 intumescent seal, 1/8" x 5/8" (3.2 x 15.9)	\$6.68	\$21.90	
3125750PSA	FS3003 intumescent seal, 1/8" x 3/4" (3.2 x 19.1)	\$7.02	\$23.03	
31251000PSA	FS3003 intumescent seal, 1/8" x 1" (3.2 x 25.4)	\$8.64	\$28.35	
31252000PSA	FS3003 intumescent seal, 1/8" x 2" (3.2 x 50.8)	\$13.20	\$43.31	
3250375PSA	FS3003 intumescent seal, 1/4" x 3/8" (6.4 x 9.5)	\$7.65	\$25.10	
3250500PSA	FS3003 intumescent seal, 1/4" x 1/2" (6.4 x 12.7)	\$8.76	\$28.74	
3250750PSA	FS3003 intumescent seal, 1/4" x 3/4" (6.4 x 19.1)	\$11.52	\$37.80	
32501000PSA	FS3003 intumescent seal, 1/4" x 1" (6.4 x 25.4)	\$14.28	\$46.85	
32502000PSA	FS3003 intumescent seal, 1/4" x 2" (6.4 x 50.8)	\$21.60	\$70.87	

MEETING STILES		LIST PRICE		FastTrack
Adjustable surface-mounted meeting stiles for beveled doors		Per Foot	Per Meter	Stocked
55AA	Adjustable surface astragal, solid insert, intumescent, Clear anodized	\$34.04	\$111.68	▪
55BK	Adjustable surface astragal, solid insert, intumescent, Black anodized	\$51.29	\$168.27	
55D	Adjustable surface astragal, solid insert, intumescent, Dark bronze anodized	\$51.29	\$168.27	
55G	Adjustable surface astragal, solid insert, intumescent, Gold anodized	\$51.29	\$168.27	

Follow NFPA 80 requirements for fire door clearances. See lves catalog for door coordinators.

Stocked FastTrack products will ship in 5 business days or less when ordered through FastTrack. The FastTrack ordering process does not apply to Canada. Items in Bold indicate new Zero products (available as of Q3 2025).



MEETING STILES Adjustable surface-mounted meeting stiles for beveled doors		LIST PRICE		FastTrack
Part number	Description	Per Foot	Per Meter	Stocked
55FS-AA	Adjustable surface astragal, solid insert, intumescent, Clear anodized	\$45.17	\$148.20	
55FS-BK	Adjustable surface astragal, solid insert, intumescent, Black anodized	\$58.23	\$191.04	
55FS-D	Adjustable surface astragal, solid insert, intumescent, Dark bronze anodized	\$58.23	\$191.04	
55FS-G	Adjustable surface astragal, solid insert, intumescent, Gold anodized	\$58.23	\$191.04	
155AA	Adjustable astragal, surface-mounted, pile brush, Clear anodized	\$35.72	\$117.19	
155BK	Adjustable astragal, surface-mounted, pile brush, Black anodized	\$53.86	\$176.71	
155D	Adjustable astragal, surface-mounted, pile brush, Dark bronze anodized	\$53.86	\$176.71	
155G	Adjustable astragal, surface-mounted, pile brush, Clear anodized	\$53.86	\$176.71	
555AA	Adjustable surface astragal, silicone insert, Clear anodized	\$35.62	\$116.86	
555BK	Adjustable surface astragal, silicone insert, Black anodized	\$53.64	\$175.98	
555D	Adjustable surface astragal, silicone insert, Dark bronze anodized	\$53.64	\$175.98	
555G	Adjustable surface astragal, silicone insert, Gold anodized	\$53.64	\$175.98	
555FS-AA	Adjustable surface astragal, silicone insert, intumescent, Clear anodized	\$47.29	\$155.15	
555FS-BK	Adjustable surface astragal, silicone insert, intumescent, Black anodized	\$59.28	\$194.49	
555FS-D	Adjustable surface astragal, silicone insert, intumescent, Dark bronze anodized	\$59.28	\$194.49	
555FS-G	Adjustable surface astragal, silicone insert, intumescent, Gold anodized	\$59.28	\$194.49	

Follow NPFA 80 requirements for fire door clearances. See Ives catalog for door coordinators.

ADJUSTABLE MORTISED MEETING STILES FOR BULL-NOSED DOORS		LIST PRICE		FastTrack
Part number	Description	Per Foot	Per Meter	Stocked
56AA	Adjustable mortised astragal, solid insert, intumescent, Clear anodized	\$34.04	\$111.68	
56BK	Adjustable mortised astragal, solid insert, intumescent, Black anodized	\$51.29	\$168.27	
56D	Adjustable mortised astragal, solid insert, intumescent, Dark bronze anodized	\$51.29	\$168.27	
56G	Adjustable mortised astragal, solid insert, intumescent, Gold anodized	\$51.29	\$168.27	
56FS-AA	Intumescent fire stop, Clear anodized	\$43.12	\$141.47	
56FS-BK	Intumescent fire stop, Black anodized	\$60.52	\$198.56	
56FS-D	Intumescent fire stop, Dark bronze anodized	\$60.52	\$198.56	
56FS-G	Intumescent fire stop, Gold anodized	\$60.52	\$198.56	
156AA	Adjustable mortised astragal, pile brush, Clear anodized	\$34.04	\$111.68	
156BK	Adjustable mortised astragal, pile brush, Black anodized	\$51.29	\$168.27	
156D	Adjustable mortised astragal, pile brush, Dark bronze anodized	\$51.29	\$168.27	
156G	Adjustable mortised astragal, pile brush, Gold anodized	\$51.29	\$168.27	
557AA	Adjustable mortised astragal, silicone insert, Clear anodized	\$34.04	\$111.68	
557BK	Adjustable mortised astragal, silicone insert, Black anodized	\$50.51	\$165.72	
557D	Adjustable mortised astragal, silicone insert, Dark bronze anodized	\$50.51	\$165.72	
557G	Adjustable mortised astragal, silicone insert, Gold anodized	\$50.51	\$165.72	
557FS-AA	Adjustable mortised astragal, silicone insert, intumescent, Clear anodized	\$43.12	\$141.47	
557FS-BK	Adjustable mortised astragal, silicone insert, intumescent, Black anodized	\$60.52	\$198.56	
557FS-D	Adjustable mortised astragal, silicone insert, intumescent, Dark bronze anodized	\$60.52	\$198.56	
557FS-G	Adjustable mortised astragal, silicone insert, intumescent, Gold anodized	\$60.52	\$198.56	
905A	Astragal, Aluminum	\$12.87	\$42.22	
905BK	Astragal, Black anodized	\$18.54	\$60.83	
905D	Astragal, Dark Bronze anodized	\$18.54	\$60.83	
905G	Astragal, Gold anodized	\$18.54	\$60.83	

Follow NPFA 80 requirements for fire door clearances. See Ives catalog for door coordinators.

Stocked FastTrack products will ship in 5 business days or less when ordered through FastTrack. The FastTrack ordering process does not apply to Canada. Items in Bold indicate new Zero products (available as of Q3 2025).

THRESHOLDS

AUTOMATIC DOOR BOTTOMS

PERIMETER SEALS

WEATHERSTRIPPING

SOLUTIONS & SPECIALTY PRODUCTS

PARTS



ADJUSTABLE MORTISED MEETING STILES FOR BULL-NOSED DOORS		LIST PRICE		FastTrack
Part number	Description	Per Foot	Per Meter	Stocked
1840AA	Interior astragal, neoprene, Clear anodized	\$18.10	\$59.38	
1840BK	Interior astragal, neoprene, Black anodized	\$25.20	\$82.68	
1840D	Interior astragal, neoprene, Dark Bronze anodized	\$25.20	\$82.68	
1840G	Interior astragal, neoprene, Gold anodized	\$25.20	\$82.68	
3056FS-AA	Adjustable mortised astragal, neoprene, intumescent fire stop, Clear anodized	\$62.39	\$204.69	
3056FS-BK	Adjustable mortised astragal, neoprene, intumescent fire stop, Black anodized	\$77.06	\$252.82	
3056FS-D	Adjustable mortised astragal, neoprene, intumescent fire stop, Dark Bronze anodized	\$77.06	\$252.82	
3056FS-G	Adjustable mortised astragal, neoprene, intumescent fire stop, Gold anodized	\$77.06	\$252.82	
3557FS-AA	Adjustable mortised astragal, silicone, intumescent fire stop, Clear anodized	\$62.39	\$204.69	
3557FS-BK	Adjustable mortised astragal, silicone, intumescent fire stop, Black anodized	\$77.06	\$252.82	
3557FS-D	Adjustable mortised astragal, silicone, intumescent fire stop, Dark Bronze anodized	\$77.06	\$252.82	
3557FS-G	Adjustable mortised astragal, silicone, intumescent fire stop, Gold anodized	\$77.06	\$252.82	

Follow NFPA 80 requirements for fire door clearances. See Ives catalog for door coordinators.

SURFACE-MOUNTED MEETING STILES FOR BEVELED DOORS, BOTH DOORS ACTIVE (For stile applications order two of each model, or mix and match models if desired.)		LIST PRICE		FastTrack
Part number	Description	Per Foot	Per Meter	Stocked
8192AA-PSA	Brush, adhesive, Clear anodized	\$10.72	\$35.17	
8192BK-PSA	Brush, adhesive, Black anodized	\$12.81	\$42.03	
8192D-PSA	Brush, adhesive, Dark Bronze anodized	\$12.81	\$42.03	
8192G-PSA	Brush, adhesive, Gold anodized	\$12.81	\$42.03	
8194AA-PSA	Neoprene lip, adhesive, Clear anodized	\$9.78	\$32.09	
8194BK-PSA	Neoprene lip, adhesive, Black anodized	\$11.97	\$39.27	
8194D-PSA	Neoprene lip, adhesive, Dark Bronze anodized	\$11.97	\$39.27	
8194G-PSA	Neoprene lip, adhesive, Gold anodized	\$11.97	\$39.27	
8195AA	Neoprene lip, Clear anodized	\$9.23	\$30.28	▪
8195BK	Neoprene lip, Black anodized	\$13.02	\$42.72	
8195D	Neoprene lip, Dark Bronze anodized	\$13.02	\$42.72	
8195G	Neoprene lip, Gold anodized	\$13.02	\$42.72	
8195AA-PSA	Neoprene lip, adhesive, Clear anodized	\$12.09	\$39.67	
8195BK-PSA	Neoprene lip, adhesive, Black anodized	\$17.27	\$56.66	
8195D-PSA	Neoprene lip, adhesive, Dark Bronze anodized	\$17.27	\$56.66	
8195G-PSA	Neoprene lip, adhesive, Gold anodized	\$17.27	\$56.66	
8879AA-PSA	Brush seal, adhesive, Clear anodized	\$11.68	\$38.32	
8879BK-PSA	Brush seal, adhesive, Black anodized	\$16.67	\$54.69	
8879D-PSA	Brush seal, adhesive, Dark Bronze anodized	\$16.67	\$54.69	
8879G-PSA	Brush seal, adhesive, Gold anodized	\$16.67	\$54.69	

Follow NFPA 80 requirements for fire door clearances. See Ives catalog for door coordinators.

MORTISED MEETING STILES FOR BULL-NOSED DOORS, BOTH DOORS ACTIVE		LIST PRICE		FastTrack
Part number	Description	Per Foot	Per Meter	Stocked
34AA	Brush, adjustable, Clear anodized	\$17.14	\$56.23	
34BK	Brush, adjustable, Black anodized	\$24.74	\$81.17	
34D	Brush, adjustable, Dark bronze anodized	\$24.74	\$81.17	
34G	Brush, adjustable, Gold anodized	\$24.74	\$81.17	

Follow NFPA 80 requirements for fire door clearances. See Ives catalog for door coordinators.

Stocked FastTrack products will ship in 5 business days or less when ordered through FastTrack. The FastTrack ordering process does not apply to Canada. Items in Bold indicate new Zero products (available as of Q3 2025).



MORTISED MEETING STILES FOR BULL-NOSED DOORS, BOTH DOORS ACTIVE		LIST PRICE		FastTrack
Part number	Description	Per Foot	Per Meter	Stocked
35AA	Silicone lip, adjustable, Clear anodized	\$17.14	\$56.23	
35BK	Silicone lip, adjustable, Black anodized	\$24.74	\$81.17	
35D	Silicone lip, adjustable, Dark bronze anodized	\$24.74	\$81.17	
35G	Silicone lip, adjustable, Gold anodized	\$24.74	\$81.17	
36AA	Silicone lip, adjustable, Clear anodized	\$16.91	\$55.48	
36BK	Silicone lip, adjustable, Black anodized	\$24.74	\$81.17	
36D	Silicone lip, adjustable, Dark bronze anodized	\$24.74	\$81.17	
36G	Silicone lip, adjustable, Gold anodized	\$24.74	\$81.17	
38AA	Solid insert, Clear anodized	\$16.91	\$55.48	
38BK	Solid insert, Black anodized	\$24.74	\$81.17	
38D	Solid insert, Dark bronze anodized	\$24.74	\$81.17	
38G	Solid insert, Gold anodized	\$24.74	\$81.17	
159FS-A	Intumescent fire stop, Aluminum track	\$23.37	\$76.67	
398V	Pile with fin seal, PSA, Solid PVC brown	\$10.83	\$35.53	▪
399V	Silicone lips, PSA, Solid PVC brown	\$10.83	\$35.53	
8217S-BK	Silicone lips, PSA, Black anodized	\$2.79	\$9.15	

Follow NFPA 80 requirements for fire door clearances. See Ives catalog for door coordinators.

ASTRAGALS One door active or coordinating doors		LIST PRICE		FastTrack
Part number	Description	Per Foot	Per Meter	Stocked
41AA	Security astragal, Clear anodized	\$24.53	\$80.48	
41BK	Security astragal, Dark bronze anodized	\$27.22	\$89.30	
41D	Security astragal, Dark bronze anodized	\$27.22	\$89.30	
41G	Security astragal, Gold anodized	\$27.22	\$89.30	
43SP	Astragal, Steel prime, 2-1/4" (57.2)	\$25.50	\$83.66	▪
43STST	Astragal, Stainless steel, 2-1/4" (57.2)	\$53.34	\$175.00	▪
44STST	Astragal, Stainless steel, 1-1/2" (38.1)	\$29.18	\$95.73	▪
47A	Astragal, Aluminum, 1-3/4" x 1/8" (44.5 x 3.2)	\$14.24	\$46.72	
47BK	Astragal, Black anodized, 1-3/4" x 1/8" (44.5 x 3.2)	\$20.27	\$66.50	
47D	Astragal, Dark bronze anodized, 1-3/4" x 1/8" (44.5 x 3.2)	\$20.27	\$66.50	
47G	Astragal, Gold anodized, 1-3/4" x 1/8" (44.5 x 3.2)	\$20.27	\$66.50	
383AA	Double neoprene, Clear anodized	\$17.50	\$57.41	▪
383BK	Double neoprene, Black anodized	\$20.48	\$67.19	
383D	Double neoprene, Dark bronze anodized	\$20.48	\$67.19	
383G	Double neoprene, Gold anodized	\$20.48	\$67.19	
383FS-AA	Neoprene/intumescent, Clear anodized	\$25.86	\$84.84	
383FS-BK	Neoprene/intumescent, Black anodized	\$36.03	\$118.21	
383FS-D	Neoprene/intumescent, Dark bronze anodized	\$36.03	\$118.21	
383FS-G	Neoprene/intumescent, Gold anodized	\$36.03	\$118.21	
383N	Tapered lip seal, neoprene, 0.687" (17.4) tall	\$4.03	\$13.22	

Follow NFPA 80 requirements for fire door clearances. See Ives catalog for door coordinators.

Stocked FastTrack products will ship in 5 business days or less when ordered through FastTrack. The FastTrack ordering process does not apply to Canada. Items in Bold indicate new Zero products (available as of Q3 2025).

Specialized solutions

- These mounting brackets can be used to protect gasketing when installed with an LCN® door closer or with products supplied by other manufacturers.



328SPB

870SPB

770SPB

DOOR CLOSER MOUNTING BRACKETS			FastTrack
Part number	Description	List price each	Stocked
328SPB	Door closer mounting bracket, Steel-prime painted, 6" (152.4) long	\$48.62	▪
770SPB	Door closer mounting bracket, Steel-prime painted, 6" (152.4) long	\$60.53	▪
870SPB	Door closer mounting bracket, Steel-prime painted, 6" (152.4) long	\$57.78	▪

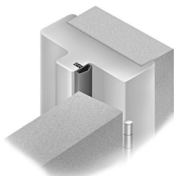
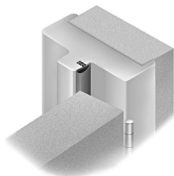
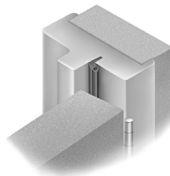
Compatible gasketing for door closer brackets

See the table below to determine which bracket model to use with a chosen gasketing model.

328SPB		770SPB		870SPB	
Height	Width	Height	Width	Height	Width
0.500" (12.7)	1.375" (34.9)	1.156" (29.3)	1.313" (33.3)	0.750" (19)	1.438" (36.5)
31, 32, 33, 50, 58FS, 98, 99, 100, 139, 312, 314, 326, 328, 475, 485, 5831, 5831FS, 5832, 5832FS, 5833, 8193, 8302, 8303, 8305, 8306, 8877, 8878, 8879		170, 770, 3709, 770FS, 770SP, 770STST, 7770		270, 272, 318, 322, 376, 470, 472, 478, 712, 870, 871, 873, 1370	

Stocked FastTrack products will ship in 5 business days or less when ordered through FastTrack. The FastTrack ordering process does not apply to Canada. Items in Bold indicate new Zero products (available as of Q3 2025).

Weatherstripping


8810

8800

8052

KERF FRAME WEATHERSTRIPPING				FastTrack
Part number	Description	Length (Ft)	List price each	Stocked
8004N	Kerf frame weatherstripping, neoprene, Black	8' (2.4 m)	\$28.00	
		17' (5.1 m)	\$59.50	
		18' (5.4 m)	\$63.00	
		19' (5.8 m)	\$66.50	
		20' (6.1 m)	\$70.00	
		21' (6.4 m)	\$73.50	
		25' (7.6 m)	\$87.50	
		500' (152.4 m)	\$1,750.00	
8043N	Kerf frame weatherstripping, neoprene, Black	8' (2.4 m)	\$31.76	
		17' (5.1 m)	\$67.49	
		18' (5.4 m)	\$71.46	
		19' (5.8 m)	\$75.43	
		20' (6.1 m)	\$79.40	
		21' (6.4 m)	\$83.37	
		25' (7.6 m)	\$99.25	
		300' (91.4 m)	\$1,191.00	
8052N	Kerf frame weatherstripping, Black Closed cell sponge neoprene rubber	8' (2.4 m)	\$27.12	
		17' (5.1 m)	\$57.63	
		18' (5.4 m)	\$61.02	
		19' (5.8 m)	\$64.41	
		20' (6.1 m)	\$67.80	
		21' (6.4 m)	\$71.19	
		25' (7.6 m)	\$84.75	
		300' (91.4 m)	\$1,017.00	
8054S-BK	Kerf frame weatherstripping, silicone, Black \varnothing 0.250" (6.4)	8' (2.4 m)	\$36.16	
		17' (5.1 m)	\$76.84	
		18' (5.4 m)	\$81.36	
		19' (5.8 m)	\$85.88	
		20' (6.1 m)	\$90.40	
		21' (6.4 m)	\$94.92	
		25' (7.6 m)	\$113.00	
		300' (91.4 m)	\$2,260.00	
8054S-WH	Kerf frame weatherstripping, silicone, White \varnothing 0.250" (6.4)	8' (2.4 m)	\$36.16	
		17' (5.1 m)	\$76.84	
		18' (5.4 m)	\$81.36	
		19' (5.8 m)	\$85.88	
		20' (6.1 m)	\$90.40	
		21' (6.4 m)	\$94.92	
		25' (7.6 m)	\$113.00	
		300' (91.4 m)	\$1,356.00	
8053Q-BR	Kerf frame weatherstripping, vinyl covered foam, Brown	9' (2.7 m)	\$3.62	
8053Q-WH	Kerf frame weatherstripping, vinyl covered foam, White	9' (2.7 m)	\$3.62	

Only the standard sizes shown above are available. Any order for a non-standard length ordered will be sold at the next longer increment.

See door manufacturer specifications for minimum required clearance between door and frame. Most models shown are available in neoprene (N) or silicone (S).

Both materials are self-extinguishing and non-staining.

Stocked FastTrack products will ship in 5 business days or less when ordered through FastTrack. The FastTrack ordering process does not apply to Canada. Items in Bold indicate new Zero products (available as of Q3 2025).



KERF FRAME WEATHERSTRIPPING				FastTrack
Part number	Description	Length (Ft)	List price each	Stocked
8056S-WH	Kerf frame weatherstripping, silicone, White ϕ 0.438" (11.1)	8' (2.4 m)	\$42.80	
		17' (5.1 m)	\$90.95	
		18' (5.4 m)	\$96.30	
		19' (5.8 m)	\$101.65	
		20' (6.1 m)	\$107.00	
		21' (6.4 m)	\$112.35	
		25' (7.6 m)	\$133.75	
		300' (91.4 m)	\$1,605.00	
8800S-BK	Kerf frame weatherstripping, silicone, Black	8' (2.4 m)	\$37.12	
		17' (5.1 m)	\$78.88	
		18' (5.4 m)	\$83.52	
		19' (5.8 m)	\$88.16	
		20' (6.1 m)	\$92.80	
		21' (6.4 m)	\$97.44	
		25' (7.6 m)	\$116.00	
		500' (152.4 m)	\$2,320.00	
8810S-BK	Kerf frame weatherstripping, silicone, Black	8' (2.4 m)	\$31.76	
		17' (5.1 m)	\$67.49	
		18' (5.4 m)	\$71.46	
		19' (5.8 m)	\$75.43	
		20' (6.1 m)	\$79.40	
		21' (6.4 m)	\$83.37	
		25' (7.6 m)	\$99.25	
		500' (152.4 m)	\$1,985.00	
8810S-WH	Kerf frame weatherstripping, silicone, White	8' (2.4 m)	\$31.76	
		17' (5.1 m)	\$67.49	
		18' (5.4 m)	\$71.46	
		19' (5.8 m)	\$75.43	
		20' (6.1 m)	\$79.40	
		21' (6.4 m)	\$83.37	
		25' (7.6 m)	\$99.25	
		500' (152.4 m)	\$1,985.00	
8812S-BK	Kerf frame weatherstripping, silicone, Black	8' (2.4 m)	\$56.24	
		9' (2.7 m)	\$63.27	
		17' (5.1 m)	\$119.51	
		18' (5.4 m)	\$126.54	
		19' (5.8 m)	\$133.57	
		20' (6.1 m)	\$140.60	
		21' (6.4 m)	\$147.63	
		25' (7.6 m)	\$175.75	
		200' (60.9 m)	\$1,406.00	
		300' (91.4 m)	\$2,109.00	
8841R	Kerf frame weatherstripping, EPDM rubber, Black	8' (2.4 m)	\$27.12	
		17' (5.1 m)	\$57.63	
		18' (5.4 m)	\$61.02	
		19' (5.8 m)	\$64.41	
		20' (6.1 m)	\$67.80	
		21' (6.4 m)	\$71.19	
		25' (7.6 m)	\$84.75	
		500' (152.4 m)	\$1,695.00	

Only the standard sizes shown above are available. Any order for a non-standard length ordered will be sold at the next longer increment. See door manufacturer specifications for minimum required clearance between door and frame. Most models shown are available in neoprene (N) or silicone (S). Both materials are self-extinguishing and non-staining.

Stocked FastTrack products will ship in 5 business days or less when ordered through FastTrack. The FastTrack ordering process does not apply to Canada. Items in Bold indicate new Zero products (available as of Q3 2025).

THRESHOLDS

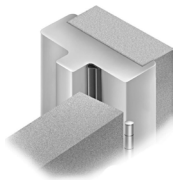
AUTOMATIC DOOR BOTTOMS

PERIMETER SEALS

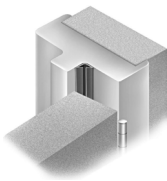
WEATHERSTRIPPING

SOLUTIONS & SPECIALTY PRODUCTS

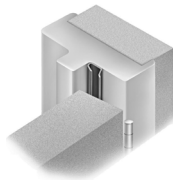
PARTS



188/488



8144



8042

SELF-ADHESIVE WEATHERSTRIPPING				
Solid neoprene & silicone seals				FastTrack
Part number	Description	Length (Ft)	List price each	Stocked
117S-BK	Self-adhesive weatherstripping, silicone, Black PSA standard	8' (2.4 m)	\$18.64	
		17' (5.1 m)	\$39.61	
		18' (5.4 m)	\$41.94	
		19' (5.8 m)	\$44.27	
		20' (6.1 m)	\$46.60	
		21' (6.4 m)	\$48.93	
		25' (7.6 m)	\$58.25	
188BIO-BR	Self-adhesive weatherstripping, Brown BioWall™ Antimicrobial rubber PSA standard	8' (2.4 m)	\$28.08	
		17' (5.1 m)	\$59.67	
		18' (5.4 m)	\$63.18	
		19' (5.8 m)	\$66.69	
		20' (6.1 m)	\$70.20	
		21' (6.4 m)	\$73.71	
		25' (7.6 m)	\$87.75	
188FS	Self-adhesive weatherstripping, silicone Intumescent rubber for fire and smoke protection PSA standard 45-minute fire rating	8' (2.4 m)	\$47.20	
		17' (5.1 m)	\$100.30	
		18' (5.4 m)	\$106.20	
		19' (5.8 m)	\$112.10	
		20' (6.1 m)	\$118.00	
		21' (6.4 m)	\$123.90	
		25' (7.6 m)	\$147.50	
188S-BK	Self-adhesive weatherstripping, silicone, Black PSA standard	8' (2.4 m)	\$22.88	▪
		17' (5.1 m)	\$48.62	▪
		18' (5.4 m)	\$51.48	▪
		19' (5.8 m)	\$54.34	▪
		20' (6.1 m)	\$57.20	▪
		21' (6.4 m)	\$60.06	▪
		25' (7.6 m)	\$71.50	▪
188S-BR	Self-adhesive weatherstripping, silicone, Brown PSA standard	8' (2.4 m)	\$22.88	
		17' (5.1 m)	\$48.62	
		18' (5.4 m)	\$51.48	
		19' (5.8 m)	\$54.34	
		20' (6.1 m)	\$57.20	
		21' (6.4 m)	\$60.06	
		25' (7.6 m)	\$71.50	
		330' (100.6 m)	\$943.80	

Only the standard sizes shown above are available. Any order for a non-standard length ordered will be sold at the next longer increment.

Stocked FastTrack products will ship in 5 business days or less when ordered through FastTrack. The FastTrack ordering process does not apply to Canada. Items in Bold indicate new Zero products (available as of Q3 2025).



SELF-ADHESIVE WEATHERSTRIPPING				
Solid neoprene & silicone seals				FastTrack
Part number	Description	Length (Ft)	List price each	Stocked
188S-CL	Self-adhesive weatherstripping, silicone, Clear PSA standard	8' (2.4 m)	\$22.88	
		17' (5.1 m)	\$48.62	
		18' (5.4 m)	\$51.48	
		19' (5.8 m)	\$54.34	
		20' (6.1 m)	\$57.20	
		21' (6.4 m)	\$60.06	
		25' (7.6 m)	\$71.50	
		330' (100.6 m)	\$943.80	
188S-GY	Self-adhesive weatherstripping, silicone, Gray PSA standard	8' (2.4 m)	\$22.88	
		17' (5.1 m)	\$48.62	
		18' (5.4 m)	\$51.48	
		19' (5.8 m)	\$54.34	
		20' (6.1 m)	\$57.20	
		21' (6.4 m)	\$60.06	
		25' (7.6 m)	\$71.50	
		330' (100.6 m)	\$943.80	
188S-WH	Self-adhesive weatherstripping, silicone, White PSA standard	8' (2.4 m)	\$22.88	
		17' (5.1 m)	\$48.62	
		18' (5.4 m)	\$51.48	
		19' (5.8 m)	\$54.34	
		20' (6.1 m)	\$57.20	
		21' (6.4 m)	\$60.06	
		25' (7.6 m)	\$71.50	
		330' (100.6 m)	\$943.80	
488BIO	Self-adhesive weatherstripping, Brown BioWall™ Antimicrobial rubber PSA standard	8' (2.4 m)	\$21.84	
		17' (5.1 m)	\$46.41	
		18' (5.4 m)	\$49.14	
		19' (5.8 m)	\$51.87	
		20' (6.1 m)	\$54.60	
		21' (6.4 m)	\$57.33	
		25' (7.6 m)	\$68.25	
		330' (100.6 m)	\$900.90	
488FS	Self-adhesive weatherstripping, silicone Intumescent rubber for fire and smoke protection, UL 10C Fire-rated PSA standard	8' (2.4 m)	\$41.52	
		17' (5.1 m)	\$88.23	▪
		18' (5.4 m)	\$93.42	
		19' (5.8 m)	\$98.61	
		20' (6.1 m)	\$103.80	
		21' (6.4 m)	\$108.99	
		25' (7.6 m)	\$129.75	
		330' (100.6 m)	\$1,712.70	
488S-BK	Self-adhesive weatherstripping, silicone, Black PSA standard	8' (2.4 m)	\$18.64	▪
		17' (5.1 m)	\$39.61	▪
		18' (5.4 m)	\$41.94	▪
		19' (5.8 m)	\$44.27	▪
		20' (6.1 m)	\$46.60	▪
		21' (6.4 m)	\$48.93	▪
		25' (7.6 m)	\$58.25	▪
		500' (152.4 m)	\$1,537.80	

Only the standard sizes shown above are available. Any order for a non-standard length ordered will be sold at the next longer increment.

Stocked FastTrack products will ship in 5 business days or less when ordered through FastTrack. The FastTrack ordering process does not apply to Canada. Items in Bold indicate new Zero products (available as of Q3 2025).



SELF-ADHESIVE WEATHERSTRIPPING				
Solid neoprene & silicone seals				FastTrack
Part number	Description	Length (Ft)	List price each	Stocked
488S-BR	Self-adhesive weatherstripping, silicone, Brown PSA standard	8' (2.4 m)	\$18.64	
		17' (5.1 m)	\$39.61	
		18' (5.4 m)	\$41.94	
		19' (5.8 m)	\$44.27	
		20' (6.1 m)	\$46.60	
		21' (6.4 m)	\$48.93	
		25' (7.6 m)	\$58.25	
		330' (100.6 m)	\$768.90	
488S-CL	Self-adhesive weatherstripping, silicone, Clear PSA standard	8' (2.4 m)	\$18.64	
		17' (5.1 m)	\$39.61	
		18' (5.4 m)	\$41.94	
		19' (5.8 m)	\$44.27	
		20' (6.1 m)	\$46.60	
		21' (6.4 m)	\$48.93	
		25' (7.6 m)	\$58.25	
		330' (100.6 m)	\$768.90	
488S-GY	Self-adhesive weatherstripping, silicone, Gray PSA standard	8' (2.4 m)	\$18.64	
		17' (5.1 m)	\$39.61	
		18' (5.4 m)	\$41.94	
		19' (5.8 m)	\$44.27	
		20' (6.1 m)	\$46.60	
		21' (6.4 m)	\$48.93	
		25' (7.6 m)	\$58.25	
		330' (100.6 m)	\$768.90	
488S-WH	Self-adhesive weatherstripping, silicone, White PSA standard	8' (2.4 m)	\$18.64	
		17' (5.1 m)	\$39.61	
		18' (5.4 m)	\$41.94	
		19' (5.8 m)	\$44.27	
		20' (6.1 m)	\$46.60	
		21' (6.4 m)	\$48.93	
		25' (7.6 m)	\$58.25	
		330' (100.6 m)	\$768.90	
8042S-BK	Self-adhesive weatherstripping, silicone, Black PSA standard	8' (2.4 m)	\$22.64	
		17' (5.1 m)	\$48.11	
		18' (5.4 m)	\$50.94	
		19' (5.8 m)	\$53.77	
		20' (6.1 m)	\$56.60	
		21' (6.4 m)	\$59.43	
		25' (7.6 m)	\$70.75	
		200' (60.9 m)	\$566.00	
8144FS-BK	Self-adhesive weatherstripping, batwing-type seal, silicone, Black Intumescent rubber for fire and smoke protection, UL 10C Fire-rated PSA standard	8' (2.4 m)	\$56.00	
		17' (5.1 m)	\$119.00	
		18' (5.4 m)	\$126.00	
		19' (5.8 m)	\$133.00	
		20' (6.1 m)	\$140.00	
		21' (6.4 m)	\$147.00	
		25' (7.6 m)	\$175.00	
		500' (152.4 m)	\$3,500.00	

Only the standard sizes shown above are available. Any order for a non-standard length ordered will be sold at the next longer increment.

Stocked FastTrack products will ship in 5 business days or less when ordered through FastTrack. The FastTrack ordering process does not apply to Canada. Items in Bold indicate new Zero products (available as of Q3 2025).

THRESHOLDS
AUTOMATIC DOOR BOTTOMS
PERIMETER SEALS
WEATHERSTRIPPING
SOLUTIONS & SPECIALTY PRODUCTS
PARTS



SELF-ADHESIVE WEATHERSTRIPPING				
Solid neoprene & silicone seals				FastTrack
Part number	Description	Length (Ft)	List price each	Stocked
8144S-BK	Self-adhesive weatherstripping, batwing-type seal, silicone, Black PSA standard	8' (2.4 m)	\$39.44	
		17' (5.1 m)	\$83.81	
		18' (5.4 m)	\$88.74	
		19' (5.8 m)	\$93.67	
		20' (6.1 m)	\$98.60	
		21' (6.4 m)	\$103.53	
		25' (7.6 m)	\$123.25	
		500' (152.4 m)	\$2,465.00	
8145S-BK	Self-adhesive weatherstripping, silicone, Black PSA standard	8' (2.4 m)	\$24.64	
		17' (5.1 m)	\$52.36	
		18' (5.4 m)	\$55.44	
		19' (5.8 m)	\$58.52	
		20' (6.1 m)	\$61.60	
		21' (6.4 m)	\$64.68	
		25' (7.6 m)	\$77.00	
		200' (60.9 m)	\$616.00	
8150S-BK	Self-adhesive weatherstripping, silicone, Black PSA standard	8' (2.4 m)	\$29.52	
		17' (5.1 m)	\$62.73	▪
		18' (5.4 m)	\$66.42	
		19' (5.8 m)	\$70.11	
		20' (6.1 m)	\$73.80	
		21' (6.4 m)	\$77.49	
		25' (7.6 m)	\$92.25	
		200' (60.9 m)	\$738.00	
8216S-BK	Self-adhesive weatherstripping Pressure seal, silicone, Black PSA standard	8' (2.4 m)	\$20.08	
		17' (5.1 m)	\$42.67	
		18' (5.4 m)	\$45.18	
		19' (5.8 m)	\$47.69	
		20' (6.1 m)	\$50.20	
		21' (6.4 m)	\$52.71	
		25' (7.6 m)	\$62.75	
		500' (152.4 m)	\$1,255.00	
9117-BK	Self-adhesive weatherstripping Fin seal, polypropylene, PSA, Black	17' (5.1 m)	\$31.98	▪
		20' (6.1 m)	\$37.62	▪
		21' (6.4 m)	\$39.50	▪
		25' (7.6 m)	\$47.03	▪
9188-BK	Self-adhesive weatherstripping Polypropylene seal, PSA, Black, 1/2" (12.7)	17' (5.1 m)	\$30.20	▪
		20' (6.1 m)	\$35.53	▪
		21' (6.4 m)	\$37.31	▪
		25' (7.6 m)	\$44.41	▪
9188-BR	Self-adhesive weatherstripping Polypropylene seal, PSA, Brown, 1/2" (12.7)	17' (5.1 m)	\$30.20	▪
		20' (6.1 m)	\$35.53	▪
		21' (6.4 m)	\$37.31	▪
		25' (7.6 m)	\$44.41	▪

Only the standard sizes shown above are available. Any order for a non-standard length ordered will be sold at the next longer increment.

Stocked FastTrack products will ship in 5 business days or less when ordered through FastTrack. The FastTrack ordering process does not apply to Canada. Items in Bold indicate new Zero products (available as of Q3 2025).

THRESHOLDS

AUTOMATIC DOOR BOTTOMS

PERIMETER SEALS

WEATHERSTRIPPING

SOLUTIONS & SPECIALTY PRODUCTS

PARTS



SELF-ADHESIVE WEATHERSTRIPPING				
Closed cell sponge neoprene seals				FastTrack
Part number	Description	Length (Ft)	List price each	Stocked
139N	Self-adhesive weatherstripping Closed cell sponge neoprene seal 1-1/4" x 1/8" (31.8 x 3.2)	8' (2.4 m)	\$46.32	
		17' (5.1 m)	\$98.43	
		18' (5.4 m)	\$104.22	
		19' (5.8 m)	\$110.01	
		20' (6.1 m)	\$115.80	
		21' (6.4 m)	\$121.59	
		25' (7.6 m)	\$144.75	
139N-PSA	Self-adhesive weatherstripping Closed cell sponge neoprene, PSA 1-1/4" x 1/8" (31.8 x 3.2)	500' (152.4 m)	\$2,895.00	
		8' (2.4 m)	\$73.92	
		17' (5.1 m)	\$157.08	
		18' (5.4 m)	\$166.32	
		19' (5.8 m)	\$175.56	
		20' (6.1 m)	\$184.80	
		21' (6.4 m)	\$194.04	
312N	Self-adhesive weatherstripping Closed cell sponge neoprene 3/16" x 1/2" (4.7 x 12.7)	25' (7.6 m)	\$231.00	
		8' (2.4 m)	\$18.96	
		17' (5.1 m)	\$40.29	
		18' (5.4 m)	\$42.66	
		19' (5.8 m)	\$45.03	
		20' (6.1 m)	\$47.40	
		21' (6.4 m)	\$49.77	
312N-PSA	Self-adhesive weatherstripping Closed cell sponge neoprene, PSA 3/16" x 1/2" (4.7 x 12.7)	500' (152.4 m)	\$1,185.00	
		8' (2.4 m)	\$22.32	
		17' (5.1 m)	\$47.43	
		18' (5.4 m)	\$50.22	
		19' (5.8 m)	\$53.01	
		20' (6.1 m)	\$55.80	
		21' (6.4 m)	\$58.59	
318N	Self-adhesive weatherstripping Closed cell sponge neoprene, Black 3/8" x 3/4" (9.5 x 19.1)	25' (7.6 m)	\$69.75	
		8' (2.4 m)	\$41.28	
		17' (5.1 m)	\$87.72	
		18' (5.4 m)	\$92.88	
		19' (5.8 m)	\$98.04	
		20' (6.1 m)	\$103.20	
		21' (6.4 m)	\$108.36	
318N-PSA	Self-adhesive weatherstripping Closed cell sponge neoprene, PSA, Black 3/8" x 3/4" (9.5 x 19.1)	500' (152.4 m)	\$2,580.00	
		8' (2.4 m)	\$71.04	
		17' (5.1 m)	\$150.96	
		18' (5.4 m)	\$159.84	
		19' (5.8 m)	\$168.72	
		20' (6.1 m)	\$177.60	
		21' (6.4 m)	\$186.48	
		25' (7.6 m)	\$222.00	

Only the standard sizes shown are available. Any order for a non-standard length ordered will be sold at the next longer increment.

Stocked FastTrack products will ship in 5 business days or less when ordered through FastTrack. The FastTrack ordering process does not apply to Canada. Items in Bold indicate new Zero products (available as of Q3 2025).



THRESHOLDS

AUTOMATIC DOOR BOTTOMS

PERIMETER SEALS

WEATHERSTRIPPING

SOLUTIONS & SPECIALTY PRODUCTS

PARTS

SELF-ADHESIVE WEATHERSTRIPPING				
Closed cell sponge neoprene seals				FastTrack
Part number	Description	Length (Ft)	List price each	Stocked
810N	Self-adhesive weatherstripping, bumper type Closed cell sponge neoprene PSA standard 5/8" x 5/8" (15.9 x 15.9)	8' (2.4 m)	\$36.96	
		17' (5.1 m)	\$78.54	
		18' (5.4 m)	\$83.16	
		19' (5.8 m)	\$87.78	
		20' (6.1 m)	\$92.40	
		21' (6.4 m)	\$97.02	
		25' (7.6 m)	\$115.50	
		300' (91.4 m)	\$1,386.00	
926N	Self-adhesive weatherstripping Closed cell sponge neoprene, PSA standard, 50 ft.(15.24 m)/roll 3/8" x 3/16" (9.5 x 4.7) One roll minimum UOM purchase.	8' (2.4 m)	\$23.92	
		17' (5.1 m)	\$50.83	
		18' (5.4 m)	\$53.82	
		19' (5.8 m)	\$56.81	
		20' (6.1 m)	\$59.80	
		21' (6.4 m)	\$62.79	
		25' (7.6 m)	\$74.75	
		500' (152.4 m)	\$1,495.00	
8172N	Self-adhesive weatherstripping Closed cell sponge neoprene, PSA standard 1/4" x 1/8" (6.4 x 3.2) Minimum order 75ft.(22.8 m), order in UOM.	8' (2.4 m)	\$14.72	
		17' (5.1 m)	\$31.28	
		18' (5.4 m)	\$33.12	
		19' (5.8 m)	\$34.96	
		20' (6.1 m)	\$36.80	
		21' (6.4 m)	\$38.64	
		25' (7.6 m)	\$46.00	
		100' (30.5 m)	\$184.00	
8770N	Self-adhesive weatherstripping Closed cell sponge neoprene, PSA standard 1/2" x 1/8" (12.7 x 3.2) Minimum order 75ft.(22.8 m), order in UOM.	8' (2.4 m)	\$32.32	
		17' (5.1 m)	\$68.68	
		18' (5.4 m)	\$72.72	
		19' (5.8 m)	\$76.76	
		20' (6.1 m)	\$80.80	
		21' (6.4 m)	\$84.84	
		25' (7.6 m)	\$101.00	
		500' (152.4 m)	\$2,020.00	
8780N	Self-adhesive weatherstripping - mullion seal Closed cell sponge neoprene, PSA 1" x 0.094" (25.4 x 2.4)	8' (2.4 m)	\$33.36	▪
		17' (5.1 m)	\$70.89	▪
		18' (5.4 m)	\$75.06	
		19' (5.8 m)	\$79.23	
		20' (6.1 m)	\$83.40	
		21' (6.4 m)	\$87.57	
		25' (7.6 m)	\$104.25	
		500' (152.4 m)	\$2,085.00	

Only the standard sizes shown are available. Any order for a non-standard length ordered will be sold at the next longer increment.

SELF-ADHESIVE WEATHERSTRIPPING			LIST PRICE		FastTrack
Pile brush seals					
Part number	Description	Per Foot	Per Meter	Stocked	
34P-BK	Pile brush, Black - for models 34, 98, 255, 871	\$7.45	\$24.44		
34P-GY	Pile brush, Gray - for models 34, 98, 255, 398, 871	\$7.45	\$24.44		
34P-BK-PSA	Self-adhesive pile brush, Black - for model 34	\$7.31	\$23.98		
34P-GY-PSA	Self-adhesive pile brush, Gray - for model 34	\$7.31	\$23.98		
137P-BK-PSA	Polypropylene pile with PSA, Black, 0.270" x 0.250" (6.8 x 6.4) - for model 137	\$4.03	\$13.22		

Stocked FastTrack products will ship in 5 business days or less when ordered through FastTrack. The FastTrack ordering process does not apply to Canada. Items in Bold indicate new Zero products (available as of Q3 2025).



SELF-ADHESIVE WEATHERSTRIPPING		LIST PRICE		FastTrack
Pile brush seals				
Part number	Description	Per Foot	Per Meter	Stocked
137P-GY-PSA	Polypropylene pile brush, PSA, Gray, 0.270" x 0.250" (6.8 x 6.4) - for model 137	\$4.03	\$13.22	
8136P-GY	Woven pile with fin, PSA, Gray, 0.188" x 0.250" (4.8 x 6.4) - for models 8136, 8137, 8138	\$3.43	\$11.25	

WEATHERSTRIPPING FOR DOORS & WINDOWS		LIST PRICE		FastTrack
Cushion-spring seals				
Part number	Description	Per Foot	Per Meter	Stocked
18B	Cushion-spring seal, Bronze, 9/16" (14.2)	\$2.89	\$9.48	
19B	Cushion-spring seal, Bronze, 3/4" (19.1)	\$3.33	\$10.93	
19WB	Cushion-spring seal, Bronze, 1-1/8" (28.6)	\$3.41	\$11.19	
118B	Cushion-spring seal with adhesive, PSA standard, Bronze, 9/16" (14.2)	\$3.60	\$11.81	
119B	Cushion-spring seal with adhesive, PSA standard, Bronze, 3/4" (19.1)	\$4.50	\$14.76	
119WB	Cushion-spring seal with adhesive, PSA standard, Bronze, 1-1/8" (28.6)	\$5.02	\$16.47	

PSA models use highest-quality foam-based, double-sided tape.

WEATHERSTRIPPING FOR DOORS & WINDOWS		LIST PRICE		FastTrack
Jamb seals for double-hung wood windows				
Part number	Description	Per Foot	Per Meter	Stocked
4B	Jamb, Bronze, 1-3/4" (44.5) top sash	\$16.61	\$54.49	
4Z	Jamb, Zinc, 1-3/4" (44.5) top sash	\$5.35	\$17.55	
5B	Jamb, Bronze, 2-1/8" (54.0) lower sash	\$18.11	\$59.42	
5Z	Jamb, Zinc, 2-1/8" (54.0) lower sash	\$5.86	\$19.23	
400B	Side jamb without return flange, Bronze, 1-3/4" (44.5)	\$18.95	\$62.17	
400Z	Side jamb without return flange, Zinc, 1-3/4" (44.5)	\$5.10	\$16.73	
500B	Side jamb without return flange, Bronze, 2-1/8" (53.1)	\$20.77	\$68.14	
500Z	Side jamb without return flange, Zinc, 2-1/8" (53.1)	\$6.68	\$21.92	
4000B	Side jamb without return flange, Bronze, 1-3/4" (44.5)	\$18.47	\$60.60	
4000Z	Zinc side jamb without return flange, 1-3/4" (44.5)	\$4.97	\$16.31	
5000B	Side jamb without return flange, Bronze	\$21.64	\$71.00	
5000Z	Zinc side jamb without return flange	\$6.91	\$22.67	

PSA models use highest-quality foam-based, double-sided tape.

PSA WEATHERSTRIPPING FOR GLASS DOORS		LIST PRICE		FastTrack
Overlapping astragal applications				
Part number	Description	Per Foot	Per Meter	Stocked
133	PVC Housing with black nylon brush, PSA standard, Clear, 1/2" (12.7)	\$14.71	\$48.26	
134	PVC Housing with neoprene seal, PSA standard, Clear, 1/2" (12.7)	\$14.71	\$48.26	

PVC SLIDING GLASS DOOR SEALING SOLUTIONS		LIST PRICE		FastTrack
Part number	Description	Per Foot	Per Meter	Stocked
135	PVC Glass door edge protection, PSA standard, Clear, 1/2" (12.7)	\$9.11	\$29.89	
136	PVC Glass door edge protection, PSA standard, Clear, 3/4" (19.1)	\$12.64	\$41.47	

Stocked FastTrack products will ship in 5 business days or less when ordered through FastTrack. The FastTrack ordering process does not apply to Canada. Items in Bold indicate new Zero products (available as of Q3 2025).

THRESHOLDS

AUTOMATIC DOOR BOTTOMS

PERIMETER SEALS

WEATHERSTRIPPING

SOLUTIONS & SPECIALTY PRODUCTS

PARTS



THRESHOLDS

POLY PILE SEALS WITH PVC & POLYCARBONATE HOUSINGS FOR SWINGING & SLIDING DOORS		LIST PRICE		FastTrack
Part number	Description	Per Foot	Per Meter	Stocked
137	PVC Housing and poly pile brush seal, PSA standard, Clear, for 1/2" (12.7) glass door	\$12.08	\$39.63	
138	PVC Housing with neoprene seal, PSA standard, Clear, for 3/4" (19.1) glass door	\$15.67	\$51.41	
8136	Polycarbonate housing with gray pile brush, PSA standard, Clear, 0.394" (10)	\$12.78	\$41.93	
8137	Polycarbonate housing with gray pile brush, PSA standard, Clear, 0.472" (12)	\$12.99	\$42.62	
8138	Polycarbonate housing with gray pile brush, PSA standard, Clear, 0.590" (15)	\$14.90	\$48.88	

AUTOMATIC DOOR BOTTOMS

EDGE PROTECTION FOR SLIDING GLASS DOORS		LIST PRICE		FastTrack
Part number	Description	Per Foot	Per Meter	Stocked
9131-PSA	PVC bumper, PSA standard, Clear, 0.750" x 0.188" (19 x 4.7)	\$7.87	\$25.82	
9137-PSA	PVC neoprene, PSA standard, Clear, for sliding glass doors	\$19.69	\$64.60	
9137S-CL	Silicone lip seal, 0.906" (23) tall	\$7.76	\$25.46	

PERIMETER SEALS

WEATHERSTRIPPING

SOLUTIONS & SPECIALTY PRODUCTS

PARTS

Stocked FastTrack products will ship in 5 business days or less when ordered through FastTrack. The FastTrack ordering process does not apply to Canada. Items in Bold indicate new Zero products (available as of Q3 2025).

Solutions and specialty products

SOUND CONTROL SYSTEMS		LIST PRICE		FastTrack
Part number	Description	Per Foot	Per Meter	Stocked
8880AA	Acoustical frame, Clear anodized	\$66.38	\$108.89	
8880D	Acoustical frame, Dark bronze anodized	\$79.70	\$130.74	
8880G	Acoustical frame, Gold anodized	\$79.70	\$130.74	


Z950

Z953

Z955

Z9500

CAM LIFT FULL MORTISE HINGES		LIST PRICE	FastTrack
Part number	Description	Each	Stocked
Z950	Cam lift full mortise hinge, Stainless steel, handed, 5" x 4.5" x 1/4" (127 x 114.3 x 6.4)	\$345.13	
Z9500	Cam lift full mortise hinge, Stainless steel, handed, 5" x 4.5" x 1/4" (127 x 114.3 x 6.4)	\$383.71	
Z953	Cam lift full mortise hinge, Stainless steel, handed, 5" x 4.5" x .180" (127 x 114.3 x 4.6)	\$224.39	
Z955	Cam lift full mortise hinge, Stainless steel, handed, 4.5" x 4.5" x .134" (114.3 x 114.3 x 3.4)	\$184.08	

Available for right or left-hand swinging doors. Cam lift hinges will not bind door closures when doors are hung within accepted industry standards. (Tested with LCN® 4041 Series original).

FLOOD BARRIER SHIELDS		LIST PRICE		FastTrack
Part number	Description	Per Foot	Per Meter	Stocked
2070A-10	Flood barrier shield, 10" (254) high	\$127.85	\$419.46	
2070A-20	Flood barrier shield, 20" (508) high	\$230.11	\$754.95	
2070A-24	Flood barrier shield, 24" (609.6) high	\$285.82	\$937.73	
2070A-30	Flood barrier shield, 30" (762) high	\$351.89	\$1,154.49	
2070A-36	Flood barrier shield, 36" (914.4) high	\$422.24	\$1,385.30	

- Each flood barrier shield is custom fabricated. Specify exact width needed and installation option required.
- Widths up to 36" (914.4) standard.
- Aluminum panel insert is supplied 7/16" (11.1) shorter than order width.

FINGER GUARDS		LIST PRICE		FastTrack
Part number	Description	Per Foot	Per Meter	Stocked
51A-180	Finger guards for doors that open to 180°, rubber, Gray, 8.5" (215.9) wide	\$25.97	\$85.20	
51A-90	Finger guards for doors that open to 90°, rubber, Gray, 6.5" (165.1) wide	\$24.28	\$79.66	
51BK-180	Finger guards for doors that open to 180°, rubber, Black anodized, 8" (203.2) wide	\$36.19	\$118.73	
51BK-90	Finger guards for doors that open to 90°, rubber, Black anodized, 6.5" (165.1) wide	\$34.00	\$111.55	
51D-180	Finger guards for doors that open to 180°, rubber, Dark bronze anodized, 8" (203.2) wide	\$36.19	\$118.73	
51D-90	Finger guards for doors that open to 90°, rubber, Dark bronze anodized, 6.5" (165.1) wide	\$34.00	\$111.55	
51G-180	Finger guards for doors that open to 180°, rubber, Gold anodized, 8" (203.2) wide	\$36.19	\$118.73	
51G-90	Finger guards for doors that open to 90°, rubber, Gold anodized, 6.5" (165.1) wide	\$34.00	\$111.55	
951A	Cover for mortise type hinges, Aluminum	\$19.78	\$64.90	
951BK	Cover for mortise type hinges, Black anodized	\$27.01	\$88.62	
951D	Cover for mortise type hinges, Dark bronze anodized	\$27.01	\$88.62	
951G	Cover for mortise type hinges, Gold anodized	\$27.01	\$88.62	

Stocked FastTrack products will ship in 5 business days or less when ordered through FastTrack. The FastTrack ordering process does not apply to Canada. Items in Bold indicate new Zero products (available as of Q3 2025).



THRESHOLDS

AUTOMATIC DOOR BOTTOMS

PERIMETER SEALS

WEATHERSTRIPPING

SOLUTIONS & SPECIALTY PRODUCTS

PARTS

BIOWALL™ ANTIBACTERIAL FINGER GUARDS		LIST PRICE		FastTrack
Part number	Description	Per Foot	Per Meter	Stocked
971AA-BIO	Biowall antibacterial rubber, Clear anodized	\$25.98	\$85.24	
971BK-BIO	Biowall antibacterial rubber, Black anodized	\$36.08	\$118.37	
971D-BIO	Biowall antibacterial rubber, Dark bronze anodized	\$36.08	\$118.37	
971G-BIO	Biowall antibacterial rubber, Gold anodized	\$36.08	\$118.37	
972AA-BIO	Biowall antibacterial rubber, Clear anodized	\$22.01	\$72.21	
972BK-BIO	Biowall antibacterial rubber, Black anodized	\$30.64	\$100.52	
972D-BIO	Biowall antibacterial rubber, Dark bronze anodized	\$30.64	\$100.52	
972G-BIO	Biowall antibacterial rubber, Gold anodized	\$30.64	\$100.52	
973AA-BIO	Biowall antibacterial rubber, Clear anodized	\$30.55	\$100.23	
973BK-BIO	Biowall antibacterial rubber, Black anodized	\$42.46	\$139.30	
973D-BIO	Biowall antibacterial rubber, Dark bronze anodized	\$42.46	\$139.30	
973G-BIO	Biowall antibacterial rubber, Gold anodized	\$42.46	\$139.30	
974AA-BIO	Biowall antibacterial rubber, Clear anodized	\$25.40	\$83.33	
974BK-BIO	Biowall antibacterial rubber, Black anodized	\$35.49	\$116.44	
974D-BIO	Biowall antibacterial rubber, Dark bronze anodized	\$35.49	\$116.44	
974G-BIO	Biowall antibacterial rubber, Gold anodized	\$35.49	\$116.44	

Stocked FastTrack products will ship in 5 business days or less when ordered through FastTrack. The FastTrack ordering process does not apply to Canada. Items in Bold indicate new Zero products (available as of Q3 2025).

PARTS

EXPANSION SHIELD / ANCHORS					FastTrack
Model	Description	Pkg qty	Part No.	List price	Stocked
#221	Plastic shield with #10 x 1-1/4" (or 1-1/2", 1-3/4") flat Phillips® SMS	4	47257389	\$4.44/pack	
		4	47257389-04	\$15.49/pack	
		4	47257389-480	\$4.42/pack	
#222	Lead shield with #10 x 1-1/4" (or 1-1/2", 1-3/4") flat Phillips SMS	4	47257390	\$4.50/pack	
		4	47257390-04	\$12.35/pack	
		4	47257390-480	\$4.50/pack	
#223	MSLA-10 Anchor with #10-24 x 1-1/2" flat Phillips machine screw	4	47257391	\$10.48/pack	▪
		4	47257391-04	\$20.96/pack	
		4	47257391-480	\$10.48/pack	
#224	MSLA-4 Anchor with #1/4-20 x 1-1/2" flat Phillips machine screw	4	47257392	\$10.48/pack	
		4	47257392-04	\$20.96/pack	
		4	47257392-480	\$10.48/pack	
#226	Stainless steel sleeve anchor	4	47257393	\$31.85/pack	
		4	47257393-04	\$63.70/pack	
		4	47257393-480	\$31.85/pack	

Stocked FastTrack products will ship in 5 business days or less when ordered through FastTrack. The FastTrack ordering process does not apply to Canada.

NAILS			
Model	Description	Part No.	List price
16	Zinc-plated flathead steel nail, 7/8" (22.2 mm)	47264927	\$55.74/lb.

1 lb. contains ~1300 pcs. Minimum order 1 lb.

ANCHOR QUANTITIES BY THRESHOLD LENGTH						
Model	≤41"	>41" and ≤85"	>85" and ≤126"	>126" and ≤170"	>170" and ≤210"	>210"
525, 526, 624, 625, 626, 8726, 7336, 7337, 7338	8	16	24	32	40	48
8729	12	20	28	36	44	52
All others	4	8	12	16	20	24

Security screws

- Torx® screws for D, BK, G finished products are available upon request, call for price.
- Security screws for A/AA/SP/STST finish products in chart below.

SECURITY SCREWS					
Category	Model	Contents	Finish	Part No.	List price
HNJ & FG	11, 31, 32, 33, 39, 44, 47, 50, 52, 53, 55, 72, 95, 96, 98, 99, 100, 110, 111, 139, 140, 141, 142, 153, 154, 155, 254, 255, 270, 272, 312, 314, 318, 322, 326, 328, 329, 339, 376, 381, 429, 452, 470, 472, 475, 477, 478, 485, 539, 555, 570, 712, 870, 871, 873, 905, 1370, 3709, 8049, 8149, 8151, 8191, 8192, 8193, 8194, 8195, 8197, 8198, 8302, 8303, 8305, 8877, 8878, 8879, 111FS, 302FS, 328FS, 339FS, 339W, 39W, 50M, 555FS, 55FS, 639W, 973BIO, 511, 51, 951, 972BIO	(12) #6 x 1" Button security Torx SMS, clear ZP	A or AA	47259852	\$25.20
ADJ	170, 770, 770FS, 7770	(19) #8 x 1-1/2" Flat security Torx SMS, clear ZP	AA, SP, or STST	47259939	\$30.23
Stiles	383, 383FS	(10) #8 x 3/4" Flat security Torx SMS, clear ZP	AA	47259975	\$16.80
ADB	352, 362, 366, 368	(11) #8 x 1-1/2" Flat security Torx SMS, clear ZP	AA	47259741	\$16.80
ADB	321, 351, 361, 365, 367	(11) #8 x 1-1/2" Button security Torx SMS, clear ZP	AA	47259744	\$58.77
Thresholds	164	#10 x 1-1/2" Flat Torx SMS, stainless steel	STST	48046761	\$27.07

THRESHOLDS
AUTOMATIC DOOR BOTTOMS
PERIMETER SEALS
WEATHERSTRIPPING
SOLUTIONS & SPECIALTY PRODUCTS
PARTS



PARTS

END CAP SETS					
Model	Contents	Finish	Part No.	List price	
Z49: 360, 364, 369	(2) End caps (8) Screws	USP	47252145	\$20.88	
321A	(4) End caps (2) Screws for both handings	A	47253671	\$9.17	
321	(4) End caps (2) Screws for both handings	G, D, BK	47253671-695	\$9.17	
320, 323	(2) End caps (4) Screws	AA	47251270	\$9.17	
350, 360, 364, 369	(2) End caps (4) Screws	AA	47251371	\$9.17	
351, 352	(2) End caps (4) Screws	AA	47251332	\$9.17	
351, 352	(2) End caps (4) Screws	D, BK	47251332-695	\$9.17	
361, 362, 365, 366, 367, 368	(2) End caps (4) Screws	AA	47251383	\$9.17	
361, 362, 365, 366, 367, 368	(2) End caps (4) Screws	D, BK	47251383-695	\$9.17	
141 Rain drip: 362, 366, 368	(2) End caps (4) Screws	All finishes	47253705	\$9.55	
477	(2) End caps (4) Screws	A, AA	47255366	\$8.83	

AUTOMATIC DOOR BOTTOM ACCESSORIES		
Description	Part No.	List price
Brass actuator nut, 50 mm (1.96")	47255867	\$5.02
Locking key for automatic door bottoms	8361KEY	\$5.79

SCREW PACKS					
Automatic door bottoms					
Model	Contents	Finish	Part No.	List price	
320, 323, 350, 355, 360, 364, 369, 3551, 3552	(22) Screws #6 x 3/4" PPHSDS	AA	47253854	\$6.72	
321, 351, 361, 365, 367 - up to 108" (2.7 m)	(11) Screws #8 x 1-1/2" Truss PHSMS, ZP	AA	47253868-00	\$6.72	
321, 351, 361, 365, 367 - up to 108" (2.7 m)	(11) Screws #8 x 1-1/2" Truss PHSMS, Gold ZP	G	47253868-34	\$50.39	
321, 351, 361, 365, 367 - up to 108" (2.7 m)	(11) Screws #8 x 1-1/2" Truss PHSMS, Black ZP	D, BK	47253868-695	\$6.72	
352, 362, 366, 368	(4) #8 x 1-1/2" Flat Torx SMS, ZP	AA	47257743	\$6.72	
352, 362, 366, 368	(11) Screws #8 x 1-1/2" FPHSMS	AA	47253866-00	\$6.72	
352, 362, 366, 368 - up to 108" (2.7 m)	(11) Screws #8 x 1-1/2" FPHSMS, Gold ZP	G	47253866-34	\$50.39	
352, 362, 366, 368 - up to 108" (2.7 m)	(11) Screws #8 x 1-1/2" FPHSMS, Black ZP	D, BK	47253866-695	\$6.72	

SCREW PACKS					
Head & jamb					
Model	Contents	Finish	Part No.	List price	
170, 770, 7770, 770SP, 770STST	(19) Screws #8 x 1-1/2" FPHSMS, ZP	AA	47254760	\$6.72	
170D, 770D, 7770D	(19) Screws #8 x 1-1/2" FPHSMS, Black ZP	D, BK	47254761	\$8.41	
170G, 770G, 7770G	(19) Screws #8 x 1-1/2" FPHSMS, Brass plate	G	47254762	\$109.16	
11, 31, 32, 33, 39, 39W, 44STST, 47, 50, 50MA, 52, 53, 55, 55FS, 72, 95, 96, 98, 99, 100, 110, 111, 111FS, 139, 140, 140FS, 141, 142, 153, 154, 155, 253, 253FS, 254, 255, 270, 272, 302FS, 312, 314, 314PVC, 318, 322, 326, 326PVC, 328, 328PVC (AA or A finish screw), 328FS, 329, 329PVC, 339, 339W, 339FS, 339PVC (AA or A finish screw), 376, 376D (AA finish screw), 381, 452, 470, 472, 475, 475D (AA finish screw), 475G (AA finish screw), 478, 478D (AA finish screw), 477, 477D (AA finish screw), 477G (AA finish screw), 485, 511, 539, 555, 555FS, 570, 639WA, 712, 870, 871, 873, 905, 1370, 3544, 3546, 3709, 8049R, 8149, 8151, 8191, 8192, 8193, 8194, 8195, 8197, 8198, 8302, 8303, 8305, 8877, 8878, 8879	(6) Screws #6 x 1 PPHSDS	AA, A	47254768	\$6.99	



PARTS

SCREW PACKS				
Head & jamb				
Model	Contents	Finish	Part No.	List price
11, 31, 32, 33, 142, 302FS, 314, 326, 328, 329, 339, 339FS, 339W, 485, 8197, 8198	(6) Screws #6 x 1" PPHSDS, Black ZP	D, BK	47254769	\$13.97
314, 302FS, 326, 328, 485, 31, 32, 33, 339, 339W, 328, 329, 8197, 339FS, 8198, 11, 142	(6) Screws #6 x 1" PPHSDS, Brass plate	G, B	47254770	\$6.99
41, 1840	(10) Screws #6 x 3/4" FPHSMS (10) Screws #6 x 3/4" FPHSMS, Dark bronze (10) Screws #6 x 3/4", Gold	AA, D, BK, G	47254801	\$33.61
429	(6) Screws #10 x 3/4" PPHSDMS	A	47254804	\$4.97
43SP, 43STST	(11) 1/4-20 x 1" PPHMS (11) 1/4-20 Sex bolts, 1" long (4) #10 x 3/4" PPHSDS	All finishes	47254805	\$47.01
521FS	(6) Flanged #10 C-Sink washer	All finishes	47254806	\$6.72
383, 383FS	(10) #8 x 3/4" FPHSMS (10) #8 x 3/4" FPHSMS Black ZP	AA, D	47254807	\$6.72
51A-90, 51A-120, 51A-180, 951,971AA-BIO, 972AA-BIO, 974AA-BIO, 973AA-BIO	(10) #6 x 3/4" PPHSMS	A or AA	47254808	\$6.72
56, 156, 557	(20) 8-32 x 5/8" OPHMS steel, ZP	All finishes	47257629	\$33.61
55, 55FS, 155, 255, 555, 555FS, 712	(20) Screws 8-32 x 1/2" OPHMS steel, ZP	All finishes	48584228	\$18.20
55, 55FS, 155, 255, 555, 555FS, 712	(30) Screws 8-32 x 1/2" OPHMS steel, ZP	All finishes	48584229	\$23.30
55, 55FS, 155, 255, 555, 555FS, 712	(50) Screws 8-32 x 1/2" OPHMS steel, ZP	All finishes	48584230	\$34.40
55, 55FS, 155, 255, 555, 555FS, 712	(100) Screws 8-32 x 1/2" OPHMS steel, ZP	All finishes	48584231	\$62.00

SCREW PACKS				
Thresholds				
Model	Contents	Finish	Part No.	List price
All "A" or "AA" finish thresholds (and 93A)	(4) Screws #10 x 1-1/2" FPHSMS	A, AA	47254099	\$6.72
All "D" or "BK" finish thresholds	(4) Screws #10 x 1-1/2" FPHSMS, Black ZP	D, BK	47254100	\$6.72
All "B" or "G" finish thresholds	(4) Screws #10 x 1-3/4" FPHWS, Brass	B, G	47254101	\$18.48
All "-ORB" finish thresholds	(4) Screws #10 x 1-3/4" FPHWS, Brass, Oil Rubbed	B-ORB	47254101-10B	\$26.86
All "STST" finish thresholds	(4) Screws #10 x 1-1/4" FPHSMS, stainless steel	STST	47254102	\$6.72
Any brass threshold	(4) #10 x 1-1/2" FPHWS, Brass	B	47257628	\$10.92

SCREW PACKS					
Other					
Category	Model	Contents	Finish	Part No.	List price
Flood barrier	2070A	(10) 7/6" Locking plug, 16 - thumb screw assemblies (10) #10 x 1-1/2" FPHSMS (10) Plastic anchors	A	47255200	\$100.76
Strike plate	328SPB, 770SPB, 870SPB	(3) #12 x 1-1/4" FPHSMS, stainless steel	STST	47255358	\$6.72
Weather-stripping	4B,4Z, 5B, 5Z, 18B, 19B, 19WB, 23B, 400B, 400Z, 500B, 500Z, 4000B, 4000Z, 5000B, 5000Z	(10) Nails #16 x 7/8" (10) 5/16" Waferhead drive screws	All finishes	47253928	\$6.72
Hinge	Z955	(8) Screws #12 x 1-1/4" FPHSMS, stainless steel (8) Screws 12-24 x 3/4" UFPHMS, stainless steel	STST	47253873	\$27.67
Hinge	Z950, Z953	(8) Screws #12 x 3/4" FPHSMS, stainless steel (8) Screws 12-24 x 3/4" UFPHMS, stainless steel	STST	47253874	\$10.61
Hinge	Z9500	(8) Screws 5/16-18 x 3/4" FPHMS, stainless steel	STST	47253876	\$8.41

THRESHOLDS

AUTOMATIC DOOR BOTTOMS

PERIMETER SEALS

WEATHERSTRIPPING

SOLUTIONS & SPECIALTY PRODUCTS

PARTS

PARTS

MISCELLANEOUS		
Part No.	Description	List price
137TAPE	Dual sided closed cell foam tape, white, 3/8" (9.5 mm) wide x 1/32" x 216' (65.8 m) roll	\$38.87
138TAPE	Dual sided closed cell foam tape, white, 5/8" (15.9 mm) wide x 1/32" x 216' (65.8 m) roll	\$56.07
9495TAPE	3M Double-coated clear tape, 1/4" (6.4 mm) wide x 180' (54.9 m) roll, minimum order and UOM	\$49.14

REPLACEMENT RUBBER		LIST PRICE	
Part No.	Description	Per Foot	Per Meter
59N	Lip seal for mortise aluminum track	\$4.04	\$13.25
363N	Sponge, neoprene, 0.656" (16.7 mm) wide	\$8.48	\$27.82
365N	Bulb seal, neoprene, 0.735" (18.7 mm) wide	\$9.38	\$30.77
367N	Double wrap ADB seal, neoprene	\$7.37	\$24.18
486N	Dual lip, 0.36" (9.1 mm) wide, and bulb, 0.176" (4.5 mm) wide, base - neoprene	\$5.87	\$19.26
521S-BK	Rectangular seal, silicone, 1.938" (49.2 mm) tall	\$9.92	\$32.55
539N	Sweep seal, neoprene, 1.56" (39.6 mm) tall	\$4.04	\$13.25
572N	Lip and bulb seal, neoprene, 0.36" (9.1 mm) wide	\$7.03	\$23.06
2070N	Closed cell sponge, neoprene - U-shape extrusion, 1/4" x 5/8" (6.4 mm x 15.9 mm)	\$6.11	\$20.05
3150N	Self-extinguishing T-shape EPDM rubber - extrusion, 0.27" x 0.071" (6.9 mm x 1.8 mm)	\$3.70	\$12.14
3365N	Bottom seal, 5/8" (15.9 mm) wide	\$9.29	\$30.48
8197N	Tapered lip seal, EPDM, 1.063" (27 mm)	\$6.92	\$22.70
8353N	Open bulb seal, neoprene, 0.469" (11.9 mm) wide	\$5.91	\$19.39
8557S-BK	Silicone double lip seal with compressive bulb	\$6.59	\$21.62



Custom bulkhead template

Company Name: _____

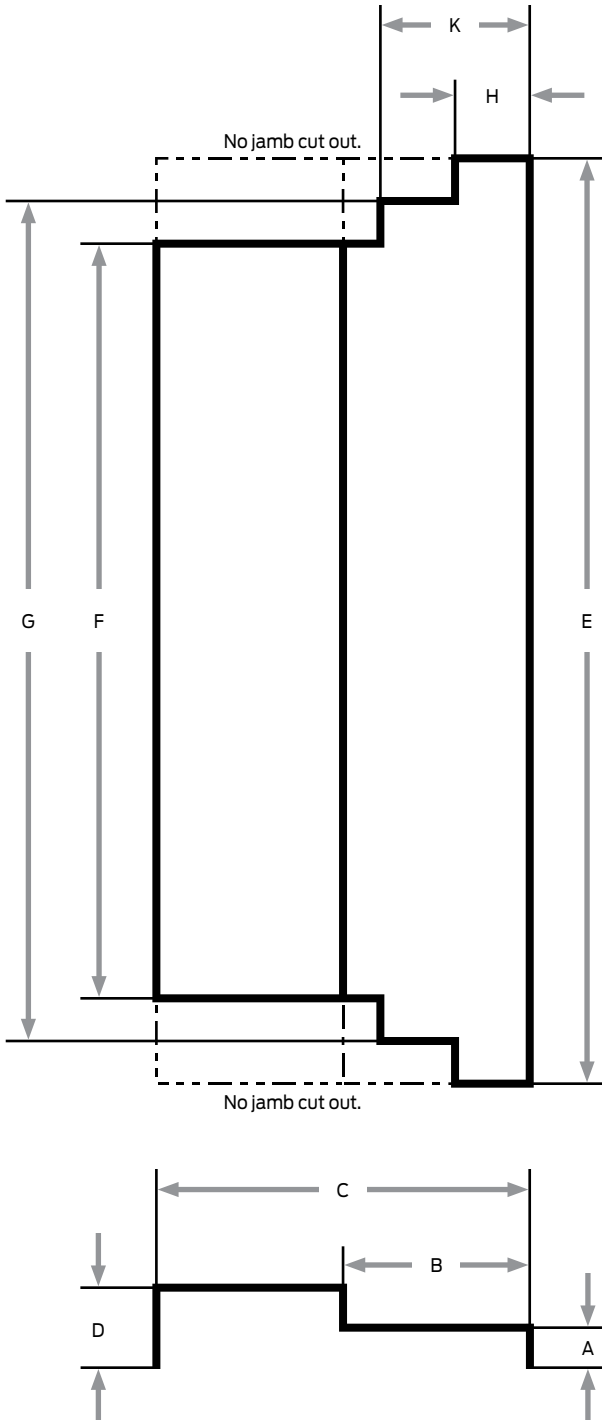
Contact: _____

Phone: _____

Email: _____

Purchase Order #: _____

USA Email to: Support@allegion.com or Fax to: (800) 851-0000
 CAN Email to: Canada.TechServices@allegion.com



Please complete Qty.

Product	Desc.	Qty.
669A	Aluminum	
669S	Steel	
669STST	Stainless	

Please complete dimensions in inches or mm.
 Must complete A-E. F-K optional if required.

	Dimension	Inches "	MM
Rectangular - No jamb cut outs	A (minimum dimension 1")		
	B		
	C		
	D (can only be 1" greater than A)		
	E		
Jamb cut outs	F		
	G		
	H		
	K		

About Allegion

At Allegion (NYSE: ALLE), we design and manufacture innovative security and access solutions that help keep people safe where they live, learn, work and connect. We're pioneering safety with our strong legacy of brands like CISA®, Interflex®, LCN®, Schlage®, SimonsVoss® and Von Duprin®. Our comprehensive portfolio of hardware, software and electronic solutions is sold around the world and spans residential and commercial locks, door closer and exit devices, steel doors and frames, access control and workforce productivity systems.

For more, visit www.allegion.com

KRYPTONITE ■ LCN ■  ■ STEELCRAFT ■ VON DUPRIN