



921059-00

Trim

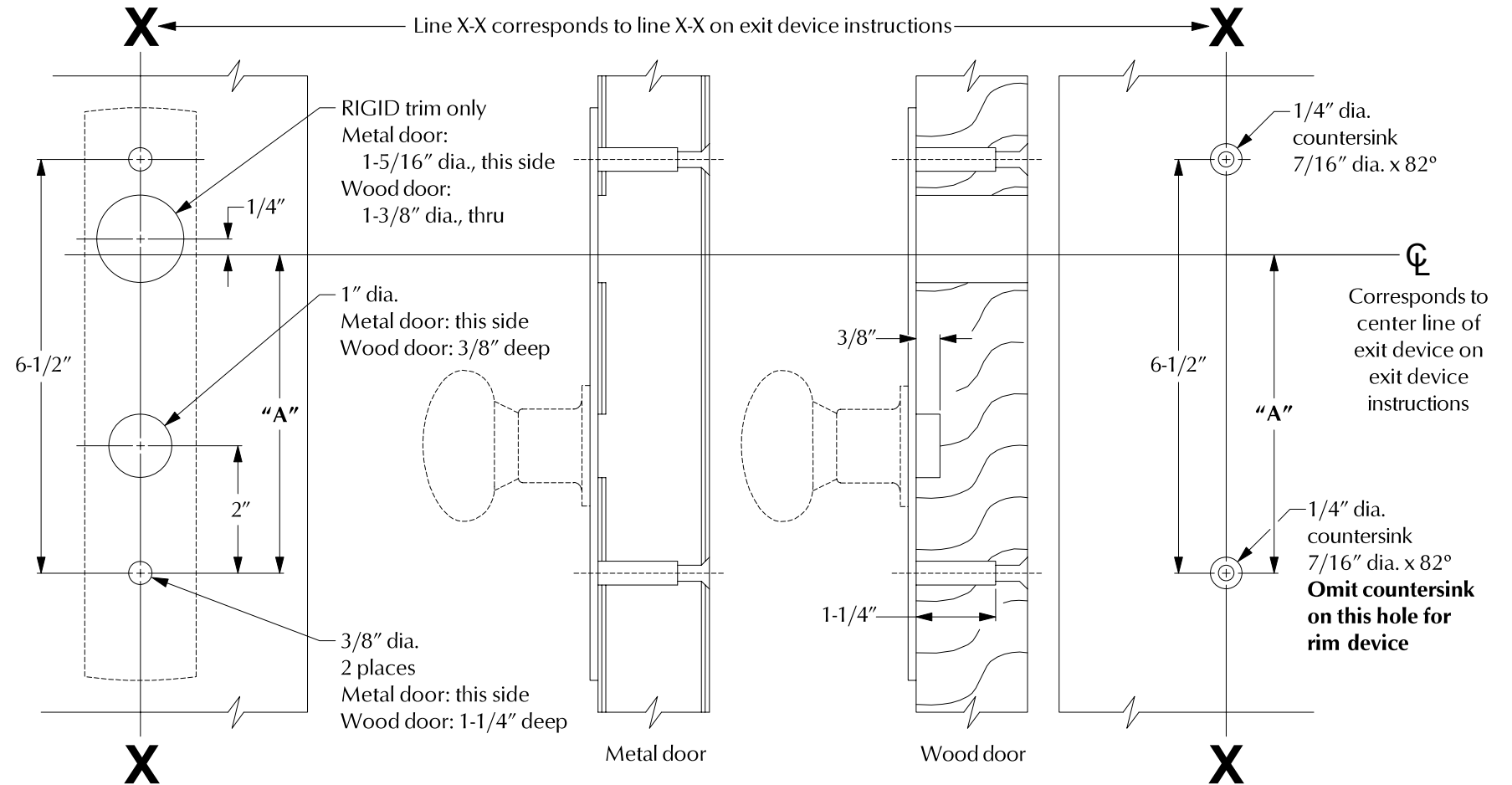
606K-DT/K-Rigid

VON DUPRIN®

Installation Instructions

1. Prepare door for exit device. See exit device instructions for holes, line X-X, and center lines.
2. Prepare door for trim:
 - A. Transfer line X-X from inside (exit device side) of door to outside (trim side) of door. Use extra care if edge of door is beveled. Be sure line X-X is parallel to edge of door.
 - B. Locate and prepare holes as shown.
3. For RIGID trim, install rim cylinder.
4. Apply trim.
5. For RIGID trim, cut cylinder tailpiece to extend 1/2" to 3/4" out of exit device side of door.
6. Apply exit device.

Device Application Schedule		
Trim	Device	Dimension "A"
606K-RIGID	88 Rim	5"
606K-DT	44 Rim	5"
	88 Rim	
	8827 Vertical Rod with 88 Rim	
606K-DT	44 Mortise Lock	3-1/4"
	8875 Mortise Lock	
	8827 Vertical Rod	



For cutouts on inside face of door, see exit device instructions

Customer Service
1-877-671-7011 www.allegion.com/us



© Allegion 2014
Printed in U.S.A.
921059-00 Rev. 01/14-b