



931205-00

4690

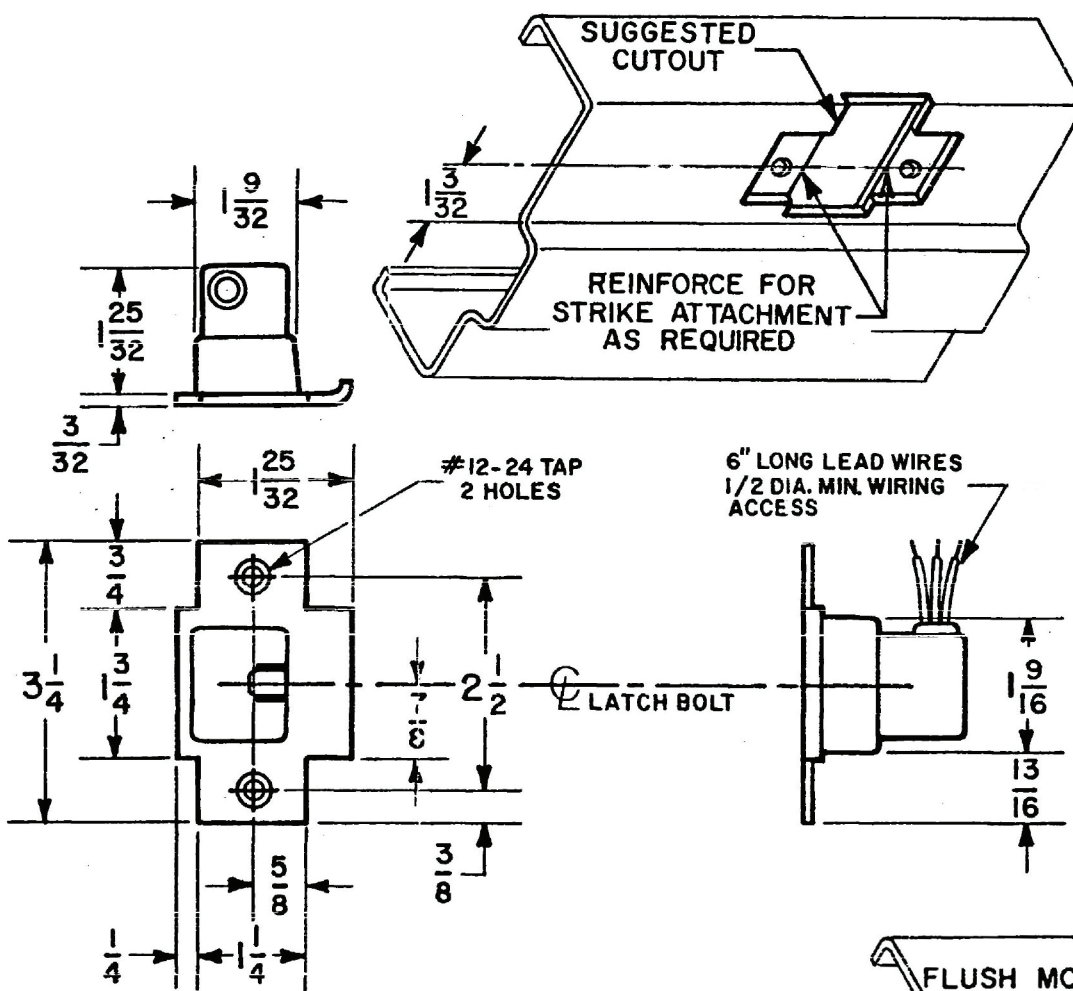
VON DUPRIN®

Monitor Strike

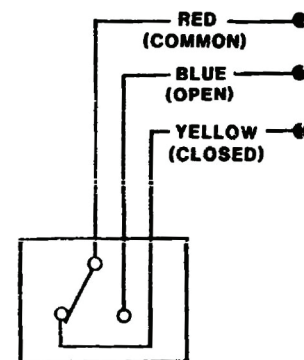
Installation Instructions

Note: For device preparation see directions that accompany them.

- 1 Prepare frame for monitor strike as shown.
- 2 Wiring and installation of strike
 - a. Connect wires from strike to lead. (See wiring diagram)
 - b. Secure strike to frame using the (2) #12-24 screws in the mounting hardware package.
- 3 Check operation of monitor strike.

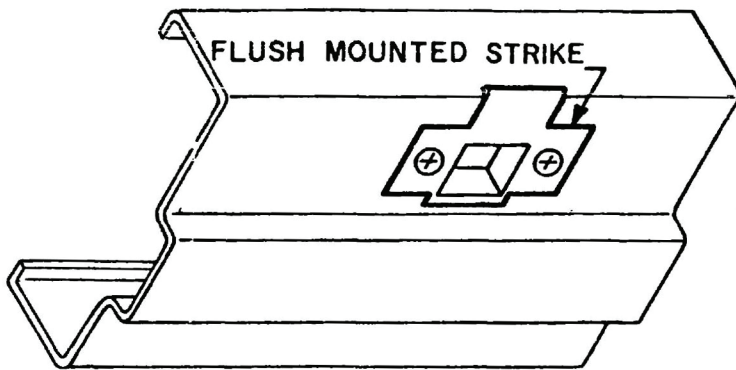


WIRING DIAGRAM



MONITOR STRIKE

NOTE: SWITCH POSITION SHOWN WITH TRIPPER DEPRESSED, IE: LATCH BOLT IN STRIKE.



DEVICE APPLICATION SCHEDULE		
APPLICATION	MIN. BACKSET	MIN. STILE
33/3547	1-5/8"	2-3/8"
33/3547A	1-5/8"	2-9/16"
33/3547-F & 33/3547A-F	2-3/4"	3-1/2"
98/9947	2-3/16"	3-5/8"
98/9947-F	2-3/4"	4-1/8"

Customer Service
 1-877-671-7011 www.allegion.com/us



© Allegion 2014
Printed in U.S.A.
931205-00 Rev. 04/14-b