



47347712

379L, 379L-BE, E379L-BE

VON DUPRIN®

Lever Control for 55 Rim Device on Metal or Wood Door

Installation Instructions

INSTALLATION INSTRUCTIONS

1. Prepare door for exit device. See exit device instructions for locations of holes, backset (line X-X), and center lines.
2. Prepare door for lever control:
 - a. Transfer line X-X from inside (exit device side) of door to outside (control side) of door. Use extra care if edge of door is beveled. Be sure line X-X is parallel to edge of door.
- ① **Note: See back side of sheet for hole preparation for metal or wood.**
 - b. Locate and prepare holes as indicated.
3. Install cylinder into lever control if required (Figures 1 & 2). Ensure cylinder cam is set for required function and replace if necessary.
4. Exit device must be NL function, which has input cams for 379L spindle. If device input cams are needed, order #050105.
5. Attach 379L bottom hex stud to door with 12-24 x 5/8" OPHMS.
6. While aligning 379L spindle with lower input cam on device center case, insert upper device center case mounting screw (12-24 x 1-1/2" OPHMS) through center case and into top hex stud of 379L.
7. Attach lower device center case mounting screw (#12 x 1-1/2" OPHMS or OPHWS) through device into surface of the door only (screw does not align with bottom hex stud of 379L.)
8. Test key, lever control, and device action.

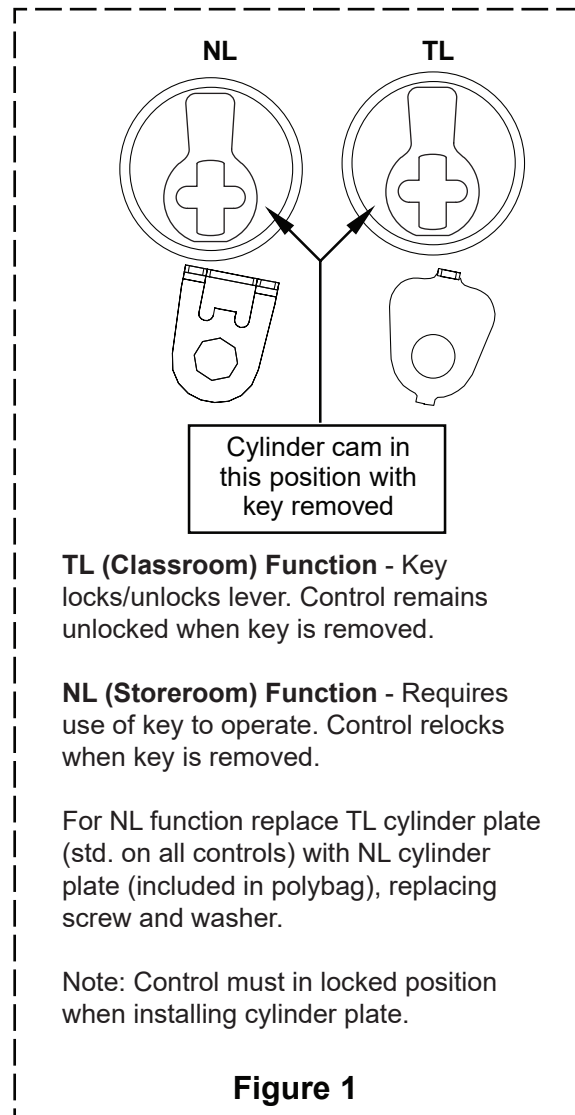


Figure 1

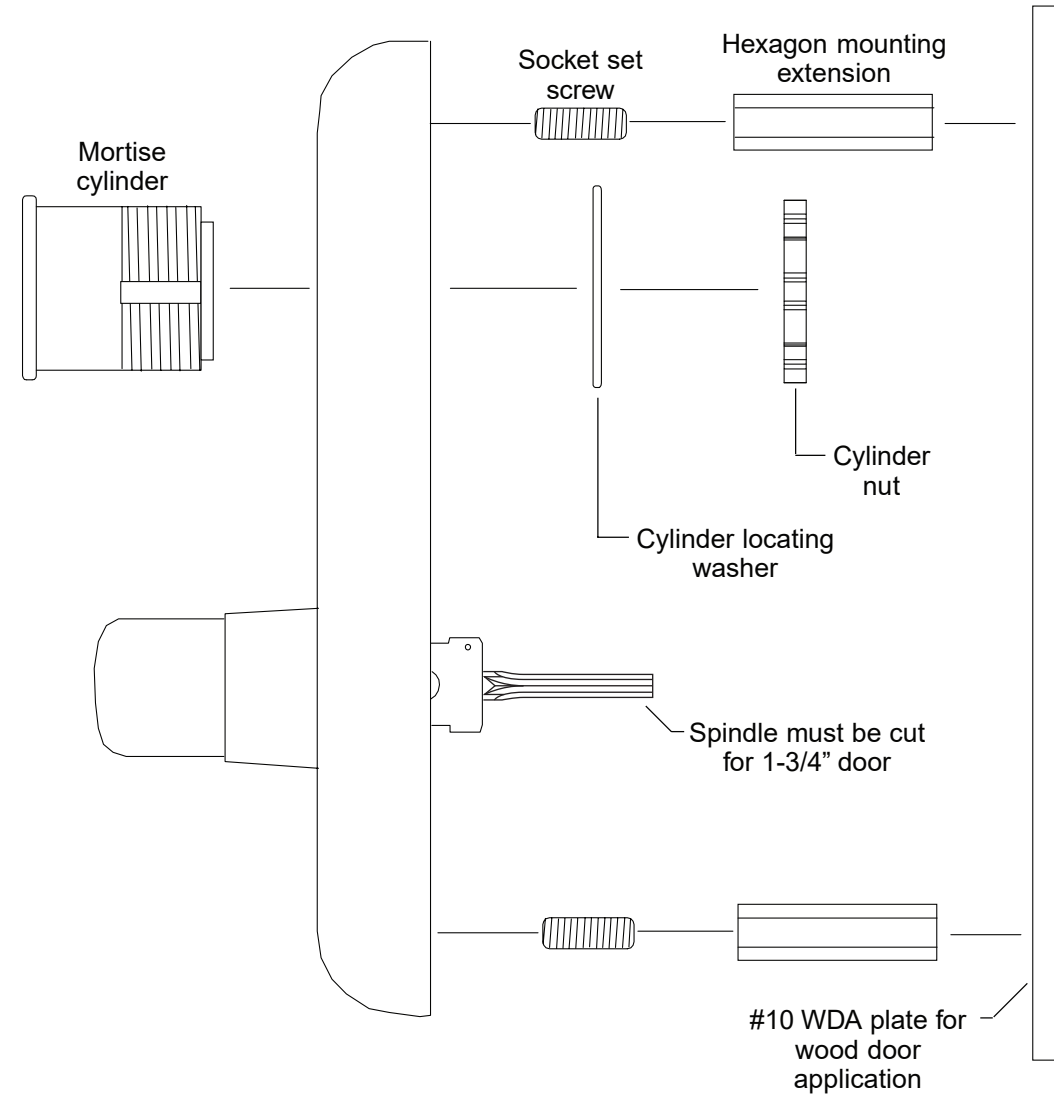
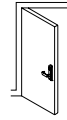
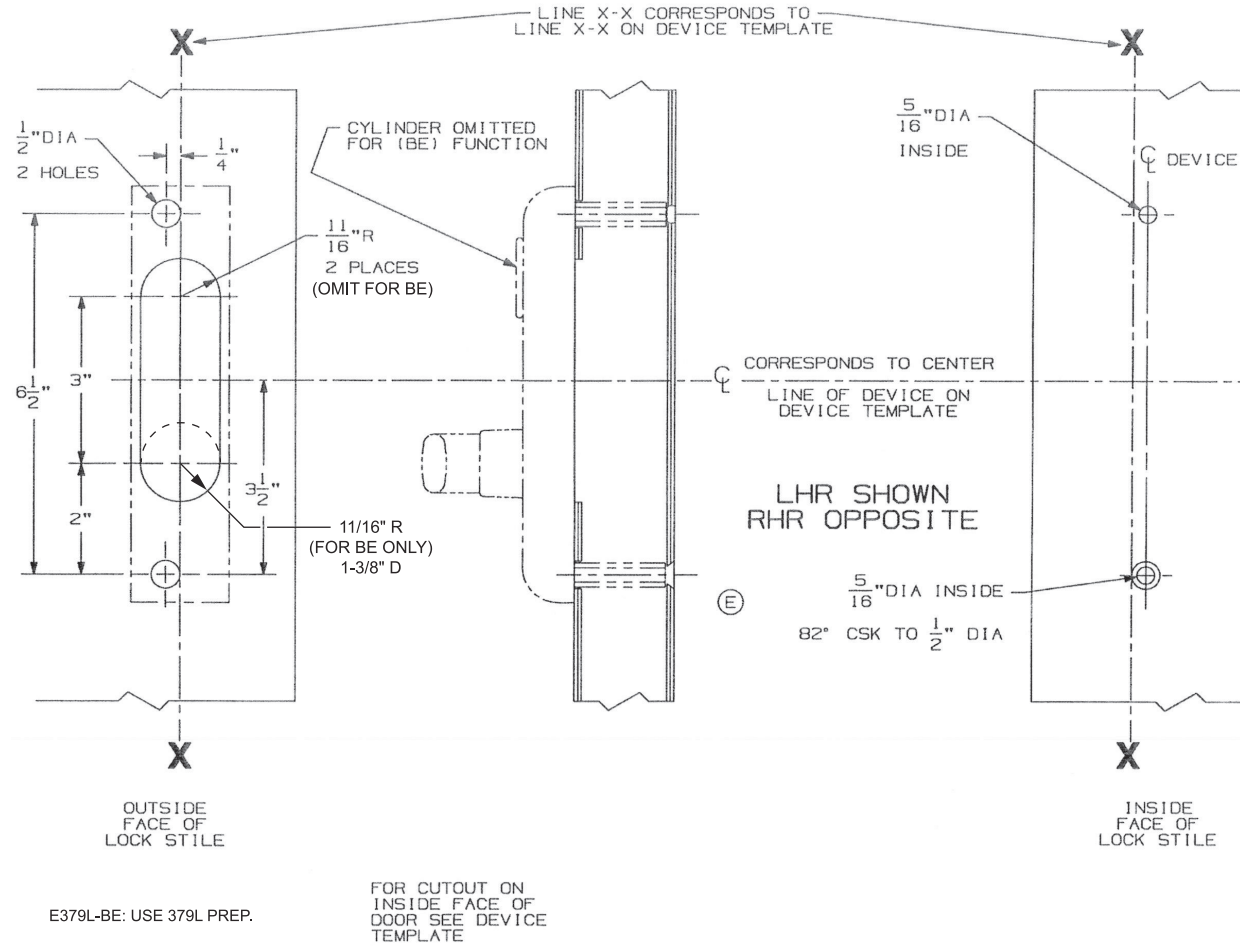


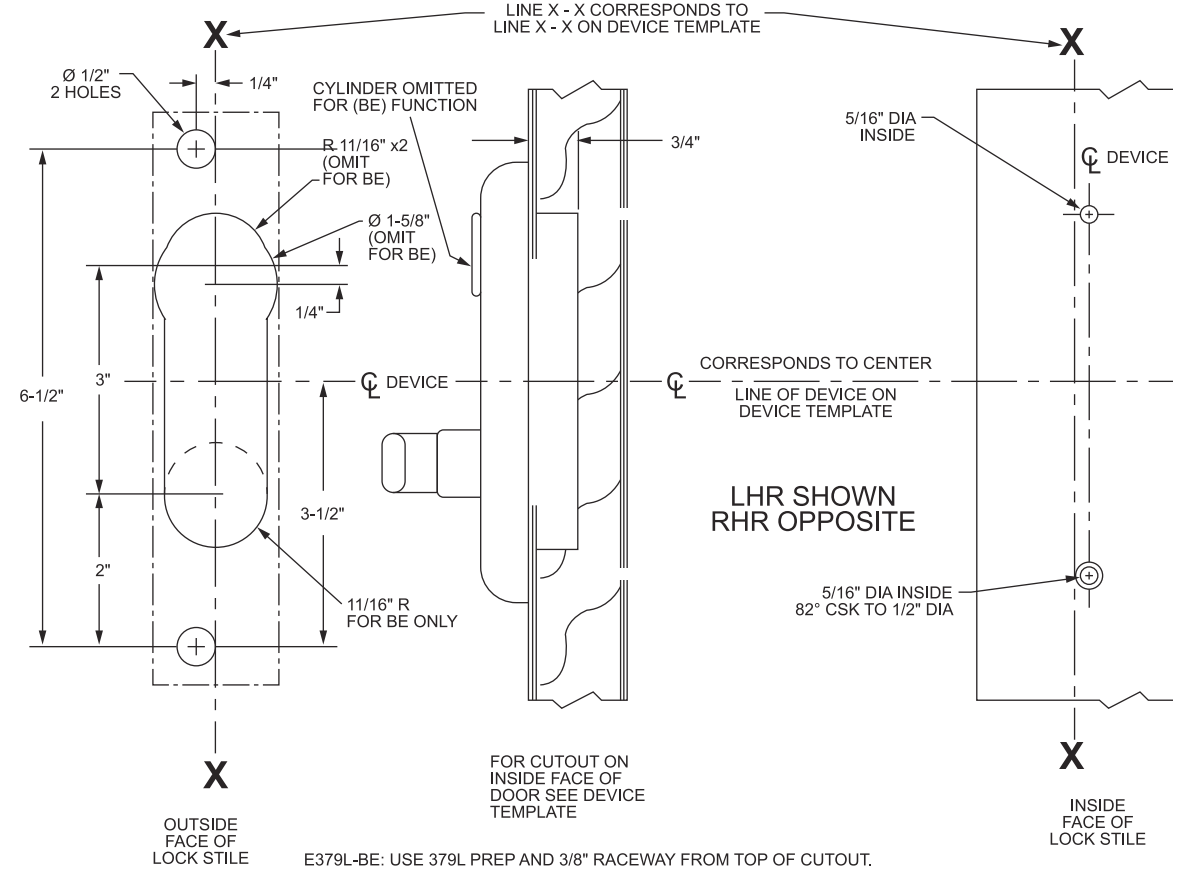
Figure 2



LHR shown
RHR opposite



Metal Door Application



Wood Door Application

Customer Service

1-877-671-7011 www.allegion.com/us



© Allegion 2020
Printed in U.S.A.
47347712 Rev. 11/20-a