



D-Series Electrified Locks



P513-541

D80PDEL, D80PDEU

Installation Instructions

All installations should be in accordance with local electrical codes and National Electrical Code NFPA70

Electrified locks are available with one of two modes, EL or EU.

EL, electrically locked (fail safe): Auxiliary latch deadlocks latchbolt when door is closed. Outside knob/lever is continuously locked electrically until unlocked by key, switch or power failure. Inside knob/lever is always free for immediate exit.

EU, electrically unlocked (fail secure): Auxiliary latch deadlocks latchbolt when door is closed. Outside knob/lever is continuously locked until unlocked by key or electrical current. Inside knob/lever is always free for immediate exit.

Electrical requirements:

- Amps: 0.15, 24 VAC
- Amps: 0.35, 24 VDC
- Operating temperature: maximum +151°F, minimum -31°F (66°C to -35°C)

Typical installation:

- All power requirements shown are for single lock operation. For multi-lock installations, powered by a single supply, current values must be increased accordingly.
- Provision must be made to route low voltage wires to the lock. Attach wires to 6" pigtail of rectifier (for AC operation) or solenoid (for DC operation).
- Power transfer unit and low voltage wiring are not furnished.
- Select proper wire size to minimize voltage drop. Voltage requirements indicated must be maintained at lock for dependable operation.

Replacement Kits:

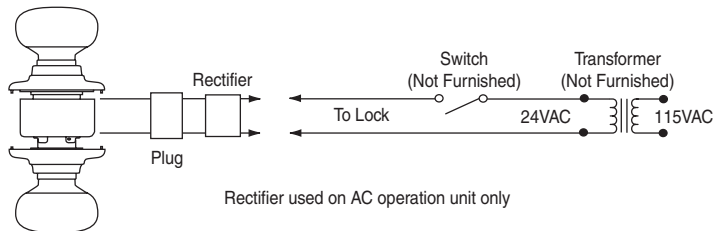
38-064 – Solenoid and Rectifier, EL (AC and DC)

38-065 – Solenoid and Rectifier, EU (AC and DC)

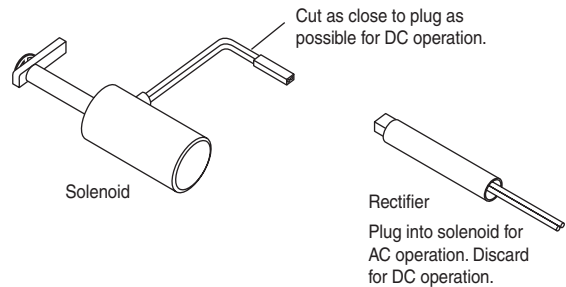
① **Note: Spacer furnished with replacement kits to be placed between solenoid and knob catch on knob designs only.**

D-Series electrified locks typical wiring diagrams:

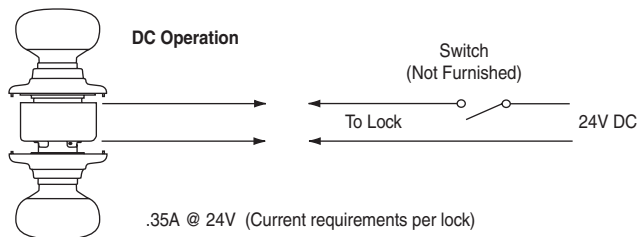
AC Power Source – EL or EU



AC and DC Application



DC Power Source – EL or EU



Customer Service

1-877-671-7011 www.allegion.com/us



© Allegion 2016
Printed in U.S.A.
P513-541 Rev. 07/16-g