



ALLEGION™

**LCN**®

# Touchless access solutions

**Automatic operators, touchless  
actuators and wireless transmitters**



## Service and support

As solutions are reimagined to meet the new challenges of today's environment, put our experience to work for you. Beginning long before your first project, we seek to understand your needs and exceed your expectations. Contact an Allegion expert via our [online form](#).



**20+ local offices**  
with expert  
consultants to  
support you



**16 field technical  
support representatives**  
available onsite to  
troubleshoot product  
application and  
installation issues and  
provide training



**Our team of technical  
support experts**  
based in the U.S.  
average more than 15  
years of experience and  
are available to take  
your call at 877-671-7011

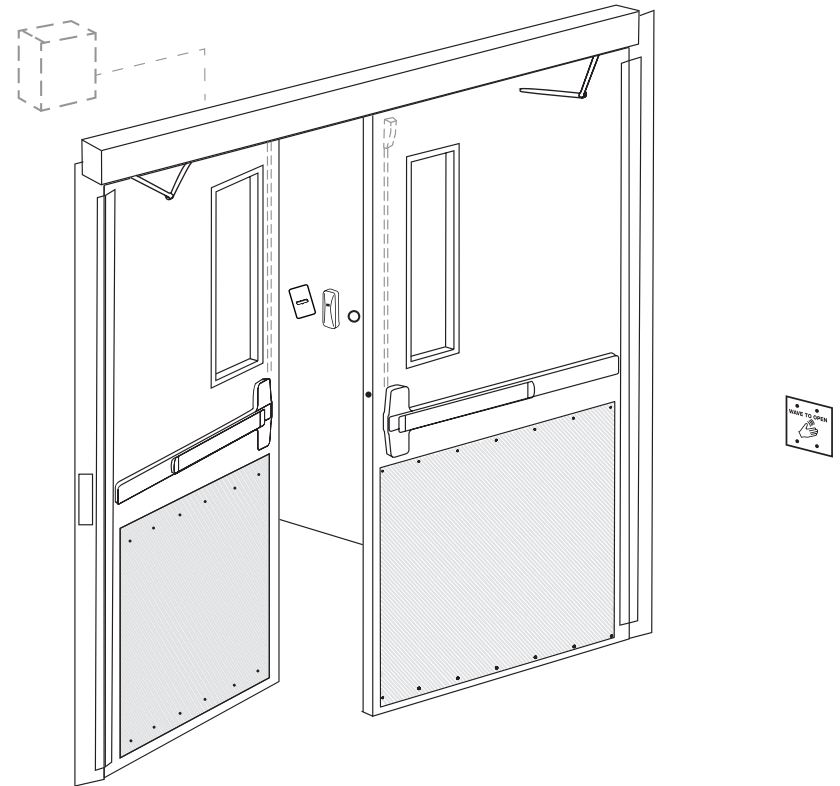


**40+ regional and factory  
training courses**  
available; 25+ online  
courses, 140+ educational  
and how-to videos, and  
60+ AIA courses available

# Touchless access solutions

Many people are reexamining their daily routine with health and wellbeing in mind. They are reconsidering where they go, who they interact with and what they touch. Allegion offers touchless technology that plays a role in prevention by decreasing the number of surfaces pedestrians come in contact with. While there are several ways to accomplish touchless operation, pairing low energy automatic operators with actuators or readers is the most common.

Allegion takes the complexity out of specifying touchless access solutions by providing **wiring and riser diagrams** for common applications that show you how all the components of the solution work together.



Automatic operators are key component in a touchless solution. They open the door electronically upon signal from an actuator, hold it open and then release it, allowing enough time for a pedestrian to pass through without touching the door.

### Electromechanical automatic operators

For applications where most pedestrians operate the door electronically, consider electromechanical automatic operators. These utilize a motor gearbox and control box to perform the opening and closing function. Upon receipt of an actuation signal, the motor drives the door open to 90°, where it is held for the programmed amount of time. Once the hold open time is complete, the motor releases its efforts and a spring drives the door shut to 0 latch. This design allows for reliable and consistent automatic actuation. Allegion electromechanical offerings are ANSI 156.19 and UL certified devices. They range in door leaf weight capabilities from 200 to 400 lb. for a variety of applications and needs.

#### Features:

- On-board power supply: Provides low voltage output from operator to power card readers, strikes, actuators and other peripherals
- Visual function indicators: Feedback LEDs or a digital screen guide the user through their interaction with the device

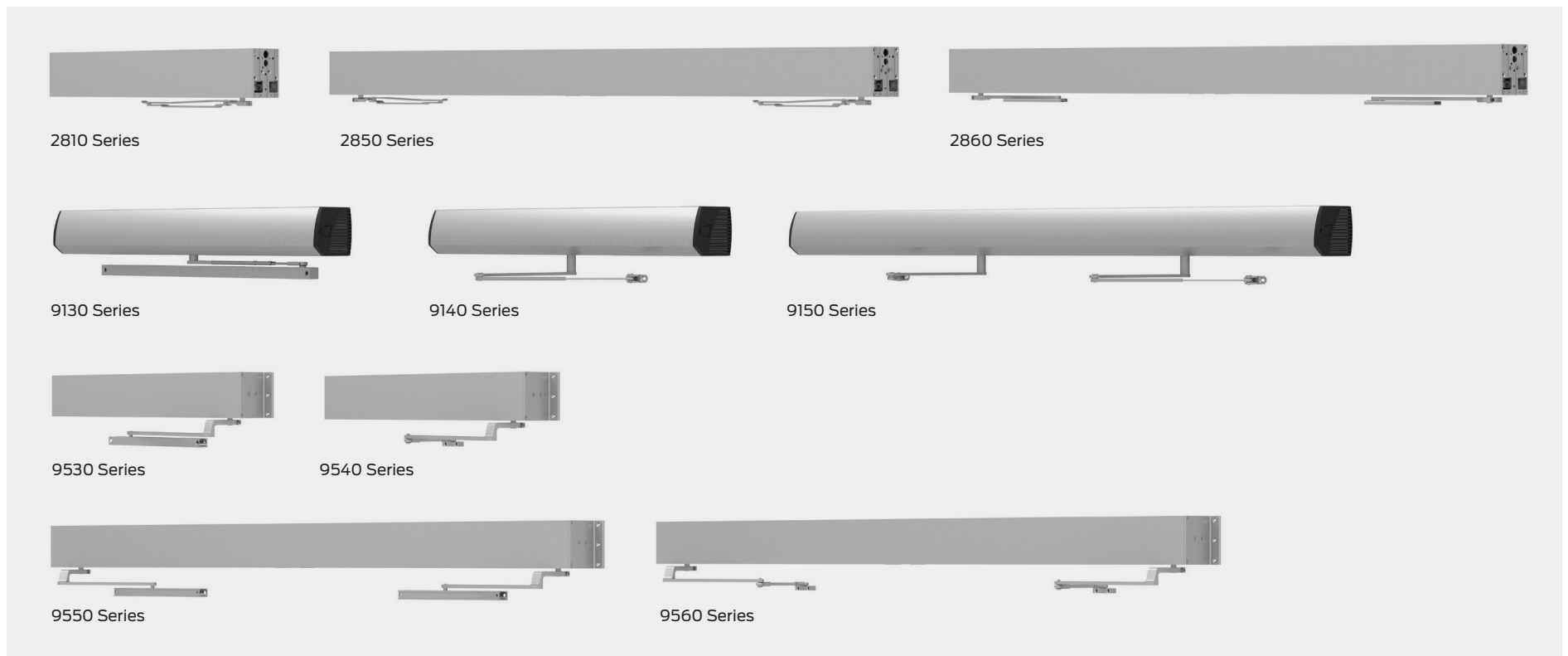
### Electrohydraulic automatic operators

Allegion also offers an innovative solution tailored to the needs of low to medium traffic doors, the LCN 6400 Series COMPACT™ operator. The unique modular design make it a simple and cost-effective solution to your facility meet basic needs related to accessibility and touchless access. Whether you are upgrading a single opening, renovating a portion of your building or constructing a new facility, the ANSI A156.19 certified COMPACT Series enables you to promote a healthy and accessible environment.

#### Features:

- Motor gear box mounts directly onto standard 4040XP mechanical closer with just a mounting plate and 4 screws
- 4040XP controls the closing of the door and be adjusted manually using the green dial and valves
- Intuitive user interface electronically programs opening speed, hold open time and power boost
- Configurable power capabilities to allow for simple plug into standard wall outlet or configuration with external power supply

## Electromechanical automatic operators

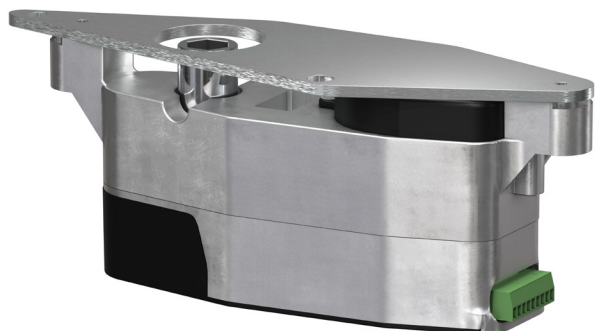


### Electromechanical low energy swing operators

Model	2810, 2850, 2860 Series	9130 Series	9530, 9550, 9560 Series	9140, 9150 Series	9540, 9550, 9650 Series	9550, 9560 Series
Application	Concealed mount	Surface mount, pull side	Surface mount, pull side	Surface mount, push side	Surface mount, push side	Surface mount, double egress
Family	Senior Swing	Benchmark	Senior Swing	Benchmark	Senior Swing	Senior Swing
Door weight	400 lb.*	200 lb.	400 lb.*	200 lb.	400 lb.*	400 lb.*
Push and go	Yes	Yes	Yes	Yes	Yes	Yes
Power boost	Yes	Yes	Yes	Yes	Yes	Yes
Low voltage output	24VDC	24VDC	24VDC	24VDC	24VDC	24VDC

\* Only up to 36" wide doors.

## Electrohydraulic automatic operators



6440 Series gearmotor  
module with mounting plate

### 6400 Series COMPACT operator

This low energy automatic operator can help your facility meet basic needs related to accessibility and touchless access. The core elements of the solutions are a motor gearbox assembly, a 4040XP mechanical closer and wireless or hardwired actuators. For existing openings, you can repurpose the 4040XP regular arm closer. For new openings, you can configure a complete solution to meet your needs.

Model	Description
Model	6400
Application	Pull side (door mount), parallel arm (door mount), top jamb (push side frame mount)
Family	COMPACT
Door weight	185 lbs
Push and go	No
Power boost	Yes
Low voltage output	24VDC (75mA to power RF receiver)



## Touchless actuators

Actuators are a critical component for low energy swing devices in order to achieve ANSI 156.19 compliance. To promote health and well-being, many facilities are now replacing traditional push buttons with touchless actuators.

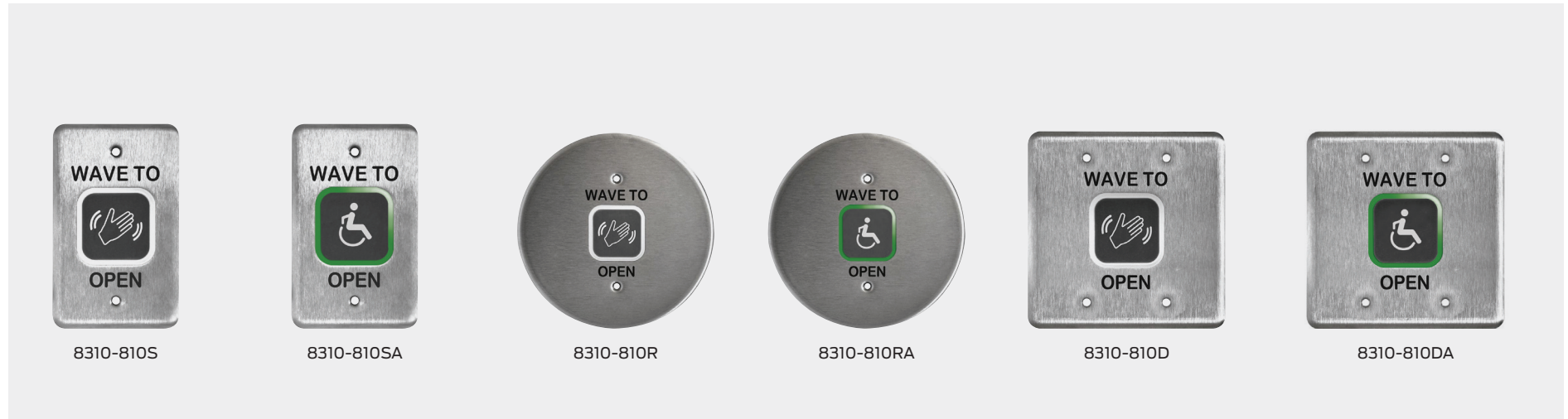
### Heavy duty touchless actuators

The LCN 8310-810 series of stainless steel actuators are designed for high use and abuse environments.

#### Features:

- Flush mounted design: aesthetically pleasing and less susceptible to accidental damage
- Stainless steel construction: for rugged performance in harsh environments
- IP65 rated: to protect electronic components from water and cleaning liquids
- Customizable features: Visual and audible signaling

## Touchless actuators



### Heavy duty touchless actuators

Model	8310-810S	8310-810SA	8310-810R	8310-810RA	8310-810D	8310-810DA
Material	Stainless steel	Stainless steel	Stainless steel	Stainless steel	Stainless steel	Stainless steel
Shape	Single gang	Single gang	Round	Round	Double gang	Double gang
Icon type	Wave	Wheelchair	Wave	Wheelchair	Wave	Wheelchair
Dimensions	2.75" x 4.5" x 0.98"	2.75" x 4.5" x 0.98"	6" Dia x 0.98"	6" Dia x 0.98"	4.5" x 4.5" x 0.98"	4.5" x 4.5" x 0.98"
Application	Interior/exterior (premium/heavy duty)	Interior/exterior (premium/heavy duty)	Interior/exterior (premium/heavy duty)	Interior/exterior (premium/heavy duty)	Interior/exterior (premium/heavy duty)	Interior/exterior (premium/heavy duty)
Feedback	Visible/audible	Visible/audible	Visible/audible	Visible/audible	Visible/audible	Visible/audible
Range	2" - 24"	2" - 24"	2" - 24"	2" - 24"	2" - 24"	2" - 24"
Hold time	1-30 sec	1-30 sec	1-30 sec	1-30 sec	1-30 sec	1-30 sec
Power	Wired	Wired	Wired	Wired	Wired	Wired
Actuation signal	Wired or RF/Wireless	Wired or RF/Wireless	Wired or RF/Wireless	Wired or RF/Wireless	Wired or RF/Wireless	Wired or RF/Wireless
Pre-configured kit availability	N/A	N/A	8310-3810RW includes (2) 8310-810R (2) 8310-885 (1) 8310-880	N/A	8310-3810DW includes (2) 8310-810D (2) 8310-885 (1) 8310-880	N/A



## Touchless actuators

Actuators are a critical component for low energy swing devices in order to achieve ANSI 156.19 compliance. To promote health and well-being, many facilities are now replacing traditional push buttons with touchless actuators.

### Standard touchless actuators

The LCN 8310-813 series of touchless actuators is designed for standard, medium-duty applications.

#### Features:

- Flush mounted design: aesthetically pleasing and less susceptible to accidental damage
- Silent activation: ideal for applications that seek to limit noise emission
- Variety of colors and form factors: available in black or white for single gang, double gang, jamb and round mounting styles
- Single and double gang face plates ship as pair

## Touchless actuators



### Standard touchless actuators

Model	8310-813*	8310-813*	8310-813WH*	8310-813WH*	8310-813J	8310-813JWH	8310-813R	8310-813RWH	
Material	Black, plastic	Black, plastic	White, plastic	White, plastic	Black, plastic	Black, plastic	Black, plastic	Black, plastic	
Shape	Single gang	Double gang	Single gang	Double gang	Jamb	Jamb	Round	Round	
Icon type	Wave	Wave	Wave	Wave	Wave	Wave	Wave	Wave	
Dimensions	2.75" x 4.5" x 0.75"	4.5" x 4.5" x 0.75"	2.75" x 4.5" x 0.75"	4.5" x 4.5" x 0.75"	1.68" x 0.75"	1.68" x 0.75"	6" Dia x 0.75"	6" Dia x 0.75"	
Application	Interior/exterior (medium duty/standard)		Interior/exterior (medium duty/standard)		Interior/exterior (medium duty/standard)		Interior/exterior (medium duty/standard)		
Feedback	None	None	None	None	None	None	None	None	
Range	4" - 24"	4" - 24"	4" - 24"	4" - 24"	4" - 24"	4" - 24"	4" - 24"	4" - 24"	
Hold time	0.5-30 sec	0.5-30 sec	0.5-30 sec	0.5-30 sec	0.5-30 sec	0.5-30 sec	0.5-30 sec	0.5-30 sec	
Power	Wired	Wired	Wired	Wired	Wired	Wired	Wired	Wired	
Actuation signal	Wired or RF/Wireless	Wired or RF/Wireless	Wired or RF/Wireless	Wired or RF/Wireless	Wired or RF/Wireless	Wired or RF/Wireless	Wired or RF/Wireless	Wired or RF/Wireless	
Pre-configured kit availability	8310-3813W kit includes (2) 8310-813 actuators (2) 8310-885 transmitters (1) 8310-880 receiver		N/A	N/A	8310-3813JW kit includes (2) 8310-813J actuators (2) 8310-885 transmitters (1) 8310-880 receiver		N/A	8310-3813RW kit includes (2) 8310-813R actuators (2) 8310-885 transmitters (1) 8310-880 receiver	N/A

\*Single and double gang face plates ship as pair.

## Touchless actuators

### Harsh conditions touchless actuators

The LCN 8310-815 is designed for harsh environments.

#### Features:

- NEMA 4/IP65 rated enclosure: for rugged and durable performance
- Designed for harsh environments: including outdoor applications
- Customizable detection zone: for flexibility and ease of use



---

#### Harsh conditions touchless actuators

---

8310-815

---

Stainless steel

---

Surface mount box

---

Wave

---

3.1" W x 3.2" H x 2.2" D

---

Interior/exterior

---

None

---

4-24"

---

0.5 sec

---

Wired

---

Wired or RF/Wireless

---

N/A

---

## Battery powered touchless actuators



8310-2210

8310-2310

8310-2320

8310-2330

8310-2340

### Battery powered touchless actuators

Model	8310-2210	8310-2310	8310-2320	8310-2330	8310-2340
Material	Stainless steel	Stainless steel	Stainless steel	Stainless steel	Stainless steel
Shape	Single gang	Single gang	Double gang	Jamb	Round
Icon type	Wave	Wave	Wave	Wave	Wave
Dimensions	2.75" x 4.5"	2.75" x 4.5"	4.5" x 4.5"	1.75" x 4.5"	6" diameter
Application	Interior only	Interior only	Interior only	Interior only	Interior only
Feedback	Visible & audible	Visible & audible	Visible & audible	Visible & audible	Visible & audible
Range	1 - 12"	1 - 12"	1 - 12"	1 - 12"	1 - 12"
Hold time	1 - 15 sec	3 - 30 sec	3 - 30 sec	3 - 30 sec	3 - 30 sec
Power	Battery (2 AA)	Battery (2 AA)	Battery (2 AA)	Battery (2 AA)	Battery (2 AA)
Actuation signal	Transmitter & receiver included	Wired or RF/Wireless	Wired or RF/Wireless	Wired or RF/Wireless	Wired or RF/Wireless
Pre-configured kit availability	8310-2210 is ONLY available as kit	N/A	N/A	N/A	N/A

## Transmitters

### 900 MHz receiver and transmitters

The LCN 8310-880 is a compact, long-range transmitter that complies with federal radio frequency regulations. The power draw of 30mA (transmitter)/40mA (receiver) allows for greater distance transmission. The 900 MHz transmitter is compatible with LCN's touchless actuation offerings. Without this solution, all touchless actuation plates will need to be hardwired into the operators' actuation inputs.

#### Features:

- Multi-color LEDs on receiver: for visual notification of signal strength and activation status
- Frequency hopping: for consistent transmission in areas with other 900 MHz devices
- Personalized options: for actuation with handheld transmitters
- Learn modes: for door sequencing
- Multiple door actuation capabilities: per transmitter
- 900MHz receiver: can be programmed with up to 74 transmitters simultaneously

Model	Description
8310-880	900 MHz receiver
8310-881	Handheld transmitters - 1 button
8310-882	Handheld transmitters - 2 button
8310-883	Handheld transmitters - 3 button
8310-884	Handheld transmitters - 4 button
8310-885	Retrofit transmitter <sup>1</sup>
8310-886	Hardwired transmitter <sup>2</sup>

1. Despite allowing for a wireless actuation, the retrofit transmitter does require a power draw via wire.  
2. Recommended use with pushbuttons.

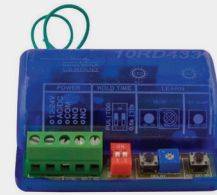


## Transmitters

### 433 MHz receiver and transmitters

The LCN 8310-865 is a compact, receiver that complies with federal radio frequency regulations and is designed to receive signals through barriers. The 433 MHz portfolio is compatible with LCN's touchless actuation offerings and can be used as an alternative to hardwiring an actuator.

Model	Description
8310-865	433 MHz receiver
8310-861	Handheld transmitters - 1 button
8310-862	Handheld transmitters - 2 button
8310-863	Handheld transmitters - 3 button
8310-864	Handheld transmitters - 4 button
8310-844	Transmitter, wireless, 1 channel, wall mount, 9V
8310-844J	Transmitter, wireless, 1 channel, jamb mount, 3V



8310-865



8310-861



8310-862



8310-863



8310-864



8310-844



8310-844J

## Touchless actuators

# Auxiliary hardware that can be powered off an automatic operator

### Two touchless actuators

Model	8310-810	8310-813	8310-815
Senior Swing	Yes	Yes	Yes
Benchmark	Yes	Yes	Yes
Falcon	No	Yes*	Yes

### Two touchless actuators and a receiver

Model	8310-810	8310-813	8310-815
Senior Swing	Yes	Yes	Yes
Benchmark	Yes	Yes	Yes
Falcon	No	No	Yes*

### Two touchless actuators, a receiver and a retrofit transmitter

Model	8310-810	8310-813	8310-815
Senior Swing	Yes	Yes	Yes
Benchmark	Yes	Yes	Yes
Falcon	No	No	No

\* Very close to capacity.

# Restroom actuator kits

The restroom actuator kits are intended for single occupancy and family restrooms. Dual color illuminated LEDs provide notification of whether the restroom is occupied or vacant. Opening/closing and locking of the door is accomplished with a touchless actuator system. A logic module controls the electric strike, door operator, switches, and illumination.



## 8310-2410

### Touchless Restroom Kit

- Advanced logic relay, 2 amp power supply, control box and transformer
- Wired touchless switch, “Wave to Lock”, light ring, stainless faceplate
- Wired touchless switch, “Wave to Open”, light ring, double gang stainless faceplate
- Wired touchless switch, “Wave to Open”, double gang stainless faceplate
- Electric strike, Grade 2 ANSI, 3 faceplates
- Door position switch, surface

## About Allegion

Allegion (NYSE: ALLE) is a global pioneer in seamless access, with leading brands like CISA®, Interflex®, LCN®, Schlage®, SimonsVoss® and Von Duprin®. Focusing on security around the door and adjacent areas, Allegion secures people and assets with a range of solutions for homes, businesses, schools and institutions.

For more, visit [www.allegion.com](http://www.allegion.com)

KRYPTONITE ■ LCN ■  ■ STEELCRAFT ■ VON DUPRIN