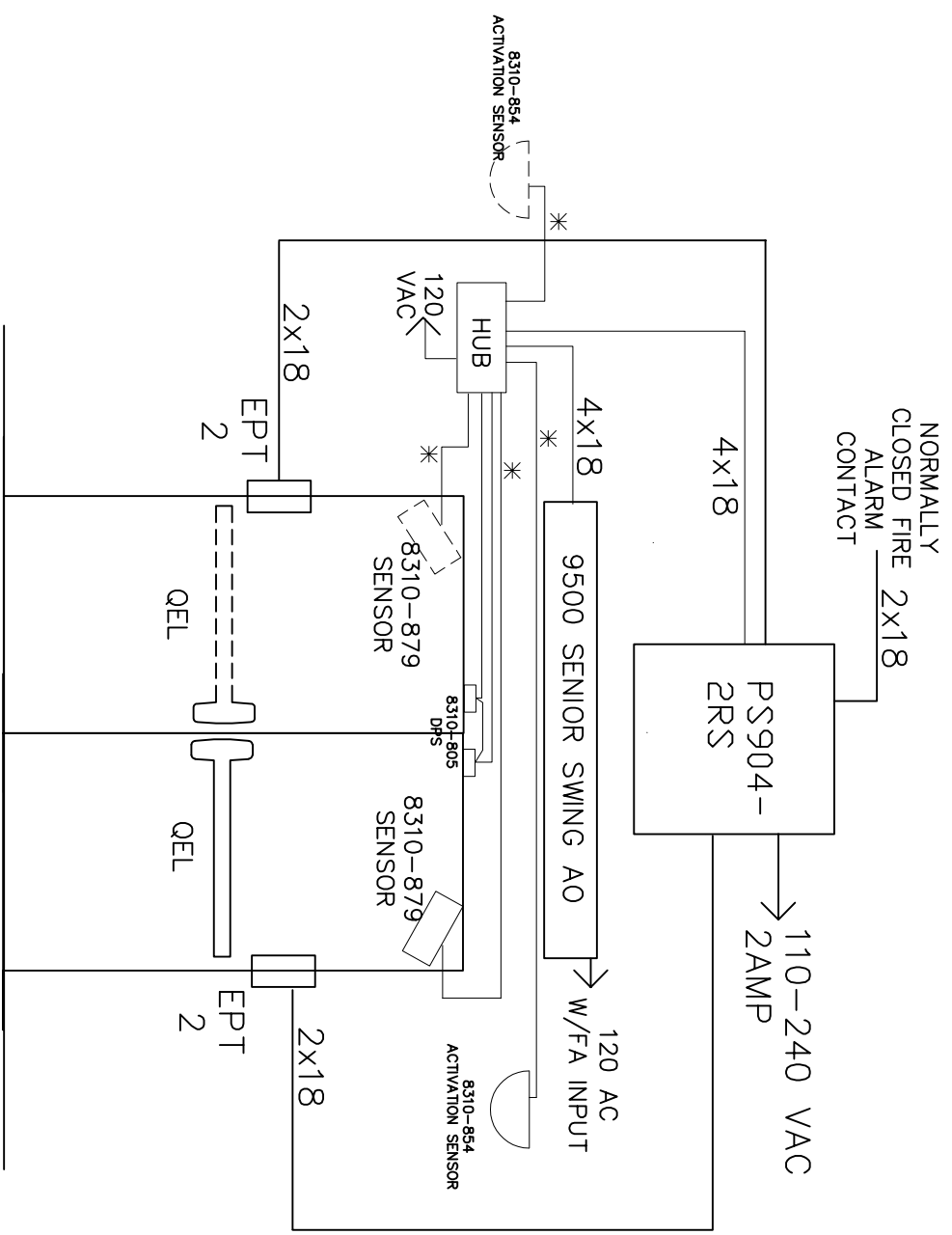


THIS DIAGRAM REPRESENTS A GENERIC CONFIGURATION. CUSTOM WIRING DIAGRAMS CAN BE ACQUIRED BY CONTACTING TECHNICAL SUPPORT.



* CABLING HARNESSES PROVIDED WITH SENSOR

NOTES:
 1) ALL LOW VOLTAGE WIRING TO BE STANDARD MULTI-CONDUCTOR CABLE CODED WITHOUT SPLICES.
 2) WIRING TO CONFORM TO APPLICABLE NATIONAL, STATE AND LOCAL ELECTRICAL CODES.
 3) REFER TO SPECIFIC PRODUCT INSTALLATION INSTRUCTIONS FOR SPECIFIC WIRING REQUIREMENTS.
 4) THIS DRAWING IS FOR GRAPHICAL REPRESENTATION OF PRODUCTS DETAILED IN THE HARDWARE SET ONLY.
 5) ADDITIONAL WIRING WILL BE REQUIRED FROM ACP THAT IS NOT SHOWN HERE. CONSULT PROVIDER FOR DETAILS.

HARDWARE USED:
 2 XD QEL DEVICE
 1 PSS904-2RS POWER SUPPLY
 2 EPT POWER TRANSFER
 1 9500 SENIOR SWING AUTO OPERATOR PAIR
 2 PAIR 8310-879 SAFETY SENSORS WITH 1 CONTROLLER
 2 8310-805 DPS
 2 8310-854 ACTIVATION SENSORS
 TYPE PAIR QEL PANICS WITH AD AND SENSORS

OPERATION: TO HOLD QEL LATCHES RETRACTED.
 8310-854 ACTIVATION SENSORS TO SWING DOORS OPEN.
 8310-879 SAFETY SENSORS TO KEEP DOORS FROM SWINGING INTO ONCOMING TRAFFIC
 THIS CONFIGURATION REPRESENTS A FIRE RATED OPENING. IN THIS EXAMPLE ALL WIRING CONNECTIONS ARE MADE IN THE PSS9104 ENCLOSURE OR AT HUB.
 DATE DRAWN: 03-31-20
 REVISION DATE: 03-31-20

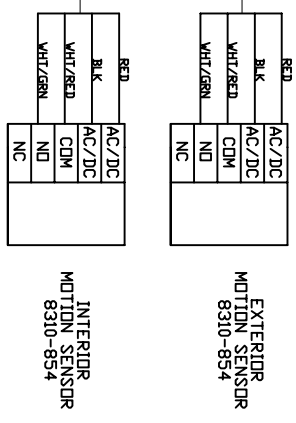
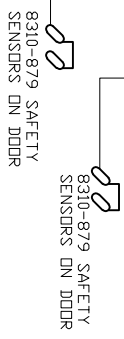
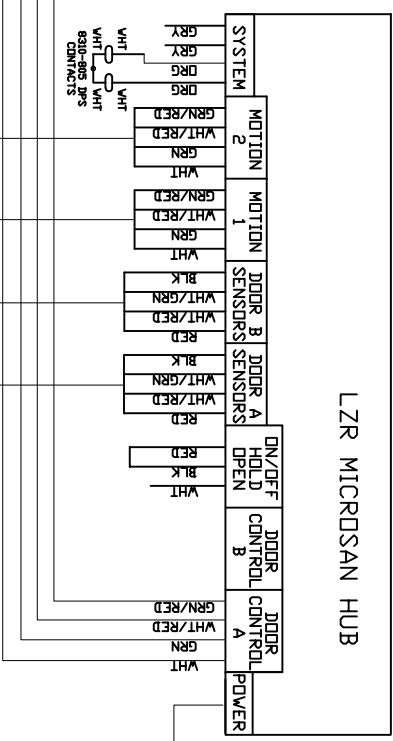
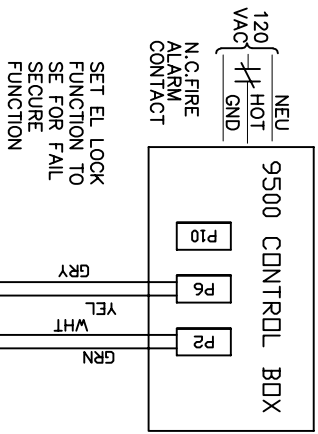
ALLEGION™

TITLE: DOUBLE EGRESS FIRE RATED PAIR, QEL, 9500 AO WITH SENSORS

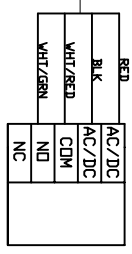
DRAWING TYPE: RISER DIAGRAM

DWG NO: 113522
 DRAWN BY: B DIVE/J WEISS

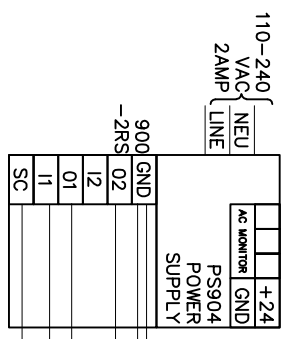
REV: A



EXTERIOR MOTION SENSOR 8310-854



INTERIOR MOTION SENSOR 8310-854



NC FIRE ALARM CONTACT

THIS DIAGRAM REPRESENTS A GENERIC CONFIGURATION. CUSTOM WIRING DIAGRAMS CAN BE ACQUIRED BY CONTACTING TECHNICAL SUPPORT.

- NOTES:
- 1) ALL LOW VOLTAGE WIRING TO BE STANDARD. MULTI-CONDUCTOR CABLE CODED WITHOUT SPLICES.
 - 2) WIRING TO CONFORM TO APPLICABLE NATIONAL, STATE AND LOCAL ELECTRICAL CODES.
 - 3) REFER TO SPECIFIC PRODUCT INSTALLATION INSTRUCTIONS FOR SPECIFIC WIRING REQUIREMENTS.
 - 4) THIS DRAWING IS FOR GRAPHICAL REPRESENTATION OF PRODUCTS DETAILED IN THE HARDWARE SET ONLY.
 - 5) ADDITIONAL WIRING WILL BE REQUIRED FROM ACP DETAILS.

- HARDWARE USED:
- 2 VFD GEL PANIC DEVICE
 - 1 PS904-GRS POWER SUPPLY
 - 2 EPT POWER TRANSFER
 - 1 9500 SENIOR SWING AUTO OPERATOR PAIR
 - 2 PAIR 8310-879 SAFETY SENSORS WITH 1 CONTROLLER
 - 2 8310-805 DPS
 - 2 8310-884 ACTIVATION SENSORS
- TYPE: PAIR GEL PANICS WITH AD AND SENSORS

OPERATION: TO HOLD GEL LATCHES RETRACTED.

8310-884 ACTIVATION SENSORS TO SWING DOORS OPEN.

8310-879 SAFETY SENSORS TO KEEP DOORS FROM SWINGING INTO ONCOMING TRAFFIC

THIS CONFIGURATION REPRESENTS A FIRE RATED OPENING.

IN THIS EXAMPLE, ALL WIRING CONNECTIONS ARE MADE IN THE PS9104 ENCLOSURE OR AT HUB.

DATE DRAWN: 03-31-20

REVISION DATE: 03-31-20



TITLE: DOUBLE EGRESS FIRE RATED PAIR, GEL, 9500 AO WITH SENSORS

DRAWING TYPE: WIRING DIAGRAM

DWG NO: 113522W

DRAWN/CHECKED BY: B DOWE/J WEISS

REV: A