



ALLEGION™

# Product guide

For security and access control



For more than 100 years, Allegion brands have been providing innovative security solutions ranging from wireless security products and biometrics to high security mechanical locking systems.

With a wide range of solutions and services, Allegion has what you need, no matter how demanding your project specifications may be. And we stand behind every product we make with some of the best service and support in the business. It's this commitment to design, performance and technology that ensures you can stand behind our products too.

## **Our products**

<b>4-5</b>	<b>Steelcraft</b>
<b>6-17</b>	<b>Schlage</b>
<b>18-21</b>	<b>Von Duprin</b>
<b>22-23</b>	<b>LCN</b>
<b>24</b>	<b>Glynn-Johnson</b>
<b>25</b>	<b>Ives</b>
<b>26-27</b>	<b>ZERO</b>
<b>27-28</b>	<b>Falcon</b>



## Doors and frames



### Products

**Frames**

**Flush doors**

**Full glass entrance doors**

**GRAINTECH® doors**

**Severe weather doors**

**Acoustical doors**

## Steel doors and frames that set the industry standard

No other manufacturer offers as robust a selection of steel doors and frames as Steelcraft. Our sole focus is on the design, manufacture and constant improvement of steel doors and frames, and it shows. Designed for institutional, commercial and industrial applications, our doors and frames have continuously set the industry standard for high performance, reliability and style.





# The only door good enough to be called **Steelcraft**



## GRAINTECH doors

The beauty of wood and the strength of steel come together in Steelcraft's GRAINTECH Series of stainable steel doors. Our exclusive engraving and staining process simulates a wide variety of wood finishes, from ash to walnut, including custom finish matching. All doors are fire-rated 20 minutes to three hours.



## LS Series stainless steel doors

Steelcraft LS Series stainless steel doors utilize all stainless steel components and internal reinforcements protecting it from corrosion both where you see it and where you don't. An excellent value built to withstand the harshest environments. The Steelcraft LS Series also has custom offerings – delivering performance and good looks.



## Severe weather doors

Hurricane-force storms and tornados are no match for Steelcraft's line of weather-protection door systems. Our Paladin tornado doors and H Series hurricane-rated doors are built to exacting standards that ensure powerful protection when it's needed most.

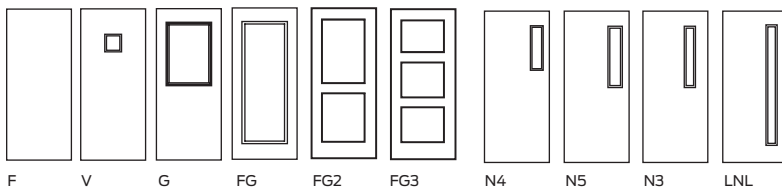


## Acoustical doors

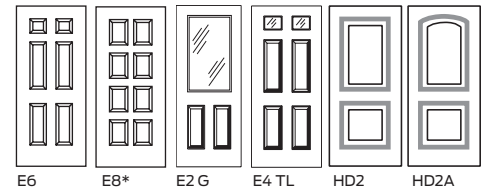
Steelcraft sound control doors and frames are an ideal solution for applications ranging from sound studios to school band rooms, hospitals, office complexes and museums. These special-use doors deliver quality you can count on.

## Typical elevations

### Flush panel and glass doors



### Embossed panel doors



\*Available in 20-gauge only.

# Mechanical locks and electronic access control solutions

## **Products**

**Mechanical locks**

**Key systems**

**Electronic locks**

**Credentials**

**Readers**

**Biometrics**

**Electric strikes**

**Electromagnetic locks**

**Power supplies**

**System accessories**



For more than 90 years, Schlage has been creating the strongest and most technologically advanced security products for homes, multifamily, commercial and institutional buildings. From durable mechanical locks to comprehensive electronic access control solutions and biometrics, Schlage provides protection at critical moments – when property and personal security are at stake.



### **Commercial electronic security**

Schlage is at the forefront of electronic access control with a comprehensive line of products ranging from electronic locks to mobile credentials. Our electronic products are versatile, user friendly and designed to provide the toughest, most reliable security possible in applications ranging from schools and hospitals to banks and office buildings.

### **Commercial mechanical security**

Schlage built its legacy on the strength and innovation of its commercial mechanical security products. Our broad line of mechanical access control systems ranges from vandal- and break-in-resistant door hardware to ADA compliant levers, high security key systems and portable security products. Many of our commercial lines can also be suited to provide the style you need across the varying needs of commercial buildings.



# Networked electronic locks

Networked electronic locks from Schlage are built on an open architecture platform allowing for easy integration into virtually any access control or other software system. Real-time monitoring capability provides the ability to track who went where, and when on a building- or campus-wide application.



## NDE Series

NDE Series wireless locks were developed specifically for facilities that want to upgrade to electronic credentials for improved security and efficiency. They are ideal for interior office doors, common area doors and sensitive storage spaces with a cylindrical door prep. When connected to the ENGAGE Gateway, NDE Series locks can offer real-time access control with software from one of our access control alliance partners.

- Built-in door position sensor on the lock and strike plate eliminates the time and cost to install
- Fits standard mechanical cylindrical door prep with no additional holes
- Compatible with most leading key systems

## AD Series

AD Series networked locks are modular, customizable and upgradeable by design, allowing them to fit the needs of any application now and adapt to meet future needs without removing them from the door.

- Secure encrypted data transmission
- Streamlined integration with virtually any access control software system
- Compatible with most major brands of master key systems
- Wireless accessories available for remote gate, elevator and portable applications

### AD-400 Wireless

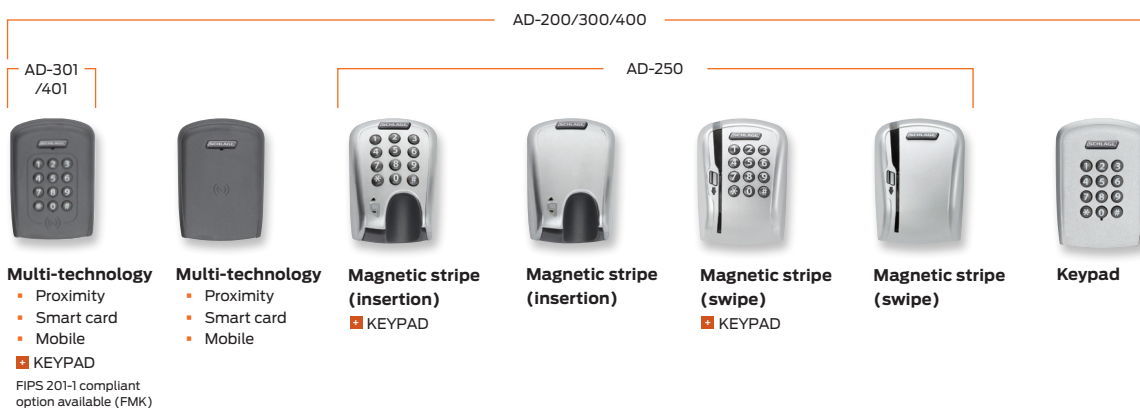
Provides many of the key benefits of a hardwired access control system – without the wires. This battery-powered lock allows you to secure doors that were traditionally difficult to run wires to in the past.

### AD-300 Hardwired

Provides instant control of your access control system through real-time communication to your access control software panel.



## AD Series reader module compatibility



# Standalone electronic locks

Standalone access control solutions provide added security, convenience and efficiency for single openings that do not require real-time monitoring. They allow you to reduce rekeying costs by issuing electronic credentials which can easily be added or deleted at any time. Audit trails tell you who requested access and when\*.

\* Audit trails not available on CO-100 locks



## NDE Series

NDE Series wireless locks can move seamlessly from a standalone to a networked solution. In standalone applications, NDE can be managed with the ENGAGE cloud-based web and mobile apps to configure lock settings, add users, and view audits and alerts from anywhere. And with built-in Wi-Fi, NDE Series locks can connect directly to an existing Wi-Fi network enabling automatic updates to configuration and access.

- Bluetooth® enables lock to connect directly smart devices for simple and quick updates
- Built-in door position sensor on the lock and strike plate eliminates the time and cost to install
- Fits standard mechanical cylindrical door prep with no additional holes
- Compatible with most leading key systems

## AD Series

AD Series standalone battery-operated electronic locks by Schlage provide the security, efficiency and convenience of electronic access control without the cost or complexity of a fully networked system. Easily add or delete users, track usage and manage data – all without installing a facility-wide network. And, because these locks are part of the AD Series, they can be upgraded to a wireless networked solution at any time allowing you to grow your access control system as your needs change.

- Audit trail reports track usage and events
- Battery operation eliminates wires to the door
- Compatible with most major brands of key systems

### AD-200

Update users and access rights at the lock using the keypad or handheld device. Like all AD Series electronic locks, the AD-200 is easily upgradeable to a networked lock by replacing reader and communication module.

### AD-250

Provides instant control of your access control system through real-time communication to your access control software panel.



AD-200



AD-250

# Standalone electronic locks (cont.)

## CO Series

CO Series battery-powered standalone locks are an economical way to upgrade from traditional mechanical locking devices. The CO Series is based on the trusted design of Schlage ND and L Series mechanical locks and is ideal for single doors that are independently controlled.



### CO-100

- Manually programmable with user rights stored on lock
- Up to 500 unique 3-6 digit PIN codes
- Keypad only



### CO-220

- Remote fob and visual indicator for lockdown
- Manually or computer programmable with user rights stored on lock
- Up to 2000 users and audits
- Proximity, magnetic stripe or keypad reader options



### CO-200

- Manually or computer programmable with user rights stored on lock
- Up to 2000 users and audits
- Proximity, magnetic stripe or keypad reader options



### CO-250

- Computer programmable with user rights stored on card
- Unlimited number of user and up to 4000 audits\*
- Magnetic stripe reader options available

\*Depending on access control software

## CO Series reader module compatibility



# Schlage electronic lock lever styles and finishes

## Lever styles

Standard cylinders shown, SFIC and FSIC also available.



Sparta



Rhodes



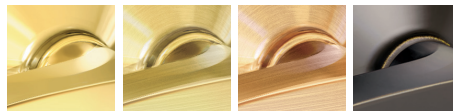
Athens



Tubular

## Finishes

Warm tone finishes



605  
Bright brass

606  
Satin brass

612  
Satin bronze

643e  
Aged bronze

Cool tone finishes



619  
Satin nickel

625  
Bright chrome

626  
Satin chrome



# Readers and credentials

Allegion's comprehensive portfolio of Schlage readers and credentials not only features cutting-edge security technologies, but provides the versatility and simplicity desired of any electronic access control solution.

## Readers

Allegion's comprehensive reader lineup offers a streamlined portfolio of wall-mount devices designed to meet the access control needs of any facility or business. Schlage readers communicate with most security systems and products and read a variety of card formats, including magnetic stripe, proximity, smart and NFC, offering a complete solution today and an effortless migration path to future technologies. The simplified line of Schlage multi-technology readers offers five models suitable for almost any installation. The Schlage smart and proximity readers provide ideal options for installations that require one specific technology solution.

- Accommodates interior, exterior, metal and non-metal installation environments
- Wiegand output for simple interface with most access control panels
- Ability to read magnetic stripe, proximity, smart and mobile credentials
- FIPS 201-1 compliant
- Quick-connect design for easy installation
- Easy-to-install mounting bracket



## Credentials

With the latest in contactless smart card and traditional proximity card technologies, Allegion offers a credential solution for every budget and business need.

Schlage 13.56 MHz smart cards with MIFARE® Classic and MIFARE DESFire™ EV1 technologies utilize encrypted data, providing an extra layer of security. Schlage smart credentials also support a variety of applications beyond access control, such as transit, cashless vending and cafeteria point-of-sale.

### Smart technology

Using MIFARE DESFire EV1 - This card protects sensitive data by utilizing extra layers of security protection and features the most rapid data transfer in the industry.

Using MIFARE Classic - Ideal for facilities with moderate security needs and for business that want to use credentials to support multiple business functions.

### Proximity technology

Cost-effective solution for facilities with less demanding security needs.

### Multi-technology

Extremely flexible solution that uses both proximity and smart technology, enabling easy migration from one technology to the other

### Mobile

aptiQmobile™ takes campus and work life to the next level by providing the convenience of using a smart phone the same way a smart card is used today. This easy-to-use mobile app utilizes NFC (Near Field Communication) technology. Use your phone to access secure buildings and many additional services. Just hold your phone up to an Schlage reader and you're in.



## Von Duprin electric strikes

Electric strikes are used as part of many electronic access control systems to provide added security and conveniences such as traffic control and remote release. We offer a complete portfolio of new construction and aftermarket electric strikes to address the unique needs of your application.

- Heavy-duty strikes for high-traffic areas
- Medium and traffic control strikes for interior use
- Cylindrical, mortise and exit device compatibility
- Versatile aftermarket solutions



## PS900 Series power supplies

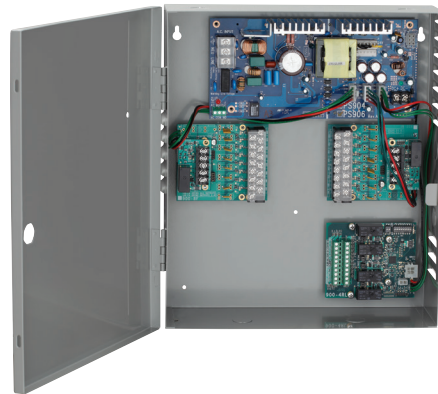
**Designed for superior flexibility, performance and ease of use**

Alllegion's PS900 Series features three Schlage power supplies to support most electronic access control devices and one Von Duprin power supply that is specially designed for high in-rush current used with many electrified exit devices.

This comprehensive line of UL 294 certified power supplies can be outfitted with a variety of option boards to support functional capabilities, including basic fuse protection, simple relay, and advanced logic such as complex sequencing and timing functions.

All PS900 Series power supplies offer a constant output rating at 12/24 VDC, universal 120 VAC to 240 VAC input, and polarized option board connectors.

- **Schlage PS902**  
2A @ 12/24 VDC output, field selectable with jumper; single polarized connector for distribution board
- **Schlage PS904**  
4A @ 12/24 VDC output, field selectable with jumper; two polarized connectors for distribution boards
- **Schlage PS906**  
6A @ 12/24 VDC output, field selectable with jumper; three polarized connectors for distribution boards
- **Von Duprin PS914**  
4A @ 12/24 VDC output, field selectable with jumper; two polarized connectors for distribution boards. Designed with high in rush current for powering electrified panic devices



## Electromagnetic locks

Electromagnetic locks are used to secure the door in conjunction with push bars, request-to-exit devices, or credential readers for fail-safe applications when code permits.

Schlage's broad portfolio of electromagnetic locks offers a solution for most every application. Whether it's securing a hospital laboratory, monitoring a controlled area in an airport or providing traffic control for doors in an institutional building, Schlage magnetic door locks are designed to exceed the standards set by the Builders Hardware Manufacturers Association (BHMA). The portfolio encompasses a variety of hold force ratings including 500 lbs. for traffic control, 1000 lbs. for high security and 1500 lbs. for maximum security, as well as specialty locks for unique applications.



### Electromagnetic locks

Model	Application	Holding force (lbs.)
M420*	Traffic control	500
M450*	High security	1000
M490*	Max security	1500
M490DE*	Delayed egress	1500
M490G	Exterior gate	1500
M390RFK	Aftermarket replacement	1500

### Electromagnetic specialty locks

Model	Application	Holding force (lbs.)
GF3000SM	Shear lock surface	3000
GF3000	Shear lock mortise	3000
320M	Sliding door	500

Note: Available in basic or plus (P) configuration. Plus configuration includes intelligent sensing and reporting features needed to integrate with access control systems.

\*Double door locks available.

## System accessories

Schlage system accessories include a variety of devices that easily integrate with most existing security systems to enable specific functionality whether in standalone applications or as part of networked access control systems. Our portfolio includes:

- Pushbuttons
- Keyswitches
- Request-to-exit devices
- Monitoring stations
- Other accessories



## Biometrics - hand geometry readers

Biometric products identify people by analyzing their unique human characteristics. Schlage Hand Geometry readers use field-proven technologies to provide increased security at any door and to ensure that the right person is at the right place at the right time. These technologies are frequently used in universities, data centers, day care centers, airports, health care facilities and government buildings.

Schlage biometrics offers biometric technology as a highly secure alternative to easily lost or compromised ID cards and PIN numbers. Not only are they more secure, but our biometric hand readers are amazingly versatile and can fit the needs of nearly any type of business.

- Can be used outdoors with an enclosure
- Fast and easy to use
- Field-proven reliable technology
- Integrates into existing systems
- Increases convenience by eliminating cards
- Stand-alone or networked options
- Antimicrobial coating built into the platen





# Schlage commercial locks



L-Series shown

## Grade 1 Mortise Locks

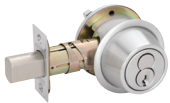
The most durable lock we sell, the L Series mortise lock features an available universal lock case that provides ten functions in one case. A fully wrapped, heavy-gauge steel case protects against door edge attacks. The hub blocking plate protects against spindle manipulation. No exposed trim mount screws ensure sleek mounted appearance.



ND Series shown

## Grade 1 Cylindrical Locks

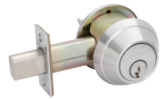
Our toughest cylindrical lock, the ND Series offers a thru-bolted mechanism for positive interlock to the door, concealed mounting screws and independent, heavy-duty spring cages for effective lever support. All ND Series lever locksets are non-handed for easy installation.



B560 Single Cylinder shown

## Grade 1 and Grade 2 Deadbolts and Deadlatches

Our full line of Grade 1 and Grade 2 deadbolts and deadlatches complement our lock lines and provide added ANSI-approved protection for exterior entrance doors. A choice of styles and finishes ensures a consistent look across doors and throughout your building.



B660 Single Cylinder shown



AL Series Cylindrical



A Series Cylindrical

## Grade 2 Locks - Cylindrical and Tubular Locks

Our Grade 2 cylindrical locks offer a through-bolted lock chassis, stainless steel interlocking spindle and heavy-duty springs for extended lever life and support. Our Grade 2 tubular locks have an interconnected chassis and latchbolt and are available in styles and finishes to suite easily with other door hardware.



S Series Tubular



S200 Series Tubular

Schlage products meet or exceed many of the following certifications and industry standards. Contact your Allegion representative for your specific requirements.


 = BHMA certified

 = ANSI tested

 = UL and/or cUL Listed

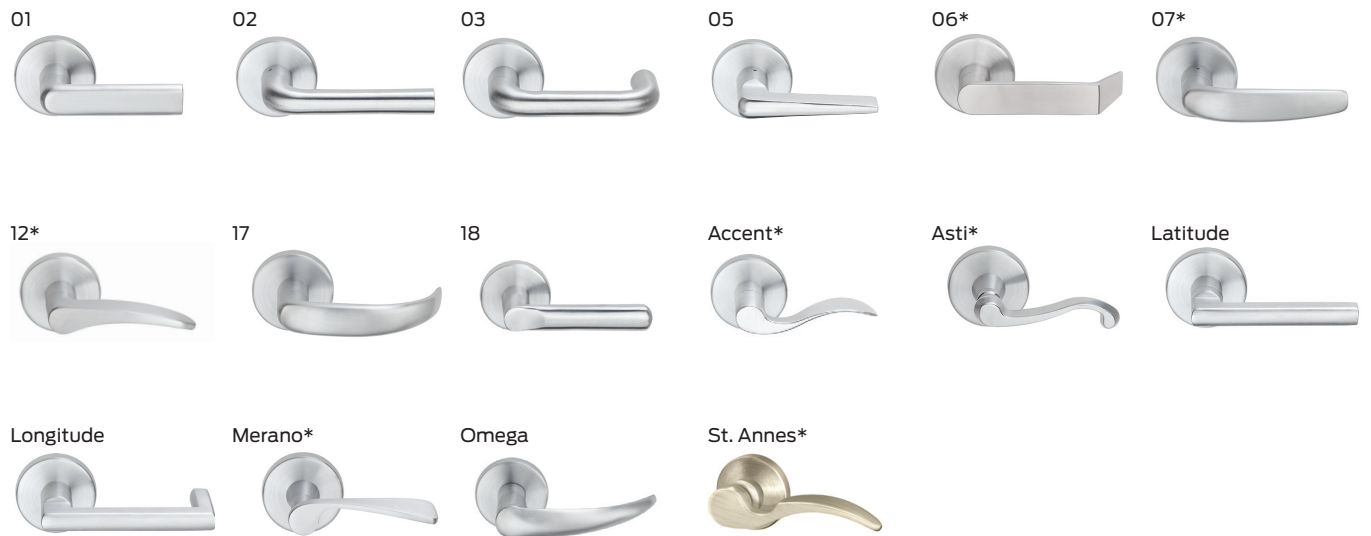
 = Complies with ADA

 = Helps meet LEED certification

 = Antimicrobial Coating Available

 = Safe Schools locks on select functions

## L Series lever designs (additional styles shown online)



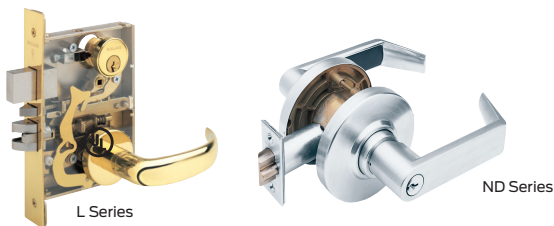
## ND Series lever designs



\* Lever designs can be suited with Von Duprin and Schlage Residential.

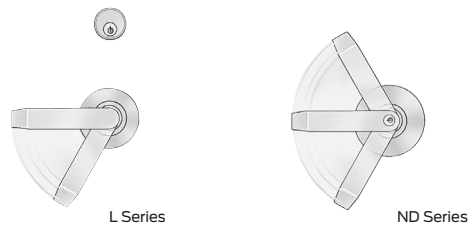
Refer to page 30 for available finishes.

## Electrified mechanical locks



Schlage L Series and ND Series locks make a great choice for electrified openings. They offer the ultimate in toughness, style and installation flexibility for a wide range of applications.

## Vandlgard® protection



Schlage L Series and ND Series locks with Vandlgard provide exceptional vandal-resistant performance designed for maximum accessibility, security and durability in heavy-duty traffic applications subject to abuse. The unique features of Vandlgard prevent damage to internal lock components caused by excessive force from persons kicking, hitting or standing on the lever to gain access. Vandlgard functions maintain total architectural design and key system compatibility with your Schlage commercial locks.

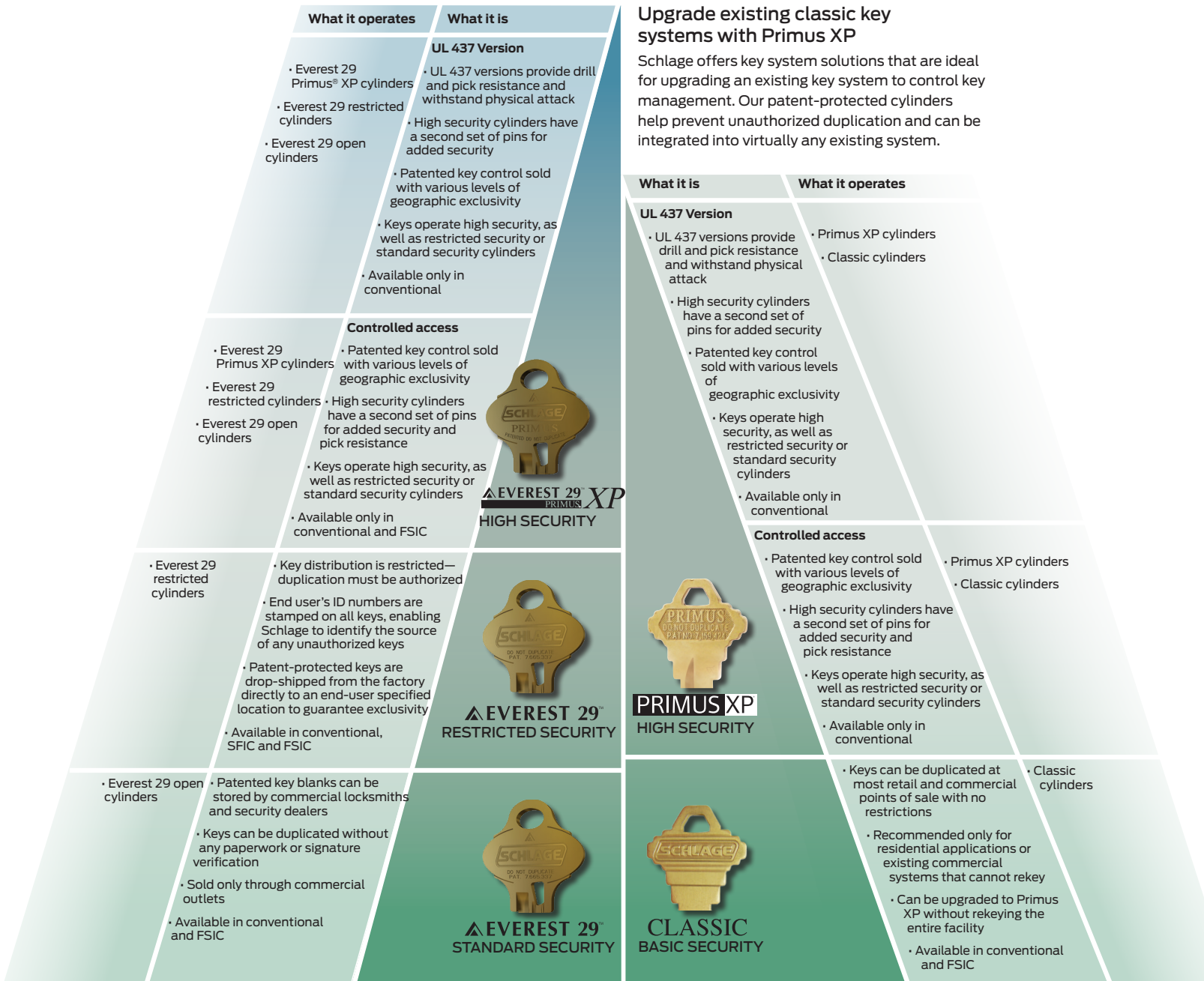
# Choose the right level of key control

## Protect new key systems with Everest 29™

Schlage can help you design a system that can grow and change along with your needs, allowing you the flexibility to upgrade your security without the need to replace all your cylinders.

## Upgrade existing classic key systems with Primus XP

Schlage offers key system solutions that are ideal for upgrading an existing key system to control key management. Our patent-protected cylinders help prevent unauthorized duplication and can be integrated into virtually any existing system.







**VON DUPRIN®**

## Exit devices

### **Products**

**Touchbar exit devices**

**Specialized devices**

**Crossbar exit devices**

**Touchbar options**

**Inpact® recessed exit devices**



Since pioneering the first exit device in 1908, Von Duprin life safety products have provided unparalleled quality, performance and flexibility for schools, hospitals, stadiums and public buildings.

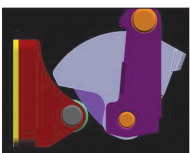
From innovative exit devices to electronic access control solutions and accessories, Von Duprin never compromises when lives are at stake. In fact, an independent study of more than 100 commercial facilities across the U.S. documented that Von Duprin exit devices require significantly less maintenance over a 30-year period than any other brand - providing the confidence and peace of mind that at critical moments of life safety, Von Duprin exit devices will perform.



## Touchbar exit devices

Von Duprin's lineup of touchbar exit devices bring together modern styling, performance, safety and fire-rated hardware for any application.

### Extra Protection



For extra protection and greater security, the XP 98/99 Rim Exit Device features an innovative latching concept with a patented center case. This provides twice the static load force resistance of standard exit devices making it ideal for openings that receive violent "pull force" attack.

### Wide stile panic and fire-rated



Series 98 shown

The most popular exit device on the market with features and options to meet all panic or fire exit applications for both flush and wide stile doors. The devices are mechanically identical and offer a choice of a grooved (Series 99) or smooth (Series 98) mechanism case, as well as a full range of outside trim, lever designs and finishes.

### Narrow stile



Series 33A shown

Series 33/35 complements Series 98/99 for use on narrow stile doors and offers many of the same features and options of Series 98/99. Choice of grooved (Series 33) or smooth (Series 35) mechanism case.

## Concealed vertical cable system

This revolutionary new patent pending concealed vertical cable (CVC) system replaces traditional rods and makes life easier for installers, architects and everyone who walks through the door.

The system uses proven cable technology in a whole new way, giving doors that require a vertical exit device the same strength and security in a system that's easy to install and maintain. Designed for use with Von Duprin 98/99 and 33A/35A Series exit devices, the CVC system provides greater security for the opening, with the streamlined aesthetics that architects and customers prefer.

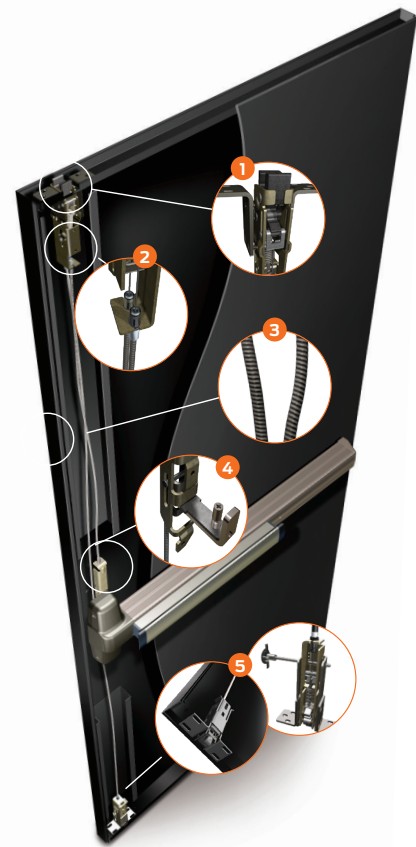
### Easy installation and hassle-free maintenance.

- 1 Top latch with greater than 90-degree bolt-to-strike engagement enhances security.
- 2 Field sizeable, enclosed cable system installs as one assembly.\*
- 3 Stainless steel cables with Teflon® liner prevent corrosion and increase system strength.
- 4 Single-point attachment streamlines installation.
- 5 Bottom latch height adjustable with door hanging.

\*Wood door solutions installed as two assemblies.

### Standard features

- Available options: All current 98/99 and 33A/35A mechanical, electrical and trim options (Exception TL and TL-BE)
- Standard full-length cable assembly or available less bottom latch (LBL)
- UL305, CAN/ULC-S132, UL 10C, BHMA A156.03.2014



## Specialized devices



Series 99 shown

### EL and QEL Electrical Latch retraction option

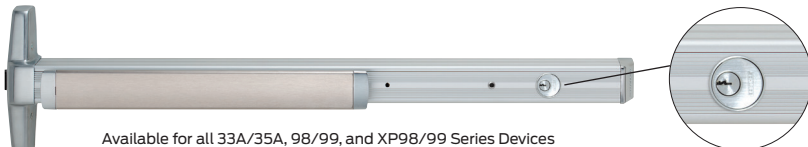
Exit device latches can be held open for continuous free access or electronic access for individual entrance through an access control system. The option can also be used with fire exit doors when tied into the emergency fire alarm system. Standard EL operates using a continuous-duty solenoid for demanding use. The QEL (Quiet Electric Latch Retraction) reduces operational noise down to a whisper and is ideal for hospitals, museums, libraries, theaters and other applications where quieter operation is needed.

Use with PS914 (EL) and PS902 (QEL) power supplies.

### Chexit® Delayed and controlled egress



For delayed and controlled egress applications, the Chexit device triggers an audible alarm when the touchbar is pushed and holds the door secure for 15 seconds before releasing. The device can be tied into a fire alarm for immediate release in an emergency.



Available for all 33A/35A, 98/99, and XP98/99 Series Devices

Key switch to arm, disarm or reset. Flashing indicator displays status.



### WS Tornado/Hurricane option for 9827/9927 surface vertical rod device

The WS option has been designed and tested to comply with ICC 500 Standard for the Design and Construction of Storm Shelters, and the Federal Emergency Management Agency's publication FEMA 361 – Design and Construction Guidance for Community Safe Rooms.

Series 98 shown

UL listed with the Steelcraft Paladin door for Tornado Listings and the Steelcraft H Series door for Hurricane Listings.



# Crossbar exit devices

## 55 Series exit devices

### Narrow stile crossbar design

55 Series exit devices capture the aesthetic beauty of the best-looking exit devices on the market. They feature a traditional crossbar design with a popular streamlined appearance. Available in rim (panic only), mortise and concealed vertical rod mountings.

- Devices are UL/cUL Listed panic hardware (FVSR) SA163
- Fire devices (F) are UL/cUL Listed fire exit hardware (GXHX) R4504, 3-hour
- Finishes include US3, US4, US10, US10B, US26, US26D and SPBLK



## 88 Series exit devices

### Traditional crossbar design

88 Series exit devices incorporate a traditional crossbar design with proven service on rugged applications. Available in rim, mortise, surface and concealed vertical rod mountings. For all types of flush and wide stile doors, and fits 86 and 161 stock hollow metal cutouts.

- Devices are UL/cUL Listed panic hardware (FVSR) SA163
- Fire devices (F) are UL/cUL Listed fire exit hardware (GXHX) R4504, 3-hour
- Tested in accordance to ANSI A156.3, Grade 1 8827 and 8847 - Grade 1 to A156.3-2014
- Finishes include US3, US4, US10, US10B, US26, US26D and SPBLK



# INPACT® 94/95 Series

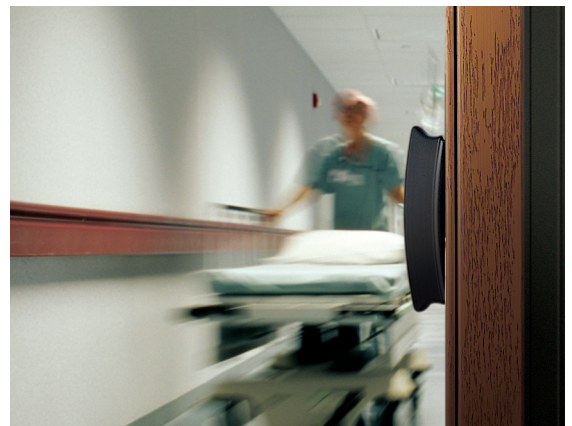
## INPACT® Low-profile recessed door

All INPACT exit devices are as durable as they are beautiful. The heavy-duty construction, simple mechanical design and Von Duprin's legendary commitment to quality combine to ensure a long, trouble-free service life.

- Devices are UL/cUL Listed panic hardware (FVSR) SA163
- Fire devices (F) are UL/cUL Listed fire exit hardware (GXHX) R4504, 3-hour
- Tested in accordance to ANSI A156.3, Grade 1
- Finishes: US3, US4, US10, US26, US26D, US28 and 313, 94/9547 and 94/9547-LBR - Grade 1 to A156.3-2014 with roller strike



94 Series exit device shown. Series 95 exit devices feature a grooved surface. Available in concealed vertical rod and mortise lock mountings.



Recessed in the door, INPACT maintains a low-profile with sloped end caps that deflect objects away from the door and are closer to being totally flush with the door when depressed. Ideal for use in healthcare facilities, universities and other high-profile buildings.



= Helps meet LEED certification



= Complies with ADA



= Antimicrobial Coating Available



= Conforms to NFPA 101



= UL and/or cUL Listed



= ANSI tested



## Door controls



### Products

**Surface-mounted closers**

**Concealed closers**

**Wall magnets**

**Automatic operators**

**Actuators and accessories**

Since 1876 LCN has been the undisputed innovator and leader in the door control category. LCN products include surface and concealed door closers, ADA compliant automatic door operators and electronic accessories that protect the opening and enhance the overall safety and security of a facility. These devices are found in high traffic areas such as hospitals, schools, government buildings, and commercial settings. LCN sets the standard for exceptional performance in door control at life's critical moments.

## LCN on the outside, means quality on the inside

### Welcome to superior performance

The doors that welcome customers, students, patrons and visitors are crucial aspects of the overall facility experience. High traffic zones, wherever they are in a building, rely on consistent and reliable door performance in the face of high use and abuse. If they fail, there are significant costs, from damaged goodwill to dangerous conditions.

### The heart of the opening

At the heart of an opening is the door closer. It not only protects the integrity of the opening, but also the safety and security of its users. It is the mechanical pulse of the facility, and maintaining closer performance in the face of high use and abuse is a constant concern of facility managers and owners.

### LCN: The leader in door control

High traffic environments are where LCN's portfolio of heavy-duty closers is setting the standard for exceptional performance. Not surprisingly, it all begins with what goes into them: premium materials that are engineered and manufactured to obsessively tight tolerances. What's more, LCN closers utilize several patented components and are assembled in the United States.

### The no-compromise zone

In openings that are subject to high use and abuse, LCN door closers enhance security by ensuring doors latch and provide fire and life safety by adhering to stringent building codes.

### LCN stands for:

- Reliable performance
- Greatest value for ownership
- Protection for the entire opening
- Security and safety
- Better facility experience
- Unmatched service and support

# The LCN formula for success

From design to materials and manufacturing, LCN successfully integrates all the elements needed to deliver exceptional products that meet your every need.



4050 shown

## Cast iron cylinders

- Heavy duty cast iron surpasses all other cylinder material for strength and reliability
- Superior burst and yield strength adds durability



1460 shown

## Cast aluminum closers

- Alternative, high-quality, cost effective solutions
- Easy aftermarket replacement with the most common hole patterns in the industry



## Fast power adjust dial

- Patented visual indicator allows spring power adjustments
- Dial turns easily to quickly and accurately set size



4040XP shown

## Surface-mounted closers

The most durable heavy-duty door closer provides unmatched reliability. With increased load-bearing capacity, these closures offer long-lasting performance in heavily used and high-abuse conditions. A heavy-duty EDA arm comes standard with this closer, as well as the strongest 3/4" pinion and widest bearing available.



4630 shown

## Automatic operators

Electrically powered, low-energy automatic operator. It provides easy access for people who may need additional assistance. A Digital Control Suite with on-board diagnostics ensures trouble-free installation and operation. Available surface mounted or concealed in various finishes.



4810 shown

Pneumatically powered multi-door solution. This low-energy, quiet operating, automatic operator provides easy access for people who may need additional assistance.



2010 Shown

## Concealed closers

Designed for high-traffic applications in hollow metal, aluminum or wood doors and frames. The double-lever arm version provides superior door control, and a choice of finishes, cylinder functions and arm functions meet virtually all architectural requirements.



SEM7830 Shown

## Wall magnets

Electrically controlled door-holding magnets ensure a fail-safe hold until the current is interrupted. They are available in a variety of voltages and powder coat finishes.



8310-854 shown 8310-856 shown

## Actuators and accessories

LCN offers a full line of actuators and accessories to meet almost any of your accessibility needs. All accessories are universal and can be used with any LCN automatic operator.



**GLYNN-JOHNSON**

Door control  
hardware



## Products

### Overhead door holders/stops

Known throughout the industry as the “overhead door holder specialist,” Glynn-Johnson has made its name with state-of-the-art manufacturing and technology. Delivering both superior quality and exceptional performance, Glynn-Johnson products are offered in a wide variety of popular finishes and configurations providing the flexibility needed to meet the most demanding door control applications.



Refer to page 30 for available finishes.



**IVES**

Door hardware  
accessories



## Products

**Architectural hinges**

**Continuous hinges**

**Pivots**

**Flush bolts**

**Coordinators**

**Door trim and pulls**

**Door protection plates**

**Stops**

For more than 120 years Ives has produced a full line of premium quality building hardware and accessories that delivers application flexibility and superior value. The expansive portfolio includes hinges, pivots, flush bolts, strikes, door trim, pulls, protection plates, lock guards and many other hardware accessories. As the leader in door accessory hardware, Ives provides premium quality products that are tough, durable and attractive. Available in a full complement of architectural finishes, Ives accessories coordinate seamlessly for a complete, secure, attractive door solution.



= Complies with ADA



= Antimicrobial Coating Available



= Conforms to NFPA 101



= UL and/or cUL Listed



= ANSI tested

Refer to page 30 for available finishes.





## Premium sealing systems

### Products

**Thresholds**

**Automatic door bottoms door sweeps**

**Head and jam protection weather stripping**

**Sound control solutions**

**Fire and smoke control solutions**

Allegion's Zero International perimeter seals and thresholds are engineered for durability and reliable performance. Our sealing products also support green building applications by promoting heating and cooling efficiency. The comprehensive Zero product line includes advanced sound-control gasketing and a full array of other specialized sealing systems for doors and windows, as well as intumescent fire and smoke protection systems.



= Complies with ADA



= Conforms to NFPA 101



= UL and/or cUL Listed



= ANSI tested

Refer to page 30 for available finishes.

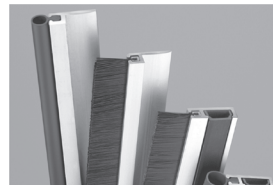


### Automatic door bottom



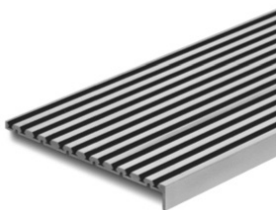
Automatic door bottoms don't have to mean installation headaches or maintenance nightmares. Engineered and tested for easy, precise installation, with a minimum of parts subject to wear.

### Head and jamb protection



Zero door gaskets for protecting head, jamb, sill, and meeting stiles are engineered for reliable performance in demanding environments. Constructed from top-quality materials, they are also durable and built to last. We offer an unequalled range of capabilities, features and aesthetic options, including specialized designs for optimal functionality.

### Thresholds



Traction Tread™ Provides detectable warning for stairs and ramps. ZERO's top-quality materials and construction are designed to stand up to the demands of heavy traffic as well as temperature extremes.



**FALCON**<sup>®</sup>

## Door hardware

### **Products**

**Locks and keying options**

**Exit devices**

**Closers**

**Automatic operators**

**Low-energy automatic operators**



### **Falcon is solid**

Regardless of the job, Falcon delivers reliable performance and great looks at an affordable price. Falcon products are ideal for all applications and architectural needs.

Falcon door hardware delivers durability, convenience and unmatched value. Falcon products include locks, cylinders, key systems, exit devices, closers and accessories providing quality products at a reasonable price. Delivering reliable performance, Falcon makes it simple—cost effective products that meet or exceed life safety and building code requirements.





### Locks and keying options



Falcon offers a full range of lock types including cylindrical, mortise, interconnect and unit locks with the most popular lever designs for the flexibility you need and the performance you demand.

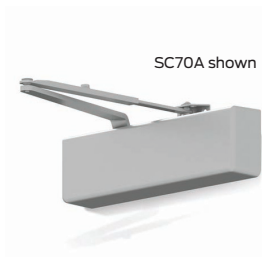
### Exit devices



Falcon exit devices stand up to the use and abuse of banks, assisted living facilities and retail stores.

### Closers

Falcon designs closers to fit a variety of commercial applications and provides an identical footprint for retrofit (in most cases).



### Low-energy automatic operators



The most cost-effective solution for automating your entrances. Designed specifically for the commercial market, the Falcon operator is ideal for assisted living communities, low-traffic store front entrances, or automating interior doors for added assistance. When used manually, this operator acts like a regular manual door closer.

## Finishes

We know how important the final finish is to any project. That's why we offer a complement of matching architectural finishes for our products. Whether you need contemporary, traditional, innovative or creative, we can deliver. Optional powder coat colors to complement special installation can be available, consult your local representative.

Color		US number	BHMA number
	Brass, bright	US3	605
	Brass, satin	US4	606
	Brass, satin, blackened, satin relieved	US5	609
	Bronze, satin	US10	612
	Bronze, dark	US10B	613
	Aged bronze (716)	US11	643e
	Nickel, satin	US15	619
	Black, matte	US19	622
	Chrome, bright	US26	625
	Chrome, bright	US26D	626
	Aluminium	US28	628
	Stainless steel, bright	US32	629
	Stainless steel, satin	US32D	630
	Black, anodized	US315AN	711

Not all finishes are standard across all brands.



You have a vision for every building you design,

we help make your vision a reality.



With over 100 hardware consultants located across the nation, we offer a wide range of experience with electronic and mechanical hardware, as well as doors and frames. Let us help you with:

- A complete hardware specification
- Product substitution requests
- Hardware submittals
- AIA-certified training
- Building code compliance
- Site reviews and installation inspections
- Specifications for Division 08

Learn more at: [www.allegion.com/us](http://www.allegion.com/us)

KRYPTONITE ■ LCN ■ **SCHLAGE** ■ STEELCRAFT ■ VON DUPRIN



**ALLEGION**™

PIONEERING SAFETY™

## About Allegion

Allegion (NYSE: ALLE) is a global pioneer in safety and security, with leading brands like CISA®, Interflex®, LCN®, Schlage®, SimonsVoss® and Von Duprin®. Focusing on security around the door and adjacent areas, Allegion produces a range of solutions for homes, businesses, schools and other institutions. Allegion is a \$2 billion company, with products sold in almost 130 countries.

For more, visit [www.allegion.com](http://www.allegion.com)

KRYPTONITE ■ LCN ■  ■ STEELCRAFT ■ VON DUPRIN